

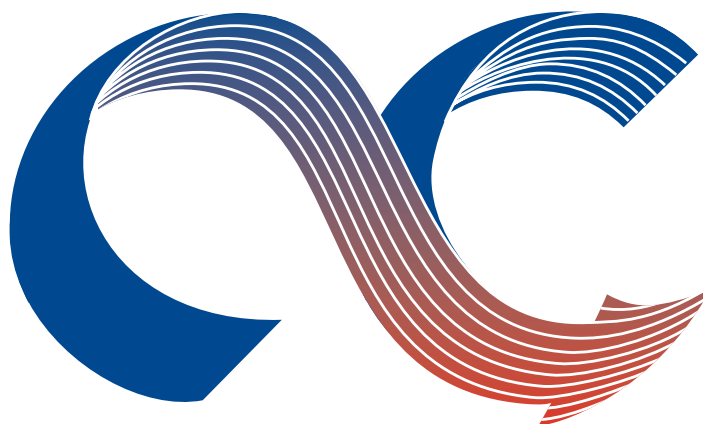
Style W-2

QUICKAIRE

Fan Coil Units

Horizontal & Vertical

COIL COMPANY



HEAT EXCHANGE • AIR HANDLING



440



P.O. Box 956
Paoli, PA 19301
(800) 523-7590
FAX (610) 251-0805
www.coilcompany.com

YOU HAVE A DIRECT LINE TO US!

QUICKAIRE Fan/Coil Units

Coil Company stocks 15 sizes of Horizontal and Vertical Direct Drive Fan/Coils in both Chilled Water and DX.

When it comes to building Fan/Coil Units for any application Coil Company has the capability to meet your requirements. We build units for almost any commercial application that you might run across. You need a unit next week and certainly can't wait 8 to 10 weeks for two or three small Fan/Coil units. Or maybe you have a cooling or heating emergency, or maybe the job just has to be completed by a certain time. In any case, you can't obtain the units that are required in a reasonable amount of time. Well now you can!

Coil Company is responsive to small jobs

In an industry that treats Fan/Coil units as second class equipment, Coil Company builds quality Fan/Coil units, and that's 'saying something'! While

everybody seems concerned with chillers, compressors, central station air handlers and major equipment on major jobs, Coil Company can meet your needs on small jobs or the large number of Fan/Coil units on large jobs. And quality is equally important at Coil Company so you can meet the most rugged conditions.

Our units are individually factory tested and inspected to insure the highest quality in the industry.

Coil Company also offers several features with all our units that really distinguish us from other units – top or bottom access to filter and blowers, heat pumps ready for DX units, high static pressure and other features that give you a more complete installation. Look to Coil Company for all your Fan/Coil needs.



P.O. Box 956
Paoli, PA 19301
(800) 251-0257
FAX (610) 251-0805
www.coilcompany.com

TABLE OF CONTENTS

Section	Description	Page No.
Horizontal Standard Performance Fan Coils	Description, Features & Nomenclature	4-5
	Performance Data	6-10
	Dimensional Drawings	11-20
	Weights & Measures	21
	Guide Specifications	22-23
Horizontal High Performance Fan Coils	Description, Features & Nomenclature	24-25
	Performance Data	26-27
	Dimensional Drawings	28-36
	Weights & Measures	37
Vertical & Low Profile Fan Coils	Description, Features & Nomenclature	38-39
	Performance Data	40-44
	Dimensional Drawings	45-50
	Weights & Measures	51-52
	Guide Specifications	53-54
Warranty	Coil Company Warranty Information	55

TERMS AND CONDITIONS

Coil Company, LLC reserves the right to change dimensional, construction, performance or any other criteria shown in this publication without notice to its customers.

Acceptance of orders. Purchase orders are subject to acceptance and approval by Coil Company, LLC (seller). No Terms or Conditions appearing on purchase orders of other related documents that are contrary to our Standard Terms and Conditions shall be binding unless specifically agreed to beforehand by the Seller in writing.

Cancellation of orders. The Purchaser can cancel or modify an order upon written notice and Purchaser shall pay all costs (cancellation or modification) and charges as determined in an equitable way by seller.

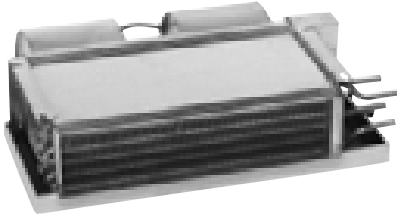
Quotations. Any quotation in writing by Coil Company, LLC may or may not include freight charges within the quoted price(s). Regardless, all equipment is sent F.O.B. Factory and it is the Purchaser's responsibility to make claim for loss or damage with transportation (delivering) carrier.



P.O. Box 956
 Paoli, PA 19301
 (800) 251-0257
 FAX (610) 251-0805
www.coilcompany.com

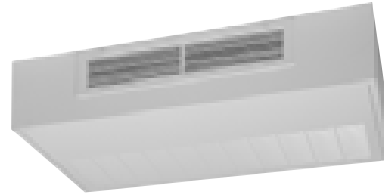
HORIZONTAL FAN COILS

Horizontal Fan Coils from Coil Company



Basic Horizontal
200 Thru 1200 CFM

Basic Horizontal Model with its low profile design is ideal for multiple applications. The slim, compact design is well suited for drop-ceiling closet, hallway and other concealed applications. The horizontal Basic comes with a powder-coated epoxy drain pan and a wide range of coil, motor and controls options. These models have no exterior cabinet.



Deluxe Horizontal
200 Thru 1200 CFM

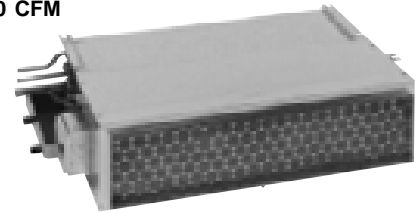
Deluxe Horizontal Model is designed for horizontal, exposed ceiling mounting. This model is a basic unit installed in a fully-cased cabinet for “free-blow” exposed ceiling mounting. Unit is ideal for remodel situations where the addition of air conditioning ductwork is limited. Deluxe Cabinets are constructed of cold-rolled steel, phosphate conversion coated and finished with a 385° baked-on tough, soft-white epoxy powder-coated finish.



Horizontal Flush
200 Thru 1200 CFM

Horizontal Flush is a recessed unit for flush ceiling applications. The unit is designed to accommodate ducted supply air. The telescoping frame and hinged access panel give it the flexibility to accommodate any type of ceiling.

Horizontal Rear Return-Air Plenum
200 Thru 1200 CFM



Horizontal Rear Return-Air Plenum is our Basic Model with a galvanized rear return-air plenum. This unit is effective for mounting above ceilings, in closets, hallways or bathroom areas. The plenum conceals the unit's blower motor, which is easily accessible for service by removing the bottom panel. Available as a rear return or bottom return.

HORIZONTAL FAN COILS

Horizontal Units shipped with the Features and Options you want.

HORIZONTAL FAN COIL FEATURES

Coils – 1/2" OD copper tube with aluminum fins (12 FPI) equipped with manual-air vent. DX and steam coils do not include manual-air vent. Coils are 100% underwater pressure tested at 350 PSI with a 300 PSI working pressure.

Cabinet – Heavy-gauge galvanized steel with neoprene coated 1/2" thick fiberglass insulation with 3.35 PCF density.

Drain Pan – Galvanized and powder coated epoxy with a 1/4" thick closed-cell insulation and has primary and secondary drain connections.

Motors – Three-speed, 115V/1/60, 208/1/50-60 or 277/1/60 PSC motor with quick-connect plug.

Controls – Controls and motors are factory-wired and terminated in a junction box for single-point power supply.

Air Openings – One-inch reinforced collar on return and supply-air openings. Swing-down, hinged return air grille/access door on deluxe and flush models. Deluxe Unit has single-deflection supply-air grille.

Filter – One-inch fiberglass, throwaway filter except Horizontal Basic Unit

Added Features – Protective cardboard covers openings during shipment and construction. Each unit is tagged and crated as scheduled for installation.

Certification – UL and cUL approved, ARI certified and 100% factory tested.

OPTIONAL FEATURES FOR 'BEST IN THE INDUSTRY' FAN/COILS.

Cabinet – Soft-white, powder-coated epoxy cabinet. Deluxe, Flush and Custom Colors

Drain Pans – Stainless steel, porcelain and double-wall.

Coils – Copper fins, phenolic coated, stainless-steel end plates. All options are available on one to six rows.

Insulation – fiberglass, foil-faced, elastomeric and double-wall (solid or perforated) in 1/2" and 1" thickness.

Systems – Two or Four-pipe, Hydronic cooling/heating, Steam, Direct-expansion (DX) and/or Electric Heat.

Grilles – Double deflection and custom colors.

Controls – Unlimited selection of factory-mounted valves and controls.

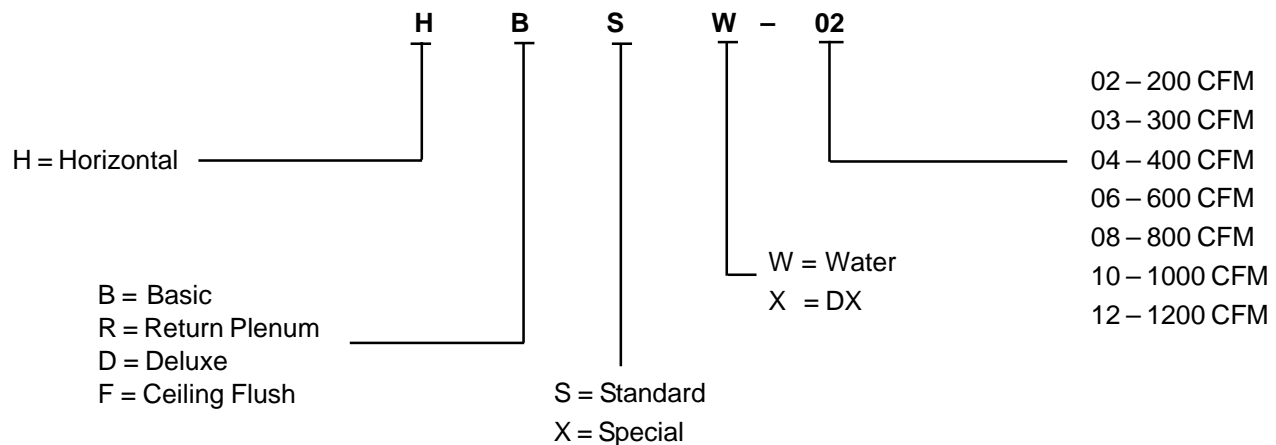
Filters – Two-inch thick throwaway (except Deluxe and Flush), washable and metallic.

Flow-Control Pump – For water heating applications.

Electric Strip Heat – From 1 to 5 kW

Miscellaneous – Ultraviolet Lights

HORIZONTAL FAN COIL NOMENCLATURE



HORIZONTAL FAN COILS

ARI CERTIFIED COOLING CAPACITY

Coil Company Horizontal Fan Coils have been rated in accordance with ARI Standard 440-2005 for room fan-coils air-conditioners and are certified by the Air-Conditioning and Refrigeration Institute to meet the following product performance ratings:

tioning and Refrigeration Institute to meet the following product performance ratings:

ARI APPROVED STANDARD RATINGS						COOLING CAPACITY		POWER INPUT (WATTS)
MODEL / SIZE	MOTOR / TYPE	STYLE	RATED CFM	GPM	WPD (FT./H ₂ O)	TOTAL COOLING (BTUH)	SENSIBLE COOLING (BTUH)	
02	STANDARD	BASIC	260	1.1	0.5	5530	5,040	106
		RETURN PLENUM	240	1.0	0.5	5240	4,720	102
		DELUXE, FLUSH	200	0.9	0.4	4650	4,080	98
03	STANDARD	BASIC	340	1.3	0.7	6680	6,240	113
		RETURN PLENUM	310	1.3	0.6	6250	5,800	105
		DELUXE, FLUSH	275	1.1	0.6	5750	5,280	104
	HIGH STATIC	BASIC	340	1.3	1.1	6680	6,240	118
		RETURN PLENUM	320	1.3	1.0	6390	5,950	106
		DELUXE, FLUSH	290	1.2	0.9	5960	5,510	101
04	STANDARD	BASIC	420	2.0	1.3	9920	8,530	148
		RETURN PLENUM	410	2.0	1.3	9760	8,370	141
		DELUXE, FLUSH	380	1.9	1.2	9280	7,900	134
	HIGH STATIC	BASIC	515	2.3	1.6	11,470	10,300	178
		RETURN PLENUM	480	2.2	1.5	10,900	9,480	174
		DELUXE, FLUSH	455	2.1	1.4	10,500	9,080	172
06	STANDARD	BASIC	650	3.3	3.1	16,510	12,070	182
		RETURN PLENUM	580	3.0	2.7	15,200	11,820	173
		DELUXE, FLUSH	510	2.8	2.3	13,890	11,560	148
	HIGH STATIC	BASIC	665	3.4	3.2	16,790	14,340	216
		RETURN PLENUM	630	3.2	3.0	16,140	13,720	210
		DELUXE, FLUSH	590	3.1	2.7	15,390	13,000	208
08	STANDARD	BASIC	900	4.5	2.2	22,640	19,350	273
		RETURN PLENUM	870	4.1	2.1	22,130	18,440	258
		DELUXE, FLUSH	830	4.3	2.0	21,450	18,160	227
	HIGH STATIC	BASIC	915	4.6	6.6	22,900	19,610	388
		RETURN PLENUM	880	4.5	6.3	22,300	19,010	376
		DELUXE, FLUSH	840	4.3	6.0	21,620	18,330	366
10	STANDARD	BASIC	1,040	5.6	3.4	28,130	23,220	281
		RETURN PLENUM	1,010	5.5	3.3	27,610	22,700	273
		DELUXE, FLUSH	980	5.4	3.2	27,070	22,170	248
	HIGH STATIC	BASIC	1,080	5.8	3.5	28,830	23,910	475
		RETURN PLENUM	1,030	5.6	3.3	27,960	23,050	467
		DELUXE, FLUSH	1,000	5.5	3.2	27,430	22,530	456
12	STANDARD	BASIC	1,240	7.0	5.1	35,210	26,350	313
		RETURN PLENUM	1,200	6.9	5.0	34,500	27,650	297
		DELUXE, FLUSH	1,140	6.7	4.7	33,390	26,580	286
	HIGH STATIC	BASIC	1,255	7.1	5.2	35,480	28,610	476
		RETURN PLENUM	1,150	6.7	4.8	33,600	26,770	470
		DELUXE, FLUSH	1,100	6.5	4.5	32,520	25,790	460

Notes: 1) Based on 80°F DB and 67°F WB EAT, 10°F temperature rise, high fan speed. Motor voltage 115/1/60 power source. Air flow under dry coil conditions. Water pressure drops shown in feet of water.

All units are listed under UL Category Control No. LZFE.

2) Ratings are based on actual CFM. Standard coils for 02-04 is 3 rows and 06-12 is 4 rows.

HORIZONTAL FAN COILS

HEATING PERFORMANCE

HEATING PERFORMANCE						
MODEL / SIZE	MOTOR / TYPE	COIL ROWS / (FPI)	RATED CFM	MBH	GPM	WPD (FT. / H ₂ O)
02	STANDARD	1 ROW (12)	245	9.2	0.5	0.3
		2 ROWS (12)	245	16.4	0.8	1.2
03	STANDARD	1 ROW (12)	365	11.5	0.6	0.4
		2 ROWS (12)	365	21.6	1.1	1.7
	HIGH STATIC	1 ROW (12)	320	10.8	0.5	0.3
		2 ROWS (12)	320	19.8	1	1.5
04	STANDARD	1 ROW (12)	435	15.4	0.8	0.6
		2 ROWS (12)	435	27.5	1.4	2.7
	HIGH STATIC	1 ROW (12)	480	16.2	0.8	0.7
		2 ROWS (12)	480	29.3	1.5	3.0
06	STANDARD	1 ROW (12)	710	23.5	1.2	1.2
		2 ROWS (12)	710	38.9	1.9	1.0
	HIGH STATIC	1 ROW (12)	630	22.0	1.1	1.1
		2 ROWS (12)	630	38.9	1.9	5.1
08	STANDARD	1 ROW (12)	925	29.8	1.5	2.0
		2 ROWS (12)	925	49.6	2.5	1.6
	HIGH STATIC	1 ROW (12)	870	28.9	1.4	1.9
		2 ROWS (12)	870	47.8	2.4	1.5
10	STANDARD	1 ROW (12)	1080	36.1	1.8	3.0
		2 ROWS (12)	1080	59.6	3.0	2.3
	HIGH STATIC	1 ROW (12)	1030	35.3	1.8	2.9
		2 ROWS (12)	1030	57.9	2.9	2.2
12	STANDARD	1 ROW (12)	1290	43.7	2.2	4.4
		2 ROWS (12)	1290	71.7	3.6	3.3
	HIGH STATIC	1 ROW (12)	1230	42.6	2.1	4.3
		2 ROWS (12)	1230	69.7	3.5	3.2

Notes: Based on 70°F DB EAT, 180°F EWT, 40°F temperature rise, high fan speed. Motor voltage 115/1/60 power source. Air flow under dry coil conditions. Water pressure drops shown in feet of water.

HORIZONTAL FAN COILS

COIL DATA

Coils are made from 1/2" O.D. copper tubing with .017" wall thickness, and tubes are staggered for maximum heat transfer. A manual air vent is standard on all hydronic coils. DX and steam coils do not include manual-air vent. All coils are 100% underwater pressure tested to 350 PSIG with a 300 PSIG working pressure.

Steam coils are rated for up to 15 PSIG or 250°F.

Coils are available in two-pipe or four-pipe, and from one-row to six-row configurations for Standard and Hi-Static models with any combination of chilled or hot water, steam or direct expansion. Custom circuiting is available.

COIL ROWS	02	03	04	06	08	10	12
SINGLE-ROW COIL	STANDARD						
TWO-ROW COIL							
THREE-ROW COIL							
FOUR-ROW COIL	OPTIONAL						
FIVE-ROW COIL							
*SIX-ROW COIL							

*Note: Five-row maximum when selecting a DX coil with a hot water coil.

Coil Options:

- DX - Includes distributor and nozzle, TXV must be field furnished and installed
- Steam - 1-15 PSIG
- Opposite End Connection (E). Place the "E" - pipe-hand connection in the eleventh digit of the model number - when ordering.
- Preheat Coil Position (PREHEAT) - Standard coil is reheat position
- Phenolic Anti-Corrosion Coating (PAC)
- Stainless Steel Tubes/Fins/End Plates
- Copper Fins/Tubes/End Plates
- 6-16 Fins Per Inch (Standard is 12 FPI)

Coil connections on the chilled water side for models 02-06 is 1/2" and 3/4" on models 08-12. The hot water connection is 1/2" on models 02-12.

ELECTRIC HEAT

Electric heat may be furnished with either hydronic, direct expansion or steam coils and is factory-mounted, wired and tested. Option-equipped with low-watt density

(for long life) nichrome wire elements. The heater has a built-in, high limit, and fusible link to provide maximum safety.

MODEL / SIZE	kW	0.5	1.0	1.5	2.0	2.5	3.0	3.5	4.0	4.5	5.0
	VOLTAGE	AMPS									
02 (LOW STATIC ONLY)	115	4.4	8.7	13.0	17.4						
	208	2.4	4.8	7.2	9.6	12.0					
	230	2.2	4.4	6.5	8.7	10.9					
	277	1.8	3.6	5.4	7.2	9.0					
03	115	4.4	8.7	13.0	17.4	21.7					
	208	2.4	4.8	7.2	9.6	12.0					
	230	2.2	4.4	6.5	8.7	10.9					
	277	1.8	3.6	5.4	7.2	9.0					
04	115	4.4	8.7	13.0	17.4	21.7	26.1				
	208	2.4	4.8	7.2	9.6	12.0	14.4	16.8	19.2	21.6	24.0
	230	2.2	4.4	6.5	8.7	10.9	13.0	15.2	17.4	19.6	21.7
	277	1.8	3.6	5.4	7.2	9.0	10.8	12.6	12.6	16.3	18.1
06	115	4.4	8.7	13.0	17.4	21.7	26.1				
	208	2.4	4.8	7.2	9.6	12.0	14.4	16.8	19.2	21.6	24.0
	230	2.2	4.4	6.5	8.7	10.9	13.0	15.2	17.4	19.6	21.7
	277	1.8	3.6	5.4	7.2	9.0	10.8	12.6	12.6	16.3	18.1
08	115	4.4	8.7	13.0	17.4	21.7	26.1				
	208	2.4	4.8	7.2	9.6	12.0	14.4	16.8	19.2	21.6	24.0
	230	2.2	4.4	6.5	8.7	10.9	13.0	15.2	17.4	19.6	21.7
	277	1.8	3.6	5.4	7.2	9.0	10.8	12.6	12.6	16.3	18.1
10	115	4.4	8.7	13.0	17.4	21.7	26.1				
	208	2.4	4.8	7.2	9.6	12.0	14.4	16.8	19.2	21.6	24.0
	230	2.2	4.4	6.5	8.7	10.9	13.0	15.2	17.4	19.6	21.7
	277	1.8	3.6	5.4	7.2	9.0	10.8	12.6	12.6	16.3	18.1
12	115	4.4	8.7	13.0	17.4	21.7	26.1				
	208	2.4	4.8	7.2	9.6	12.0	14.4	16.8	19.2	21.6	24.0
	230	2.2	4.4	6.5	8.7	10.9	13.0	15.2	17.4	19.6	21.7
	277	1.8	3.6	5.4	7.2	9.0	10.8	12.6	12.6	16.3	18.1

HORIZONTAL FAN COILS

AIR FLOW DATA

Air flow shown below is under dry coil conditions.

AIR FLOW DATA			EXTERNAL STATIC PRESSURE																	
SIZE	MODEL STYLE	COIL ROWS	0.00			0.05			0.10			0.15			0.20			0.25		
			HI	MED	LOW	HI	MED	LOW	HI	MED	LOW	HI	MED	LOW	HI	MED	LOW	HI	MED	LOW
02 FREE RETURN	STANDARD	3-ROW	255	230	175	242	218	163	223	200	148	200	177	130	170	150	106	140	115	79
		4-ROW	245	220	165	232	208	153	213	190	138	190	167	120	160	140	96	130	105	69
02 W/PLENUM	STANDARD	3-ROW	255	230	175	242	218	163	223	200	148	200	177	130	170	150	106	140	115	79
		4-ROW	245	220	165	232	208	153	213	190	138	190	167	120	160	140	96	130	105	69
03 FREE RETURN	STANDARD	3-ROW	365	305	207	340	285	189	310	262	165	275	235	138	235	200	110	180	149	80
		4-ROW	355	295	197	330	275	179	300	252	155	265	225	128	225	190	100	170	139	70
03 W/PLENUM	STANDARD	3-ROW	310	255	167	285	235	149	255	212	125	220	185	98	180	150	70	125	99	40
		4-ROW	300	245	157	275	225	139	245	202	115	210	175	88	170	140	60	115	89	30
04 FREE RETURN	STANDARD	3-ROW	460	400	315	440	380	295	414	358	270	389	328	245	360	310	220	338	290	197
		4-ROW	450	390	305	430	370	285	404	348	260	379	318	235	345	300	210	327	280	186
04 W/PLENUM	STANDARD	3-ROW	435	370	285	415	350	265	389	328	240	364	303	215	337	280	190	312	260	190
		4-ROW	425	360	275	405	340	255	379	318	230	354	293	205	329	270	180	303	250	157
06 FREE RETURN	STANDARD	3-ROW	725	525	455	665	495	425	605	463	400	454	425	370	487	395	340	427	356	310
		4-ROW	710	510	440	650	480	410	590	448	385	440	410	355	472	380	325	413	341	295
06 W/PLENUM	STANDARD	3-ROW	695	485	400	635	455	370	575	423	345	515	385	315	457	355	285	389	316	255
		4-ROW	680	470	385	620	440	355	560	408	330	500	370	300	442	340	270	382	301	240
08 FREE RETURN	STANDARD	3-ROW	945	810	700	920	775	670	890	740	638	850	710	599	805	670	560	760	630	518
		4-ROW	925	790	680	900	755	650	870	720	618	830	690	579	785	650	540	740	610	498
08 W/PLENUM	STANDARD	3-ROW	890	745	620	865	710	590	835	675	558	795	645	519	750	605	480	705	565	438
		4-ROW	870	725	600	845	690	570	815	655	538	775	625	499	730	585	460	685	545	418
10 FREE RETURN	STANDARD	3-ROW	1100	940	660	1080	920	645	1050	900	630	1025	880	615	995	860	599	962	830	570
		4-ROW	1080	920	640	1060	900	625	1030	880	610	1005	860	595	975	840	579	942	810	550
10 W/PLENUM	STANDARD	3-ROW	1030	900	630	1010	880	615	980	860	600	955	840	585	925	820	569	892	790	540
		4-ROW	1010	880	610	990	860	595	960	840	580	935	820	565	905	800	549	872	770	520
12 FREE RETURN	STANDARD	3-ROW	1308	1100	940	1260	1060	920	1214	1020	900	1168	979	865	1130	930	830	1092	885	785
		4-ROW	1288	1080	920	1240	1040	900	1194	1000	880	1148	959	845	1110	910	810	1072	865	765
12 W/PLENUM	STANDARD	3-ROW	1208	1020	900	1160	980	880	1114	940	860	1068	899	825	1030	850	790	992	805	745
		4-ROW	1188	1000	880	1140	960	860	1094	920	840	1048	879	805	1010	830	770	972	785	725
03	HI-STATIC	3-ROW	320	310	305	290	285	270	260	250	225	200	190	180	170	155	150	150	135	125
		4-ROW	315	305	300	285	280	265	255	245	220	195	185	175	165	150	145	145	130	120
04	HI-STATIC	3-ROW	480	425	330	455	405	310	430	380	290	410	355	270	390	330	249	370	310	225
		4-ROW	630	500	380	595	484	365	565	468	345	540	450	325	520	430	310	500	400	290
06	HI-STATIC	3-ROW	630	500	380	595	484	365	565	468	345	540	450	325	520	430	310	500	400	290
		4-ROW	620	490	370	585	474	355	555	458	335	530	440	315	510	420	300	490	390	280
08	HI-STATIC	3-ROW	870	800	530	842	775	490	817	750	450	795	725	420	765	700	390	735	670	355
		4-ROW	860	790	520	832	765	480	807	740	440	785	715	410	755	690	380	725	660	355
10	HI-STATIC	3-ROW	1030	920	510	1000	890	480	960	860	445	930	830	415	900	800	380	880	775	350
		4-ROW	1015	905	495	985	875	465	945	845	430	915	815	400	885	785	365	865	760	335
12	HI-STATIC	3-ROW	1120	1010	570	1090	980	540	1060	950	505	1030	915	475	990	880	445	955	845	420
		4-ROW	1105	995	555	1075	965	525	1045	935	490	1015	900	460	975	865	430	940	830	405

Notes: Ratings and capacity tables based on nominal CFM.

HORIZONTAL FAN COILS

MOTOR DATA

Motors are wired to a junction box ready for single-point field connection.

Outstanding motor features:

- Quick-Connect Plug
- Permanent Split Capacitor
- Thermal overload protection
- 1050 RPM for lower operating costs
- Oversized bearings and permanently lubricated and sealed
- 122°F maximum operating temperature rise

- Custom motor mounts designed to reduce noise and eliminate vibration
- Stators are epoxy-dipped for more efficient motor cooling

Optional motors:

- 208V-1Ø-60 motors
- 277V-1Ø-60 motors
- 230/220V-1Ø-60 motors
- 50-Hz motors in specified voltages

60 HERTZ SINGLE-PHASE MOTORS (1100) RPM				VOLTAGE / WATTS							
				115V		208V		230V		277V	
MODEL	MOTOR TYPE	HP (QTY)	BLOWERS	AMPS	WATTS	AMPS	WATTS	AMPS	WATTS	AMPS	WATTS
02	STANDARD	1/20 (1)	1	0.78	98	0.66	98	0.45	98	1.40	98
03	STANDARD	1/20 (1)	1	1.00	104	0.66	104	0.55	104	0.50	104
	HI-STATIC	1/10 (1)	2	1.30	116	0.77	116	0.70	116	0.60	116
04	STANDARD	1/15 (1)	2	1.00	134	0.55	134	0.55	134	0.50	134
	HI-STATIC	1/8 (1)	2	2.00	170	1.21	170	1.10	170	0.84	170
06	STANDARD	1/15 (1)	2	1.20	141	0.55	141	0.65	141	0.60	141
	HI-STATIC	1/8 (1)	2	2.00	201	1.32	201	1.20	201	0.90	201
08	STANDARD	1/4 (1)	2	2.30	215	1.45	215	1.20	215	1.00	215
	HI-STATIC	1/4 (1)	2	3.20	372	1.87	372	1.70	372	1.40	372
10	STANDARD	1/4 (1)	2	2.50	231	1.76	231	1.30	231	1.10	231
	HI-STATIC	1/4 (1)	2	3.80	430	2.18	430	1.98	430	1.60	430
12	STANDARD	1/4 (1)	2	3.00	249	2.10	249	1.60	249	1.30	249
	HI-STATIC	1/4 (1)	2	4.00	450	2.30	450	1.60	450	1.70	450

Notes: Motor full load amps listed refer to NEC amps. Actual motor nameplate amps may vary.

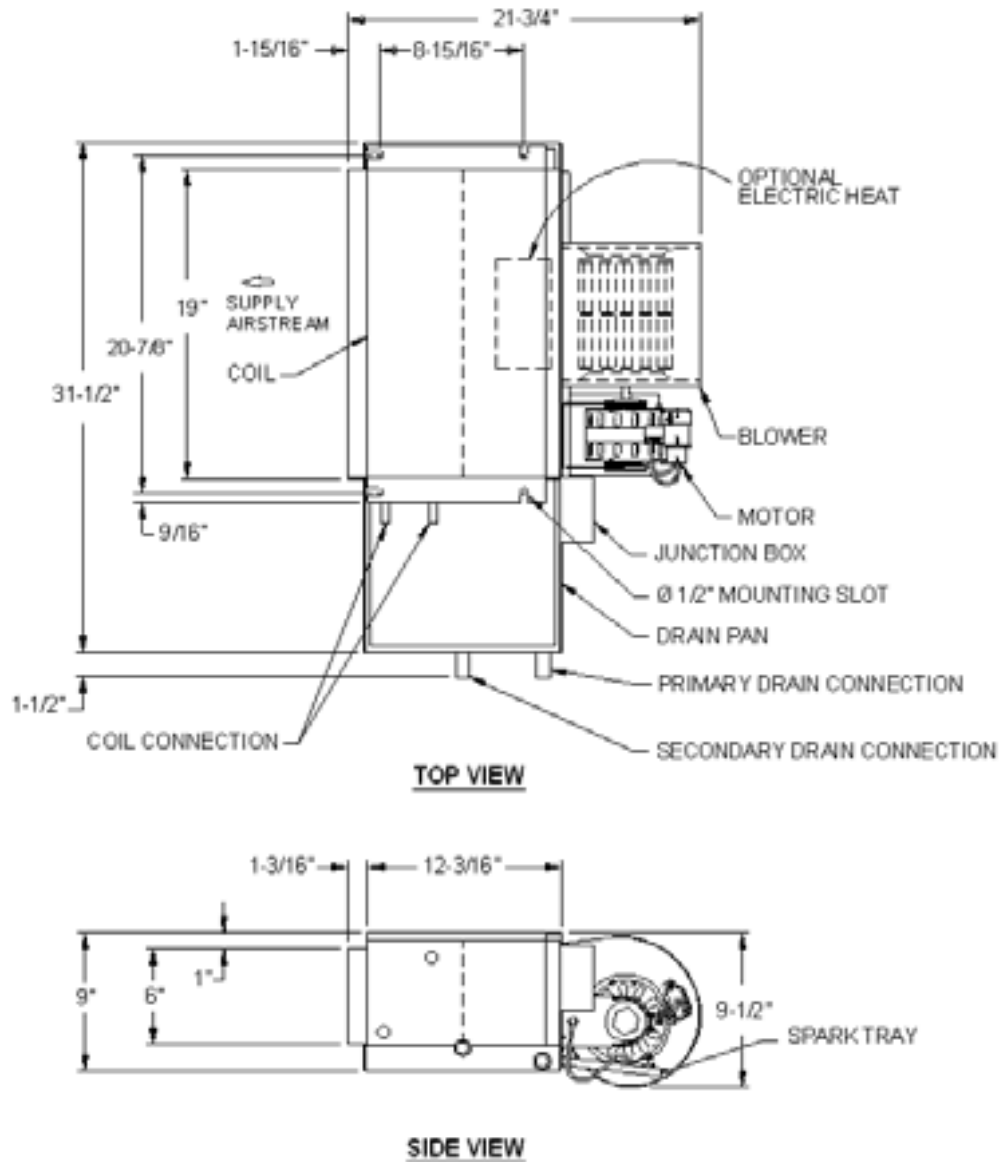
SOUND DATA

MODEL / SIZE	FAN SPEED	OCTAVE BAND						
		2	3	4	5	6	7	8
		CENTER FREQUENCY (CPS)						
		125	250	500	1000	2000	4000	8000
02	HIGH	45.0	45.3	42.0	38.7	31.5	29.5	26.0
	MEDIUM	43.0	44.0	39.5	36.0	29.5	25.0	22.5
	LOW	40.5	41.0	36.5	29.0	24.5	23.0	19.5
03	HIGH	48.0	48.5	46.0	43.0	37.0	32.0	28.0
	MEDIUM	46.0	47.0	44.0	41.0	34.0	29.5	25.5
	LOW	41.0	41.5	38.5	33.5	28.0	26.0	21.5
04	HIGH	50.0	51.0	49.0	45.0	39.0	34.5	29.5
	MEDIUM	48.0	49.5	46.5	42.5	36.5	31.0	27.0
	LOW	42.5	43.0	40.0	36.5	32.3	27.0	23.0
06	HIGH	51.0	52.0	49.5	44.5	38.5	33.0	29.0
	MEDIUM	48.5	50.0	47.0	41.5	37.0	31.5	27.0
	LOW	43.0	44.5	41.0	37.0	31.5	25.0	22.0
08	HIGH	52.0	53.0	47.5	42.5	36.0	31.0	28.0
	MEDIUM	50.5	50.0	46.5	40.0	35.5	29.0	25.0
	LOW	44.5	45.0	41.0	36.5	27.5	25.0	21.0
10	HIGH	51.0	52.5	48.0	42.5	36.5	33.0	29.5
	MEDIUM	49.0	50.0	46.0	42.0	34.0	30.0	26.5
	LOW	43.0	44.0	42.5	35.5	31.5	27.0	23.0
12	HIGH	50.0	51.5	46.0	42.0	36.0	31.5	29.0
	MEDIUM	48.0	49.5	44.0	40.0	33.5	29.0	26.0
	LOW	42.5	43.5	39.0	34.5	29.5	26.0	22.5

- Notes:
- 1) Power levels are in dB RE 10-12 watts.
 - 2) Sound data tested in accordance with ASHRE Standard 68 and ARI Standard 260 and 350.
 - 3) Ratings are based on actual CFM. Standard coils for 02-04 is 3-row and 06-12 is 4 rows.
 - 4) Air Flow under dry coil conditions.

HORIZONTAL BASIC

HORIZONTAL BASIC - STANDARD & HIGH STATIC - 200-300 CFM - HBSW (WATER) & HBSX (DX)

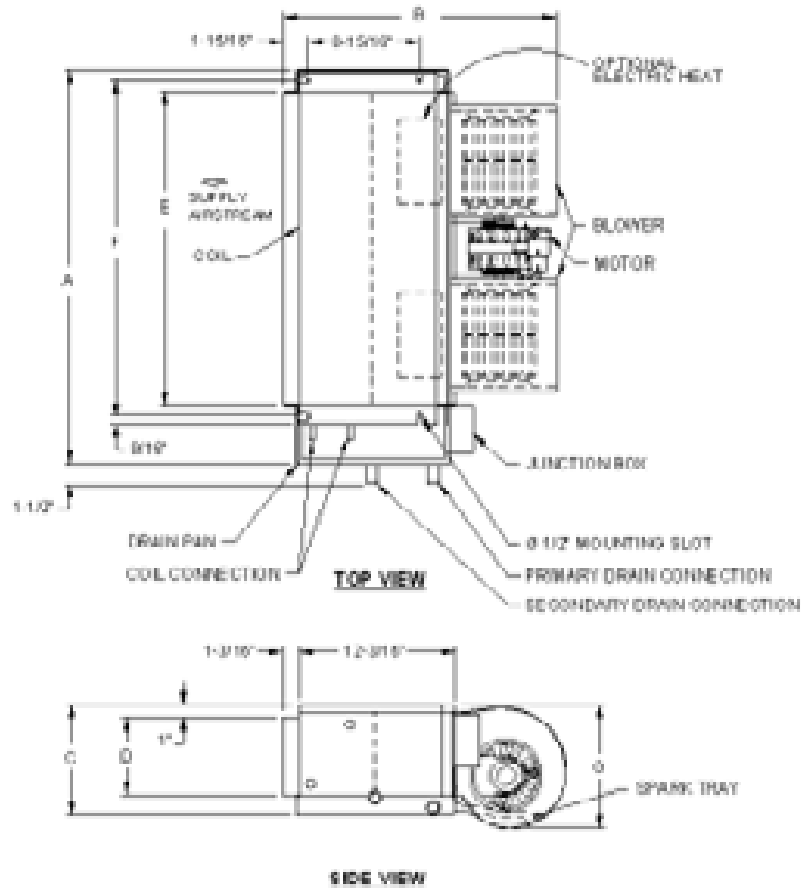


Model 02 and 03

- Right-hand unit shown, left-hand unit opposite.
- Coil connections determined by facing the supply-air opening.
- Electrical junction box is located on the same side as the coil connections.
- Drain pan is powder-coated epoxy with a 1/4" thick closed-cell insulation and has 3/4" NPT primary and secondary drain connections.
- Entire cabinet, scroll and blower wheel are heavy-gauge, galvanized steel.
- Coil connections: 1/2" CW and HW on Models 02 & 03.

HORIZONTAL BASIC

HORIZONTAL BASIC - STANDARD & HIGH STATIC- 400 TO 1200 CFM - HBSW (WATER) - HBSX (DX)



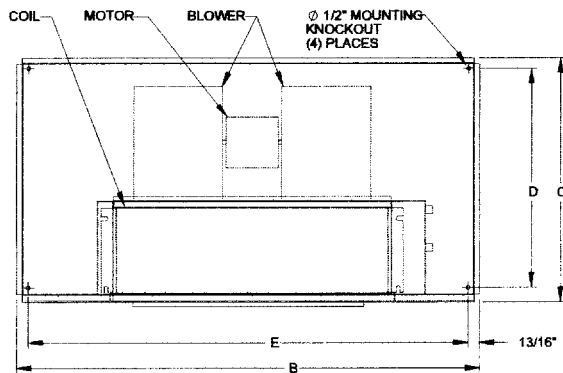
HORIZONTAL BASIC							
MODEL	A	B	C	D	E	F	G
04	31 1/2	21 3/4	9	6	25	26 7/8	9 1/2
06	37 1/2	21 3/4	9	6	31	32 7/8	9 1/2
08	37 1/2	22 1/4	10 3/8	7 1/8	31	32 7/8	10 5/8
10	49 1/2	22 1/4	10 3/8	7 1/8	37	38 7/8	10 5/8
12	49 1/2	22 1/4	10 3/8	7 1/8	43	44 7/8	10 5/8

Models 04 thru 12

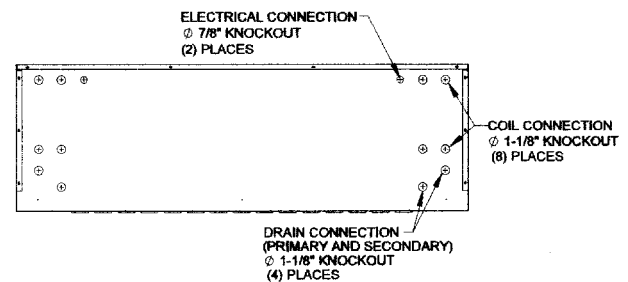
- Right-hand unit shown, left-hand unit opposite.
- Coil connections determined by facing the supply-air opening.
- Electrical junction box is located on the same side as the coil connections.
- Drain pan is powder-coated epoxy with a 1/4" thick closed-cell insulation and has 3/4" NPT primary and secondary drain connections.
- Entire cabinet, scroll and blower wheel are heavy-gauge, galvanized steel.
- Coil connections: 1/2" CW on 04 & 06. 3/4" on 08-12 and 1/2" HW on 04-12

HORIZONTAL DELUXE

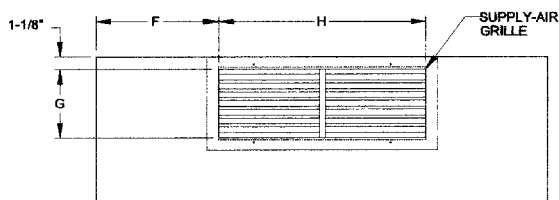
HORIZONTAL DELUXE - STANDARD & HIGH STATIC - 200-300 CFM - HDSW (WATER) - HDSX (DX)



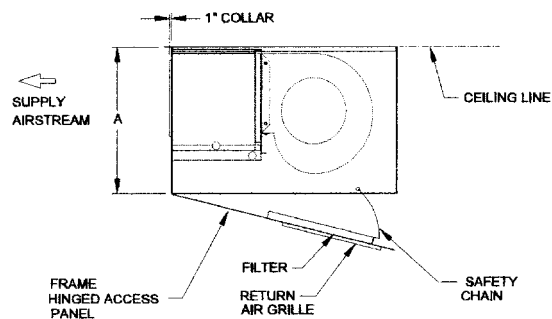
TOP VIEW



REAR VIEW (COIL CONNECTIONS)



FRONT VIEW



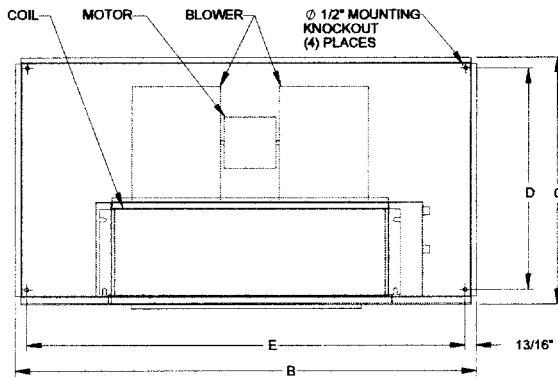
SIDE VIEW

Models 02 & 03

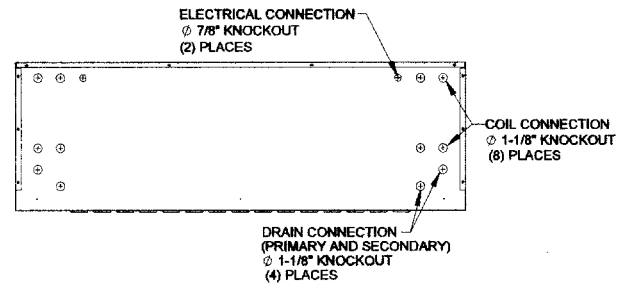
- Right-hand unit shown, left-hand unit opposite.
- Coil connections determined by facing the supply-air opening.
- Electrical junction box is located on the same side as the coil connections.
- Drain pan is powder-coated epoxy with a 1/4" thick closed-cell insulation and has 3/4" NPT primary and secondary drain connections.
- Entire cabinet, scroll and blower wheel are heavy-gauge, galvanized steel.
- Coil connections: 1/2" CW and HW on Models 02 & 03.

HORIZONTAL DELUXE

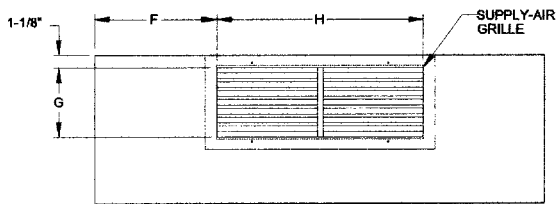
HORIZONTAL DELUXE- STANDARD & HIGH STATIC - 400 TO 1200 CFM - HDSW (WATER) - HDSX (DX)



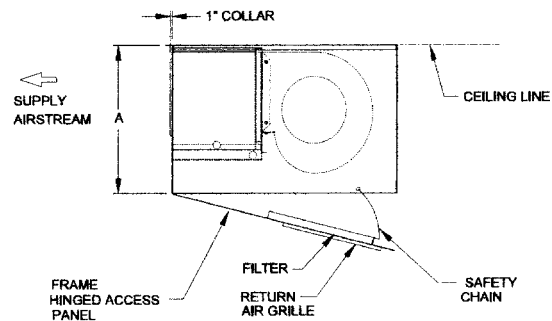
TOP VIEW



REAR VIEW (COIL CONNECTIONS)



FRONT VIEW



SIDE VIEW

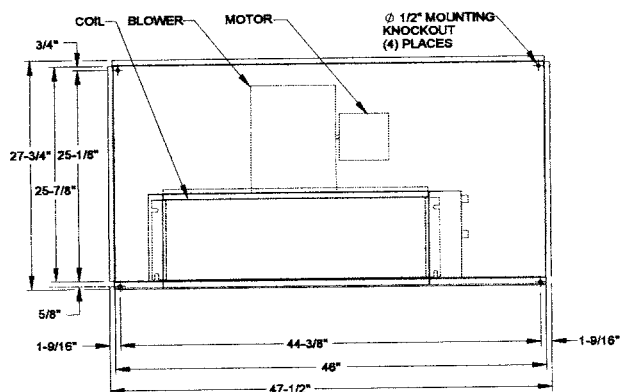
HORIZONTAL DELUXE									
MODEL	A	B	C	D	E	F	G	H	FILTER SIZE
04	11 3/8	43	24	21	40	9 3/8	6 1/4	24 3/4	(2) 12x20
06	12 3/8	53	28	25	50	11 3/8	6 1/4	30 3/4	(2) 12x25
08	12 3/8	53	28	25	50	11 3/8	7 3/4	30 3/4	(2) 12x25
10	12 3/8	61	28	25	58	12 3/8	7 3/4	36 3/4	(2) 12x25
12	12 3/8	61	28	25	58	9 3/8	7 3/4	42 3/4	(2) 12x25

Models 04 thru 12

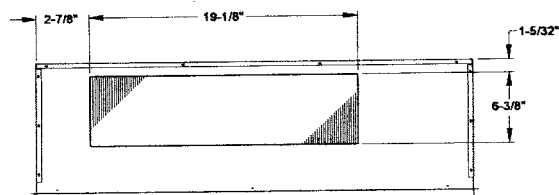
- Right-hand unit shown, left-hand unit opposite.
- Coil connections determined by facing the supply-air opening.
- Electrical junction box is located on the same side as the coil connections.
- Drain pan is powder-coated epoxy with a 1/4" thick closed-cell insulation and has 3/4" NPT primary and secondary drain connections.
- Entire cabinet, scroll and blower wheel are heavy-gauge, galvanized steel.
- Coil connections: 1/2" CW on sizes 04 & 06, 3/4" on sizes 08-12 and 1/2" HW on sizes 04-12

HORIZONTAL FLUSH

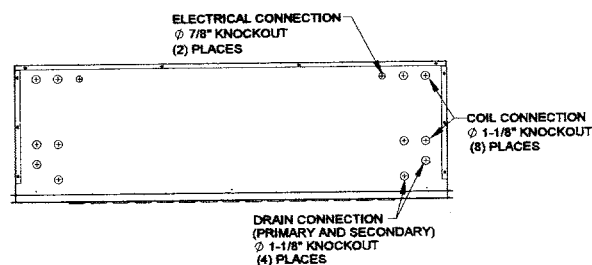
HORIZONTAL FLUSH - STANDARD & HIGH STATIC - 200-300 CFM - HFSW (WATER) - HFSX (DX)



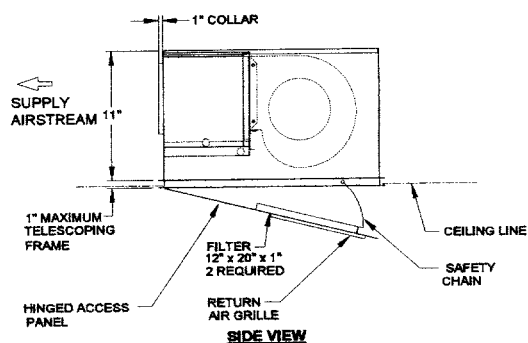
TOP VIEW



FRONT VIEW



REAR VIEW (COIL CONNECTIONS)



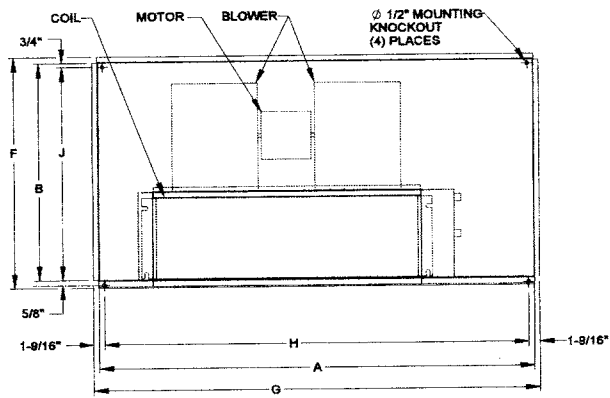
SIDE VIEW

Models 02 & 03

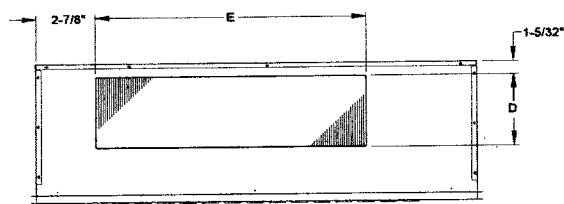
- Right-hand unit shown, left-hand unit opposite.
- Coil connections determined by facing the supply-air opening.
- Electrical junction box is located on the same side as the coil connections.
- Drain pan is powder-coated epoxy with a 1/4" thick closed-cell insulation and has 3/4" NPT primary and secondary drain connections.
- Entire cabinet, scroll and blower wheel are heavy-gauge, galvanized steel.
- Coil connections: 1/2" CW and HW on sizes 02 & 03.

HORIZONTAL FLUSH

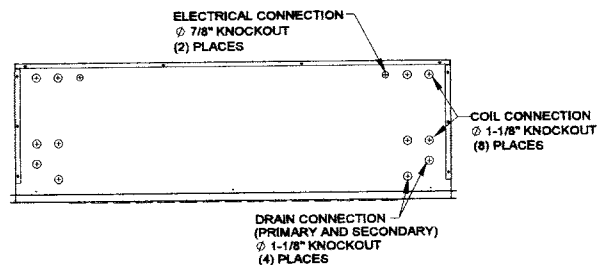
HORIZONTAL FLUSH - STANDARD & HIGH STATIC - 400 TO 1200 CFM - HFSW (WATER) - HFSX (DX)



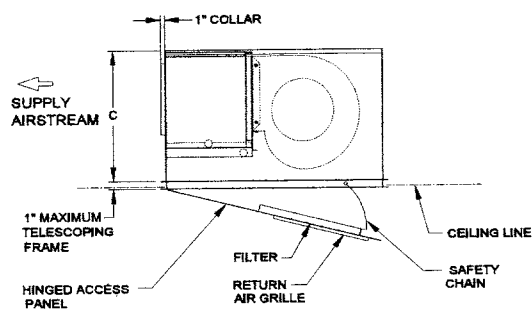
TOP VIEW



FRONT VIEW



REAR VIEW (COIL CONNECTIONS)



SIDE VIEW

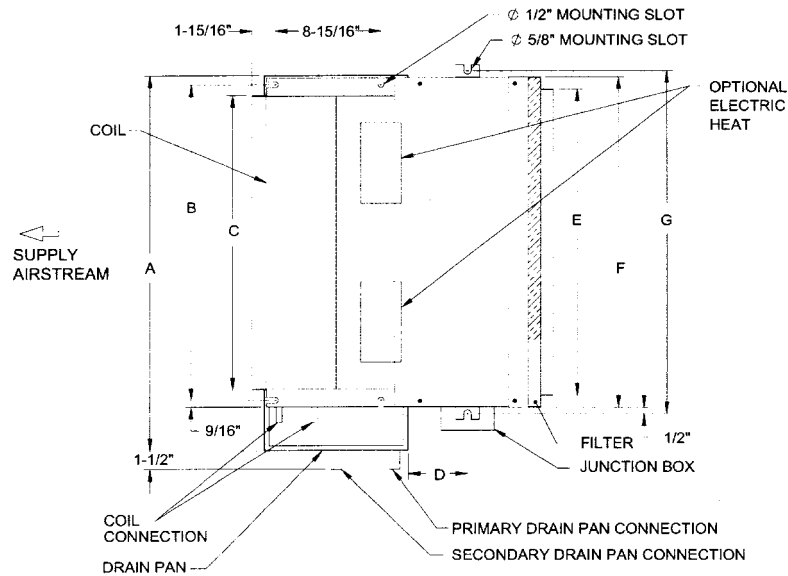
HORIZONTAL FLUSH 400 THRU 1200 CFM										
MODEL	A	B	C	D	E	F	G	H	J	FILTER SIZE
04	46	25 7/8	11	6 3/8	25 1/8	27 3/4	47 1/2	44 3/8	25 1/8	(2) 12x20
06	54	25 7/8	12	6 3/8	31 1/8	27 3/4	55 1/2	52 1/2	25 1/8	(2) 12x25
08	54	25 7/8	12	7 5/8	31 1/8	27 3/4	55 1/2	52 1/2	25 1/8	(2) 12x25
10	60	25 7/8	12	7 5/8	37 1/8	27 3/4	61 1/2	58 3/8	25 1/8	(2) 12x25
12	60	25 7/8	12	7 5/8	43 1/8	27 3/4	61 1/2	58 3/8	25 1/8	(2) 12x25

Models 04 thru 12

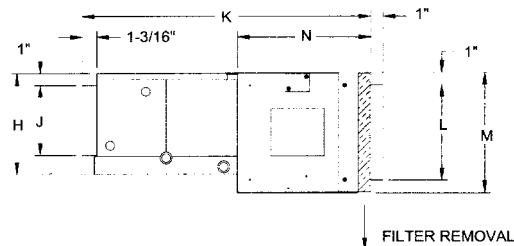
- Right-hand unit shown, left-hand unit opposite.
- Coil connections determined by facing the supply-air opening.
- Electrical junction box is located on the same side as the coil connections.
- Drain pan is powder-coated epoxy with a 1/4" thick closed-cell insulation and has 3/4" NPT primary and secondary drain connections.
- Entire cabinet, scroll and blower wheel are heavy-gauge, galvanized steel.
- Coil connections: 1/2" CW on sizes 04 & 06, 3/4" on sizes 08-12 and 1/2" HW on sizes 04-12

HORIZONTAL - RETURN PLENUM - REAR RETURN

HORIZONTAL RETURN PLENUM - REAR RETURN - STANDARD & HIGH STATIC 400-1200 CFM - HRSW (WATER) - HRSX (DX) - R (REAR RETURN)



TOP VIEW



SIDE VIEW

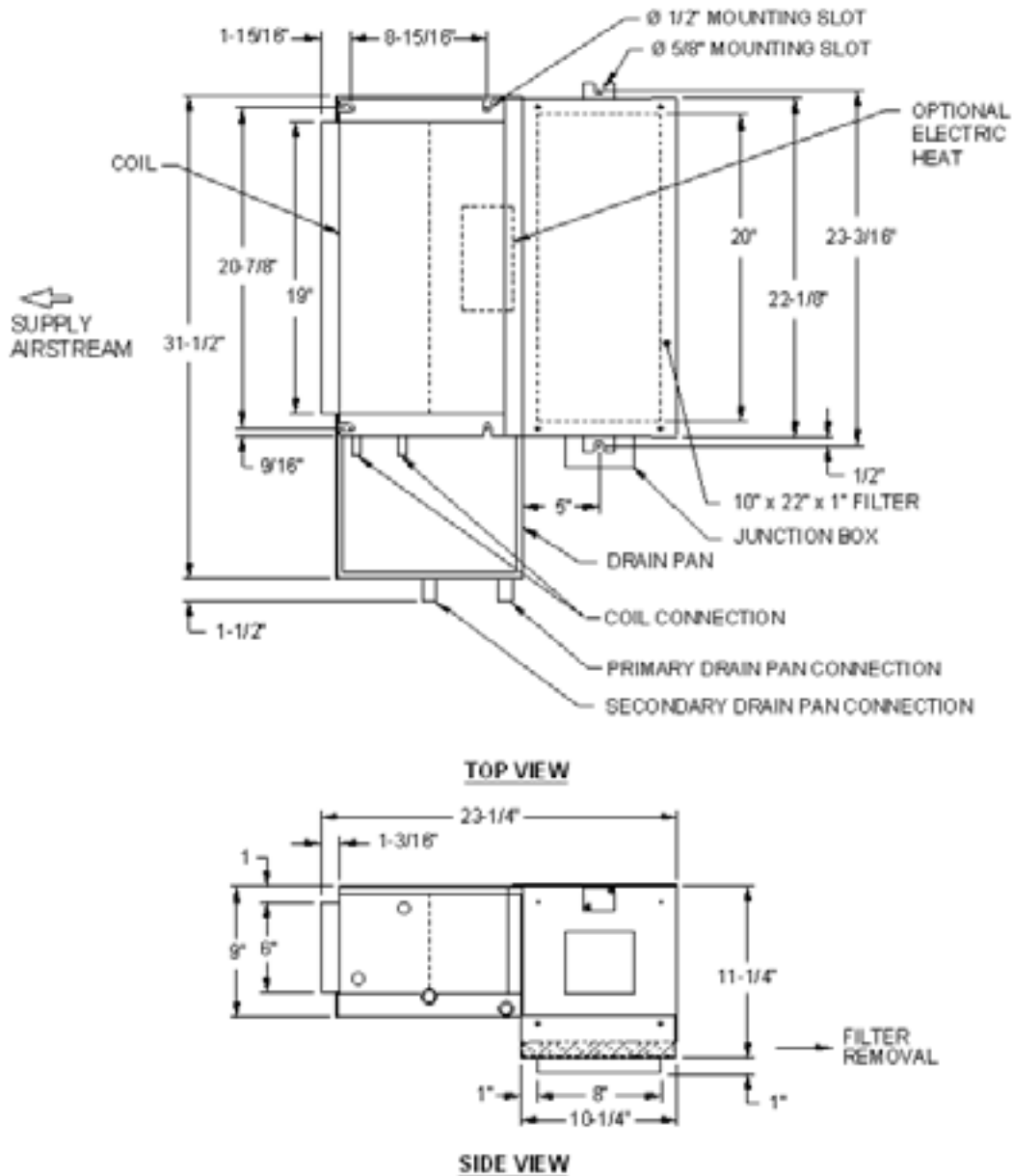
HORIZONTAL RETURN PLENUM- REAR RETURN														
MODEL	A	B	C	D	E	F	G	H	J	K	L	M	N	FILTER SIZE
04	31 1/2	26 7/8	25	5	26	28	29 3/16	9	6	24 1/2	8	10 1/4	11 1/4	10x28x1
06	37 1/2	32 7/8	31	5	32	34	35 3/16	9	6	24 1/2	8	10 1/4	11 1/4	10x34x1
08	37 1/2	32 7/8	31	6	32	34	35 3/16	10 3/8	7 13/16	26 1/2	10	12 1/4	13 1/4	12x34x1
10	49 1/2	38 7/8	37	6	38	40	41 3/16	10 3/8	7 13/16	26 1/2	10	12 1/4	13 1/4	12x40x1
12	49 1/2	44 7/8	43	6	44	46	47 3/16	10 3/8	7 13/16	26 1/2	10	12 1/4	13 1/4	12x46x1

Models 04 thru 12 (Rear)

- Right-hand unit shown, left-hand unit opposite.
- Coil connections determined by facing the supply-air opening.
- Electrical junction box is located on the same side as the coil connections..
- Drain pan is powder-coated epoxy with a 1/4" thick closed-cell insulation and has 3/4" NPT primary and secondary drain connections.
- Entire cabinet, scroll and blower wheel are heavy-gauge, galvanized steel.
- Coil connections: 1/2" CW on sizes 04 & 06, 3/4" on sizes 08-12 and 1/2" HW on sizes 04-12

HORIZONTAL - RETURN PLENUM - BOTTOM RETURN

HORIZONTAL RETURN PLENUM - BOTTOM RETURN - STANDARD & HIGH STATIC 200-300 CFM - HRSW (WATER) - HRSX (DX) - B (BOTTOM RETURN)

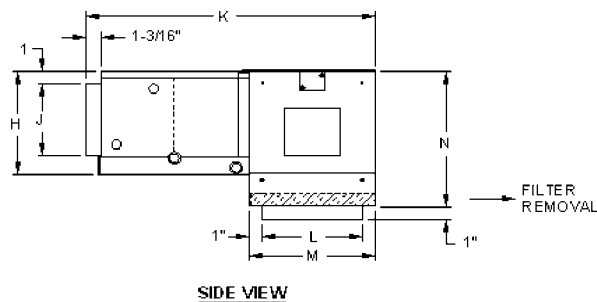
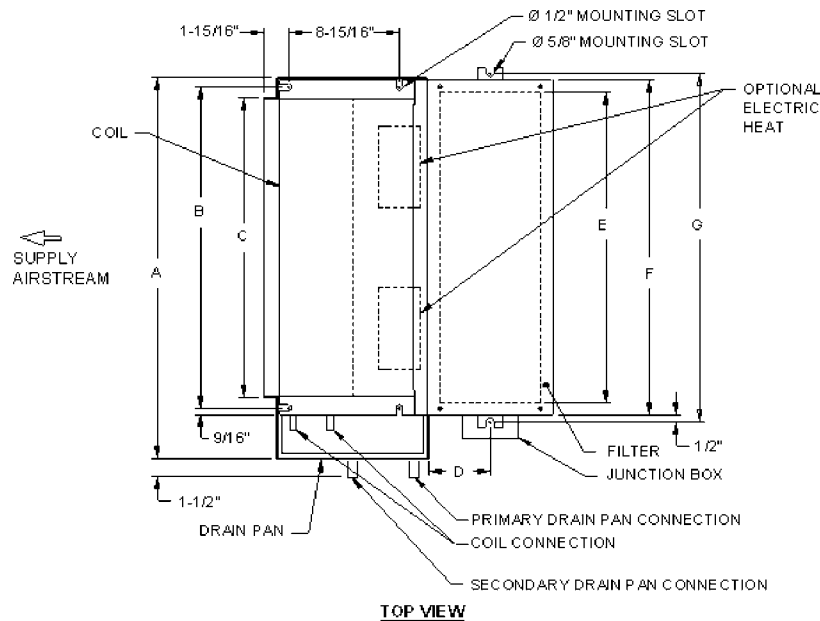


Models 02 & 03 (Bottom)

- Right-hand unit shown, left-hand unit opposite.
- Coil connections determined by facing the supply-air opening.
- Electrical junction box is located on the same side as the coil connections.
- Drain pan is powder-coated epoxy with a 1/4" thick closed-cell insulation and has 3/4" NPT primary and secondary drain connections.
- Entire cabinet, scroll and blower wheel are heavy-gauge, galvanized steel.
- Coil connections: 1/2" CW and HW on sizes 02 & 03.

HORIZONTAL - RETURN PLENUM - BOTTOM RETURN

HORIZONTAL RETURN PLENUM - BOTTOM RETURN - STANDARD & HIGH STATIC 400-1200 CFM - HRSW (WATER) - HRSX (DX) - B (BOTTOM RETURN)



HORIZONTAL REAR RETURN-AIR PLENUM														
MODEL	A	B	C	D	E	F	G	H	J	K	L	M	N	FILTER SIZE
04	31 1/2	26 7/8	25	5	26	28	29 3/16	9	6	23 1/2	8	10 1/4	11 1/4	10x28x1
06	37 1/2	32 7/8	31	5	32	34	35 3/16	9	6	23 1/2	8	10 1/4	11 1/4	10x34x1
08	37 1/2	32 7/8	31	6	32	34	35 3/16	10 3/8	7 13/16	25 1/2	10	12 1/4	13 1/4	12x34x1
10	49 1/2	38 7/8	37	6	38	40	41 3/16	10 3/8	7 13/16	25 1/2	10	12 1/4	13 1/4	12x40x1
12	49 1/2	44 7/8	43	6	44	46	47 3/16	10 3/8	7 13/16	25 1/2	10	12 1/4	13 1/4	12x46x1

Models 04 thru 12 (Bottom)

- Right-hand unit shown, left-hand unit opposite.
- Coil connections determined by facing the supply-air opening.
- Electrical junction box is located on the same side as the coil connections.
- Drain pan is powder-coated epoxy with a 1/4" thick closed-cell insulation and has 3/4" NPT primary and secondary drain connections.
- Entire cabinet, scroll and blower wheel are heavy-gauge, galvanized steel.
- Coil connections: 1/2" CW on sizes 04 & 06, 3/4" on sizes 08-12 and 1/2" HW on sizes 04-12

HORIZONTAL WEIGHTS & MEASURES

The following Standard Hi-Static Unit's weights and measures are based on fan coil units only. Add approximately 20% for packaging and crating.

UNIT	MODEL	ROWS	DIMENSIONS/INCHES			WEIGHT/LBS.		DIMENSIONS/MILLIMETERS			WEIGHT/kg	
			HEIGHT	WIDTH	DEPTH	DRY	WET	HEIGHT	WIDTH	DEPTH	DRY	WET
BASIC STANDARD OR HI-STATIC	02	3	10	32	22	75	79	254	813	559	34	36
	02	4	10	32	22	80	85	254	813	559	36	38
	03	3	10	32	22	75	79	254	813	559	34	36
	03	4	10	32	22	80	85	254	813	559	36	38
	04	3	10	32	22	90	96	254	813	559	41	43
	04	4	10	32	22	96	103	254	813	559	43	47
	06	3	10	38	22	111	117	254	965	559	50	53
	06	4	10	38	22	117	125	254	965	559	53	57
	08	3	11	38	23	124	130	280	965	584	56	59
	08	4	11	38	23	130	138	280	965	584	59	63
	10	3	11	50	23	144	151	280	1270	584	65	68
	10	4	11	50	23	150	159	280	1270	584	68	72
	12	3	11	50	23	153	161	280	1270	584	69	73
	12	4	11	50	23	160	171	280	1270	584	73	78

RETURN-AIR PLENUM STANDARD OR HI-STATIC	02	3	11	32	26	95	99	280	813	661	43	45
	02	4	11	32	26	100	105	280	813	661	45	47
	03	3	11	32	26	95	99	280	813	661	43	45
	03	4	11	32	26	100	105	280	813	661	45	47
	04	3	11	32	26	120	136	280	813	661	54	57
	04	4	11	32	26	126	133	280	813	661	57	60
	06	3	11	38	26	131	137	280	965	661	59	62
	06	4	11	38	26	137	145	280	965	661	62	66
	08	3	13	38	27	144	150	330	965	661	65	68
	08	4	13	38	27	150	158	330	965	661	68	72
	10	3	13	50	27	164	171	330	1270	686	74	77
	10	4	13	50	27	170	179	330	1270	686	77	81
	12	3	13	50	27	173	181	330	1270	686	78	82
	12	4	13	50	27	180	191	330	1270	686	82	87

DELUXE STANDARD OR HI-STATIC	02	3	11	43	24	165	169	280	1092	610	75	76
	02	4	11	43	24	170	175	280	1092	610	77	79
	03	3	11	43	24	165	169	280	1092	610	75	76
	03	4	11	43	24	170	175	280	1092	610	77	79
	04	3	11	43	24	175	181	280	1092	610	79	82
	04	4	11	43	24	181	188	280	1092	610	82	85
	06	3	13	53	28	174	180	330	1346	711	79	82
	06	4	13	53	28	180	188	330	1346	711	82	85
	08	3	13	53	28	184	190	330	1346	711	83	86
	08	4	13	53	28	190	198	330	1346	711	86	90
	10	3	13	61	28	204	211	330	1549	711	92	96
	10	4	13	61	28	210	219	330	1549	711	95	99
	12	3	13	61	28	213	221	330	1549	711	97	100
	12	4	13	61	28	220	231	330	1549	711	100	105

DELUXE STANDARD OR HI-STATIC	02	3	11	48	28	106	110	279	1219	711	48	50
	02	4	11	48	28	111	116	279	1219	711	50	52
	03	3	11	48	28	106	110	279	1219	711	48	50
	03	4	11	48	28	111	116	279	1219	711	50	52
	04	3	11	48	28	149	155	279	1219	711	68	70
	04	4	11	48	28	155	162	279	1219	711	70	74
	06	3	12	56	28	149	155	305	1422	711	67	70
	06	4	12	56	28	155	163	305	1422	711	70	74
	08	3	12	56	28	159	165	305	1422	711	72	75
	08	4	12	56	28	165	173	305	1422	711	75	78
	10	3	12	62	28	179	186	305	1575	711	81	84
	10	4	12	62	28	185	194	305	1575	711	84	88
	12	3	12	62	28	188	196	305	1575	711	85	89
	12	4	12	62	28	195	200	305	1575	711	88	93

HORIZONTAL - GUIDE SPECIFICATIONS

GENERAL

Furnish and install Coil Company Horizontal Direct Drive Fan Coil Units as indicated on the plans and in the specifications. All Units shall be completely factory-assembled, tested and shipped as one working unit. All units shall be capable of meeting or exceeding the scheduled capacities for cooling, heating and air delivery. Dimensions for each model and size shall be considered maximums. Units shall be UL listed and also in compliance with UL/ANSI Standard 1995, and be certified as complying with the latest edition of ARI Standard 440.

CONSTRUCTION

All unit chassis shall be fabricated of heavy gauge galvanized steel panels able to meet 125-hour salt spray test per ASTM B-117. All exterior panels shall be insulated with 1/2" thick, 3.35 pound per cubic foot, dual density fiberglass insulation rated for a maximum air velocity of 3600 f.p.m. Insulation shall conform to UL 181 for erosion and NFPA 90A and 90B for flame spread (25) and smoke developed (50) rating per ASTM E-84 and UL 723 and CAN./ULC, S102-M88.

All concealed units shall have a minimum 1" duct collar on the discharge. Plenum units shall have a minimum 1" collar on the return.

All exposed units shall have exterior panels fabricated of cold-rolled steel. The fan and filter bottom access panel has two screws for easy removal and access for service and is also equipped with a safety chain.

OPTION: Provide foil-faced insulation in lieu of standard. Foil insulation shall meet or exceed the requirements stated above, and in addition, meet ASTM Standards C665 and C-1136 for biological growth in insulation. Insulation shall be lined with aluminum foil, fiberglass scrim reinforcement, and 30-pound kraft paper laminated together with a flame resistant adhesive. All exposed edges shall be sealed to prevent any fibers from reaching the air stream.

OPTION: Provide Elastometric Closed Cell Foam Insulation in lieu of standard. Insulation shall conform to UL 181 for erosion and NFPA 90A for fire, smoke and melting, and comply with a 25/50 Flame Spread and Smoke Developed Index per ASTM E-84 or UL 723. Additionally, insulation shall comply with Antimicrobial Performance Rating of zero, no observed growth, per ASTM G21. Polyethylene insulation is not acceptable.

Unit mounting shall be by hanger and slotted hanging brackets provided at four locations. For easy installation, exposed units provided with 1/2" mounting knockouts in four places.

PAINTED FINISH

All exposed cabinet exterior panels shall be provided with soft-white powder-coated epoxy finish.

SOUND

Units shall have published sound power level data tested in accordance with ARI Standard 350-2000 (non-ducted equipment) and ARI Standard 260-2001 (ducted equipment).

FAN ASSEMBLY

Unit fan shall be dynamically balanced, forwardly curved, DWDI centrifugal type constructed of heavy gauge zinc coated galvanized steel for corrosion resistance. Motors shall be high efficiency, permanently lubricated sleeve bearing, permanent split-capacitor type with UL and C-UL listed automatic reset thermal overload protection and three separate horsepower taps. Single speed motors are not acceptable.

The fan assembly shall be easily removable for servicing the motor and blower at or away from the unit. The entire fan assembly shall be able to come out of the unit by removing two wing nuts and unplugging the motor.

Plenum unit fan assemblies shall be easily serviced through an access panel provided.

OPTION: Devices used to energize and de-energize (switch) fan speeds must be totally silent. Mercury and/or quiet relays and/or contactors are not acceptable.

COILS

All cooling and heating coils shall optimize rows and fins per inch to meet the specified capacity. Coils shall have seamless copper tubes and shall be mechanically expanded to provide an efficient, permanent bond between the tube and fin. Fins shall have high efficiency aluminum surface optimized for heat transfer, air pressure drop and carryover.

All coils shall be hydrostatically tested at 350 PSIG air pressure under water, and rated for a maximum of 300 PSIG working pressure at 180°F maximum water temperature. Direct expansion cooling coils shall include a fixed orifice distributor and nozzle.

Steam coils shall be standard steam type suitable for temperatures above 35°F and 15 PSIG maximum working pressure.

HORIZONTAL GUIDE SPECIFICATIONS

OPTION: Coil casing shall be fabricated from 304 Stainless Steel.

All coils shall be provided with a manual-air vent fitting to allow for coil venting.

OPTION: Provide automatic air vents in lieu of manual-air vents.

Cooling and heating coils shall be in the common coil casing, heating coils shall be furnished in the re-heat or pre-heat position on the unit with chilled water coils, and DX heating coil shall be in pre-heat position only.

DRAIN PANS

Primary condensate drain pans shall be single wall, heavy gauge, powder-coated epoxy and extend under the entire cooling coil. Drain pans shall be of one-piece construction and be positively sloped for condensate removal. Drain pans shall have primary and secondary drain connections.

The drain pan shall be externally insulated with a closed cell foam insulation. The insulation shall carry no more than a 25/50 Flame Spread and Smoke Developed Rating per ASTM E-84 and UL 723 and fungi resistant per ASTM G21/C1338, bacteria resistant per ASTM G22 and mold growth per UL 181.

OPTION: Provide a single wall primary drain pan constructed entirely of heavy gauge type 304 stainless steel for superior corrosion resistance. Stainless steel drain pans shall be externally insulated and meet or exceed the requirements stated above.

FILTERS

All plenum and exposed units shall be furnished with a minimum 1" nominal glass fiber throwaway filter. Filters shall be tight fitting to prevent air bypass. Plenum and exposed unit filters shall be easily removable from the bottom or rear of the unit without the need for tools.

OPTION: Provide unit with 1" pleated filters rated at 25-30% efficiency and MERV 6 based ASHRAE 52.2 - 1999.

ELECTRICAL

Units shall be furnished with single point power connection. Provide an electrical junction box with terminal strip for motor and other electrical terminations.

OPTION: The factory-mounted terminal wiring strip consists of a multiple position screw terminal block to facilitate wiring terminations for the electric control valves and thermostats.

ELECTRIC HEAT

Furnish an electric resistance heating assembly as an integral part of the fan coil unit, with the heating capacity, voltage and kilowatts scheduled. The heater assembly shall be designed and rated for installation on the fan coil unit without the use of duct extensions or transitions, and be located in the unit as to not expose the fan assembly to excessive leaving air temperatures that could affect motor performance.

The heater and unit assembly shall be listed for zero clearance and meet all NEC requirements, and be UL listed with the unit as an assembly in compliance with UL/ANSI Standard 1995.

All heating elements shall be open coil type Nichrome wire mounted in ceramic insulators and located in an insulated heavy gauge galvanized steel housing. All elements shall terminate in a machine staked stainless steel terminal secured with stainless steel hardware for corrosion resistance. The element support brackets shall be spaced no greater than 3 1/2" on center. All internal wiring shall be rated for 90°C minimum.

All heaters shall include over temperature protection consisting of an automatic reset primary thermal limit and back up secondary thermal limit. All heaters shall be single stage.

An incoming line power distribution block shall be provided and designated to accept single point power wiring capable of carrying 125% of the calculated load current.

OPTION: Devices used to energize and de-energize (switch) electric heat must be totally silent. Mercury and/or quiet relays and/or contactors are not acceptable.

PIPING PACKAGES

Provide a factory assembled valve piping package to consist of a 2 or 3 way, on/off, motorized electric control valve and two ball isolation valves. Control valves are piped normally closed to the coil. Maximum entering water temperature on the control valve is 180°F, and maximum close-off pressure is 75 PSIG (1/2") or 50 PSIG (3/4"). Maximum operating pressure shall be 300 PSIG.

OPTION: Provide 3-wire floating point modulating control valve in lieu of 2-position control valve with factory assembled valve piping package.

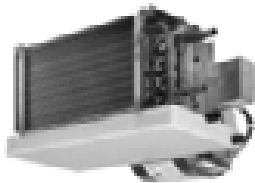
OPTION: Provide either a fixed or adjustable flow control device for each piping package.

OPTION: Provide pressure-temperature ports for each piping package.

Piping packages are shipped installed on all units and can be shipped separately by request only.

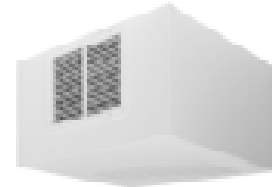
HORIZONTAL HIGH PERFORMANCE

Horizontal High Performance Fan Coils



**Basic Horizontal
High Performance**
600 Thru 2200 CFM

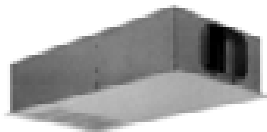
Basic Horizontal High Performance Model has a low profile and flexible design. It is right choice for multiple applications where high static performance is required. The slim, compact design is well suited for drop-ceiling, hallway and other concealed applications. This unit comes with a powder-coated epoxy drain pan and a wide range of coil, motor and controls options. These models have no exterior cabinet.



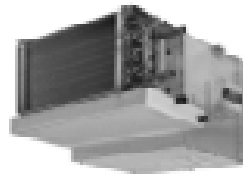
**Deluxe Horizontal
High Performance**
600 Thru 2200 CFM

Deluxe Horizontal Model is designed for horizontal, exposed ceiling-mounted applications where high static performance is required. This model is a basic unit installed in a fully-cased cabinet for "free-blow" exposed ceiling mounting. Unit is ideal for remodel situations where the addition of air conditioning ductwork is limited. Deluxe cabinets are constructed of cold-rolled steel and finished with a soft white epoxy powder-coated finish, and subjected to a 1500-hour salt spray test in accordance with ASTM-B117.

**Horizontal Flush
High Performance**
600 Thru 2200 CFM



Horizontal Flush High Performance is a horizontally ducted fan coil that aligns flush with the ceiling. Ideal for horizontal applications in apartments, condominiums and motels requiring either a drop-ceiling or soffit installation, the Horizontal Flush High Performance unit has a swing-down access panel for fast and easy filter removal and routine maintenance. Bottom return-air is standard.



**Horizontal Rear
Return-Air Plenum
High Performance**
600 Thru 2200 CFM

Horizontal Rear Return/Bottom Return-Air Plenum High Performance is the same as the Basic with a galvanized rear return-air plenum. It is ideal for mounting above ceilings, in closets, hallways or bathroom areas. The plenum conceals the blower motor which is easily accessible for servicing by removing the bottom panel.

HORIZONTAL HIGH PERFORMANCE

Horizontal High Performance Fan Coils Standard Features and Options

HORIZONTAL FAN COIL FEATURES

Coils – 1/2" OD copper tube with aluminum fins (12 FPI) equipped with manual-air vent. DX and steam coils do not include manual-air vent. Coils are 100% underwater pressure tested at 350 PSI with a 300 PSI working pressure.

Cabinet – Heavy-gauge galvanized steel with neoprene coated 1/2" thick fiberglass insulation with 3.35 PCF density.

Drain Pan – Galvanized and is powder coated epoxy and subjected to a 650-hour salt spray test in accordance with ASTM-B117. Also comes with a 1/4" thick closed-cell insulation and has primary and secondary drain connections.

Motors – Three-speed, 115V/1/60 PSC motor with quick-connect plug.

Controls – Controls and motors are factory-wired and terminated in a junction box for single-point power supply.

Air Openings – One-inch reinforced collar on return and supply-air openings. Swing-down, hinged return air grille/access door on deluxe and flush models. Deluxe Unit has single-deflection supply-air grille.

Filter – One-inch fiberglass, throwaway filter except Horizontal Basic Unit

Added Features – Protective cardboard covers openings during shipment and construction. Each unit is tagged and crated as scheduled for installation.

Certification – UL and cUL approved, ARI certified and 100% factory tested.

OPTIONAL FEATURES FOR 'BEST IN THE INDUSTRY' FAN/COILS.

Cabinet – Soft-white, powder-coated epoxy cabinet that's subjected to a 1500-hour salt spray test in accordance with ASTM-B117. Deluxe, Flush and custom colors.

Drain Pans – Stainless steel.

Coils – Copper fins/tubes, stainless steel fins/tubes, phenolic coated, stainless-steel end plates. All options are available on one to six rows.

Motors – Three-speed, 208-230/1/50-60 or 277/1/60 PSC motor with quick-connect plug.

Insulation – fiberglass, foil-faced, elastomeric and double-wall (solid or perforated) in 1/2" and 1" thickness.

Systems – Two or Four-pipe, Hydronic cooling/heating, Steam, Direct-expansion (DX) and/or Electric Heat.

Grilles – Double deflection and custom colors.

Controls – Wide selection of factory-mounted valves and controls.

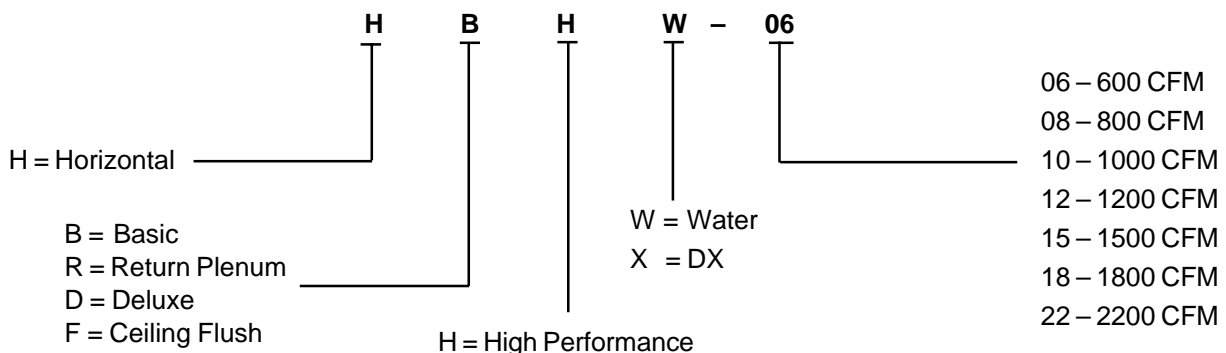
Filters – Two-inch thick throwaway, washable and metallic.

Flow-Control Pump – For water heating applications.

Electric Strip Heat – From 0.5 to 5 kW

Miscellaneous – Ultraviolet Lights

HORIZONTAL HIGH PERFORMANCE FAN COIL NOMENCLATURE



HORIZONTAL HIGH PERFORMANCE

ARI CERTIFIED COOLING CAPACITY

MODEL / SIZE	ARI APPROVED STANDARD RATINGS					COOLING CAPACITY		POWER INPUT (WATTS)
	MOTOR / TYPE	STYLE	RATED CFM	GPM	WPD (FT./H ₂ O)	TOTAL COOLING (BTUH)	SENSIBLE COOLING (BTUH)	
04	STANDARD	FLUSH	470	2.6	2.3	13,040	10,780	286
06	STANDARD	FLUSH	580	3.0	3.0	15,040	12,710	296
	HIGH STATIC	BASIC	730	3.0	4.0	15,070	13,180	273
		RETURN PLENUM	680	2.9	3.7	14,500	12,360	268
		DELUXE, FLUSH	650	2.8	3.6	14,160	11,860	262
08	STANDARD	FLUSH	680	3.4	3.7	16,860	12,870	348
	HIGH STATIC	BASIC	900	4.1	7.3	20,580	17,330	380
		RETURN PLENUM	875	4.0	7.0	20,190	16,900	371
		DELUXE, FLUSH	850	4.0	6.8	19,800	16,490	366
10	HIGH STATIC	BASIC	1120	5.7	4.2	28,590	23,160	403
		RETURN PLENUM	1025	5.4	3.8	26,940	21,520	398
		DELUXE, FLUSH	1010	5.3	3.8	26,680	21,260	392
12	HIGH STATIC	BASIC	1370	7.6	5.2	38,080	30,860	540
		RETURN PLENUM	1250	7.2	4.7	35,930	28,770	532
		DELUXE, FLUSH	1250	7.1	4.6	35,570	28,420	524
15	HIGH STATIC	BASIC	1650	9.0	4.9	45,120	36,870	560
		RETURN PLENUM	1600	8.8	4.8	44,230	36,000	548
		DELUXE, FLUSH	1500	8.5	4.5	42,450	34,250	536
18	HIGH STATIC	BASIC	2180	12.1	8.6	60,510	48,900	806
		RETURN PLENUM	2060	11.7	8.1	58,410	46,860	786
		DELUXE, FLUSH	2000	11.4	7.8	57,220	45,700	762
22	HIGH STATIC	BASIC	2540	14.8	12.0	73,960	58,480	1060
		RETURN PLENUM	2290	13.8	11.5	69,190	53,870	1026
		DELUXE, FLUSH	2230	13.6	11.2	68,160	52,870	998

Notes: 1) Based on 80°F DB and 67°F WB EAT, 45°F EWT 10°F temperature rise, high fan speed. Motor voltage 115/1/60 power source. Air flow under dry coil conditions. Water pressure drops shown in feet of water.

All units are listed under UL Category Control No. LZFE.

2) Ratings are based on actual CFM. Standard coils for 04 is 3 rows and 06-22 is 4 rows.

HORIZONTAL HIGH PERFORMANCE

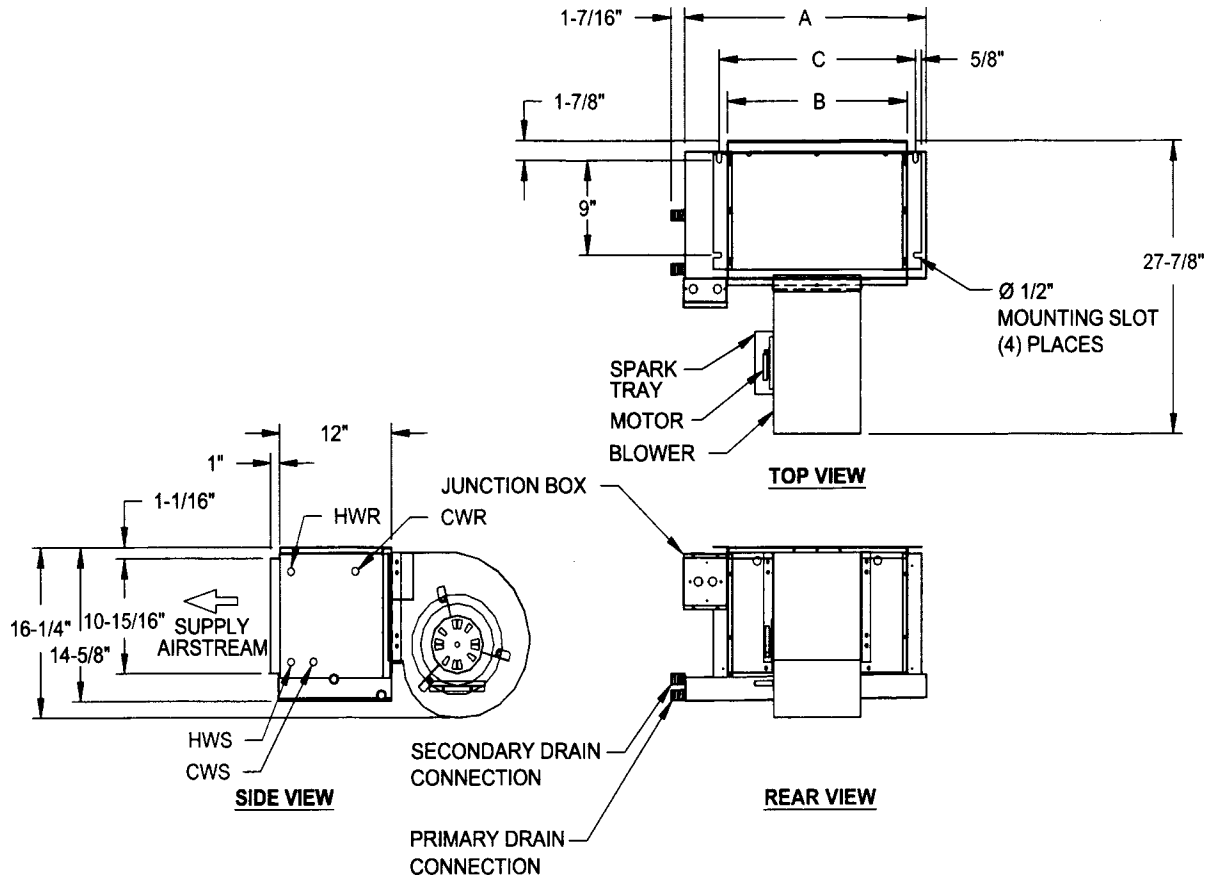
HEATING PERFORMANCE - HORIZONTAL FAN COILS - HIGH PERFORMANCE

HEATING PERFORMANCE						
MODEL / SIZE	MOTOR / TYPE	COIL ROWS / (FPI)	RATED CFM	MBH	GPM	WPD (FT. / H ₂ O)
04	STANDARD	1 ROW (12)	470	18.8	0.9	1.2
		2 ROWS (12)	470	29.8	1.5	0.9
06	STANDARD	1 ROW (12)	520	21.8	1.1	1.4
		2 ROWS (12)	520	35.5	1.8	1.1
	HIGH STATIC	1 ROW (12)	665	18.8	0.9	1.0
		2 ROWS (12)	665	31.8	1.6	0.8
08	STANDARD	1 ROW (12)	770	24.5	1.2	1.6
		2 ROWS (12)	770	40.8	2.0	1.3
	HIGH STATIC	1 ROW (12)	855	25.8	1.3	1.7
		2 ROWS (12)	855	43.4	2.2	1.4
10	HIGH STATIC	1 ROW (12)	1010	33.9	1.7	3.0
		2 ROWS (12)	1010	55.8	2.8	2.3
12	HIGH STATIC	1 ROW (12)	1250	38.4	1.9	0.8
		2 ROWS (12)	1250	68.3	3.4	2.0
15	HIGH STATIC	1 ROW (12)	1580	49.6	2.5	1.3
		2 ROWS (12)	1580	85.9	4.3	3.1
18	HIGH STATIC	1 ROW (12)	2005	62.1	3.1	1.9
		2 ROWS (12)	2005	107.3	5.4	4.8
22	HIGH STATIC	1 ROW (12)	2285	72.2	3.6	2.6
		2 ROWS (12)	2285	124.4	6.2	6.5

Notes: Based on 70°F DB EAT, 180°F EWT, 40°F temperature rise, high fan speed. Motor voltage 115/1/60 power source. Air flow under dry coil conditions. Water pressure drops shown in feet of water.

HORIZONTAL HIGH PERFORMANCE - BASIC

HORIZONTAL BASIC - HIGH PERFORMANCE - 600 TO 1200 CFM - HBHW (WATER) - HBHX (DX)



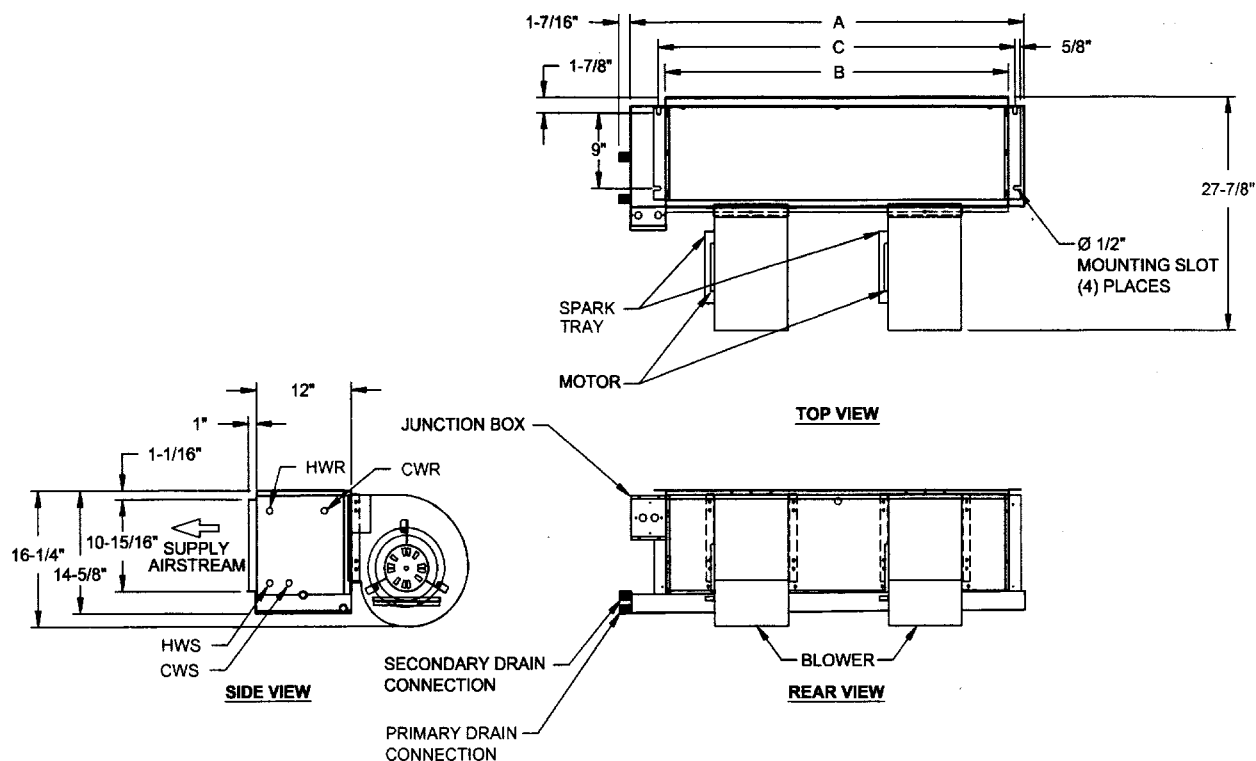
HORIZONTAL BASIC - HI. PERF. - 600-1200 CFM			
MODEL	A	B	C
06	21 1/2	15	16 3/4
08	25 1/2	19	20 3/4
10	31 1/2	25	26 3/4
12	37 1/2	31	32 3/4

Horizontal Basic - High Performance Models 06 thru 12

- Right-hand unit shown, left-hand unit opposite.
- Coil connections determined by facing the supply-air opening.
- Electrical junction box is located on the same side as the coil connections.
- Drain pan is powder-coated epoxy with a 1/4" thick closed-cell insulation and has 3/4" NPT primary and secondary drain connections.
- Entire cabinet, scroll and blower wheel are heavy-gauge, galvanized steel.
- Coil connections: 1/2" CW on size 06, 3/4" on sizes 08-12 and 1/2" HW on sizes 06-12

HORIZONTAL HIGH PERFORMANCE - BASIC

HORIZONTAL BASIC - HIGH PERFORMANCE - 1500 TO 2200 CFM - HBHW (WATER) - HBHX (DX)



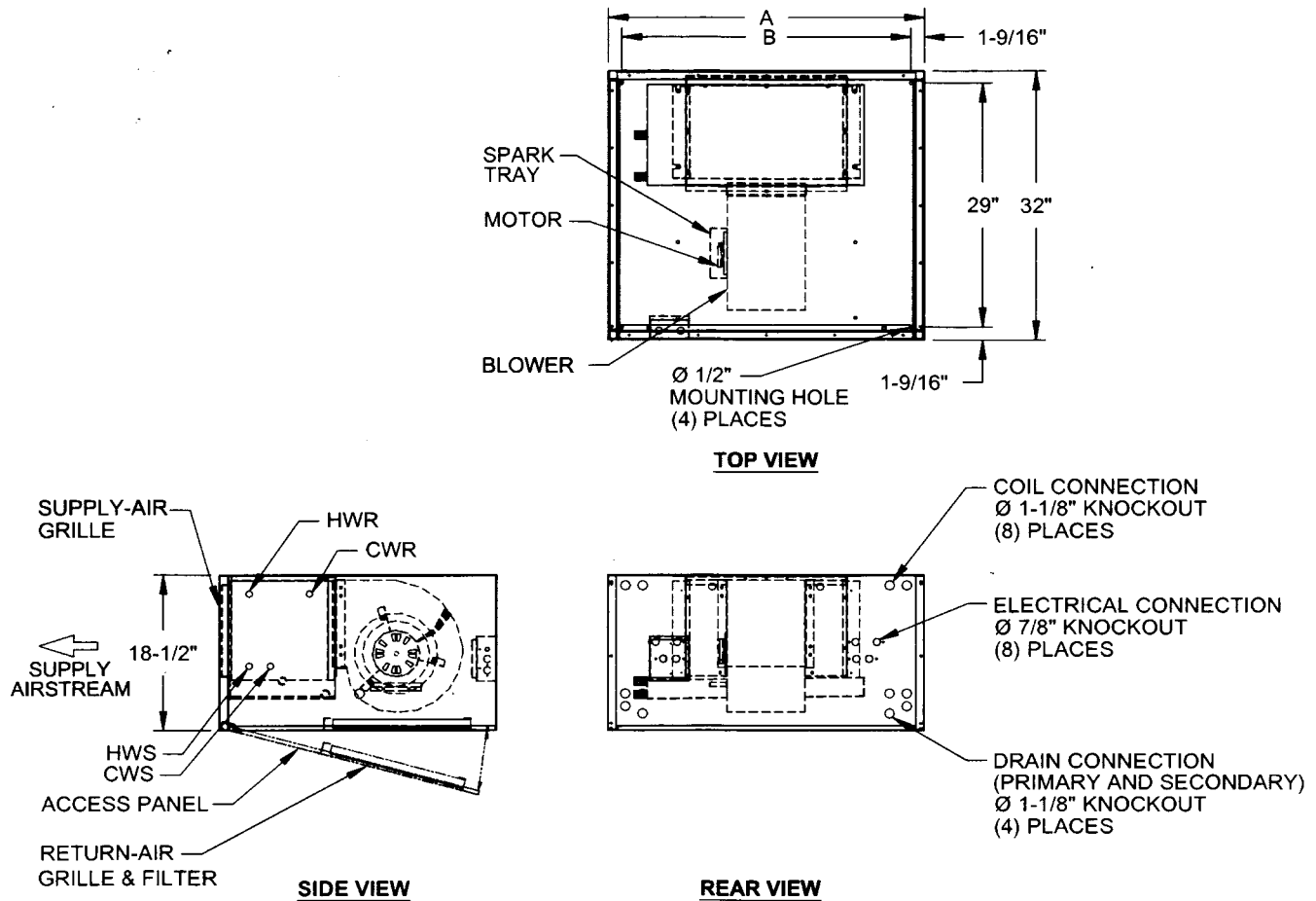
HORIZONTAL BASIC - HI. PERF. - 1500-2200 CFM			
MODEL	A	B	C
15	43 1/2	37	38 3/4
18	49 1/2	43	44 3/4
22	55 1/2	49	50 3/4

Horizontal Basic - High Performance Models 15 thru 22

- Right-hand unit shown, left-hand unit opposite.
- Coil connections determined by facing the supply-air opening.
- Electrical junction box is located on the same side as the coil connections.
- Drain pan is powder-coated epoxy with a 1/4" thick closed-cell insulation and has 3/4" NPT primary and secondary drain connections.
- Entire cabinet, scroll and blower wheel are heavy-gauge, galvanized steel.
- Coil connections: 3/4" cw on sizes 15-22 and 1/2" HW on sizes 15-22

HORIZONTAL HIGH PERFORMANCE - DELUXE

HORIZONTAL DELUXE - HIGH PERFORMANCE - 600 TO 1200 CFM - HDHW (WATER) - HDHX (DX)



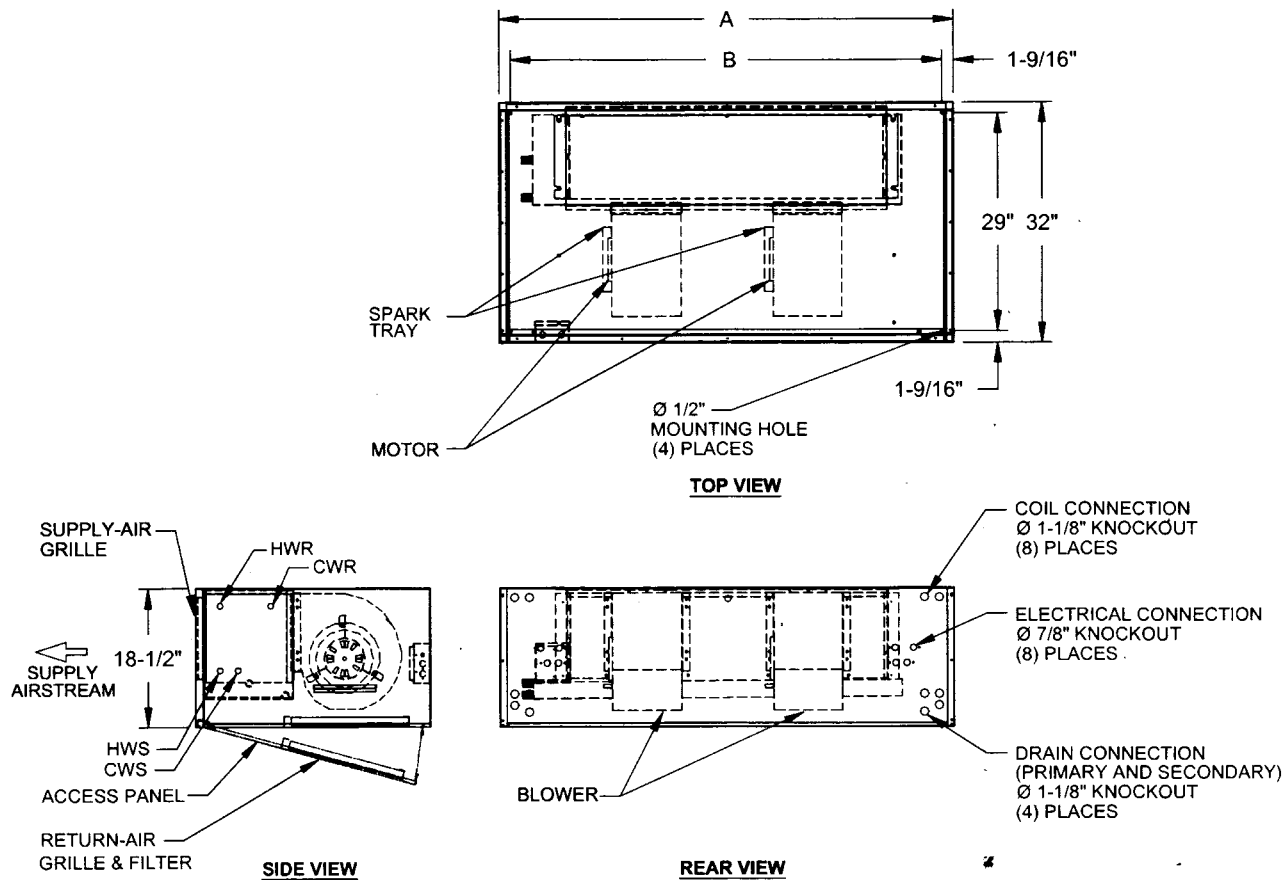
HORIZONTAL DELUXE - HI. PERF. - 600-1200 CFM			
MODEL	A	B	FILTER SIZE
06	33	29 7/8	17x28x1
08	37	33 7/8	17x34x1
10	43	39 7/8	17x40x1
12	49	45 7/8	17x46x1

Horizontal Deluxe - High Performance Models 06 thru 12

- Right-hand unit shown, left-hand unit opposite.
- Coil connections determined by facing the supply-air opening.
- Electrical junction box is located on the same side as the coil connections.
- Drain pan is powder-coated epoxy with a 1/4" thick closed-cell insulation and has 3/4" NPT primary and secondary drain connections.
- Entire cabinet, scroll and blower wheel are heavy-gauge, galvanized steel.
- Coil connections: 1/2" CW on size 06, 3/4" on sizes 08-12 and 1/2" HW on sizes 06-12

HORIZONTAL HIGH PERFORMANCE - DELUXE

HORIZONTAL DELUXE - HIGH PERFORMANCE - 1500 TO 2200 CFM - HDHW (WATER) - HDHX (DX)



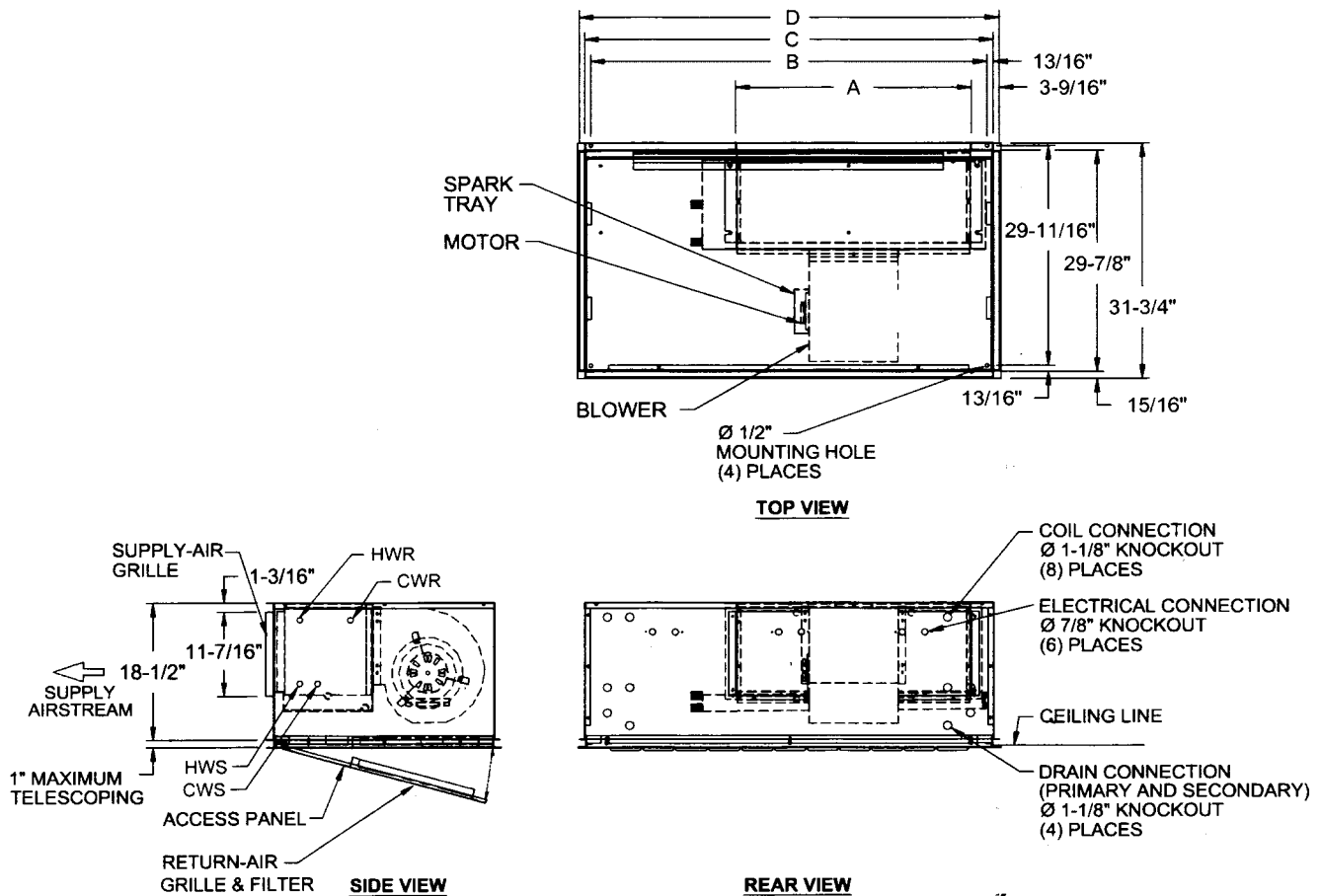
HORIZONTAL DELUXE - HI. PERF. - 1500-2200 CFM			
MODEL	A	B	FILTER SIZE
15	55	51 7/8	(1) 17x46x1
18	61	57 7/8	(1) 17x52x1
22	67	63 7/8	(1) 17x52x1

Horizontal Deluxe - High Performance Models 15 thru 22

- Right-hand unit shown, left-hand unit opposite.
- Coil connections determined by facing the supply-air opening.
- Electrical junction box is located on the same side as the coil connections.
- Drain pan is powder-coated epoxy with a 1/4" thick closed-cell insulation and has 3/4" NPT primary and secondary drain connections.
- Entire cabinet, scroll and blower wheel are heavy-gauge, galvanized steel.
- Coil connections: 3/4" cw on sizes 15-22 and 1/2" HW on sizes 15-22

HORIZONTAL HIGH PERFORMANCE - FLUSH

HORIZONTAL FLUSH - BOTTOM RETURN HIGH PERFORMANCE - 600 TO 1200 CFM - HFHW (WATER) - HFHX (DX)



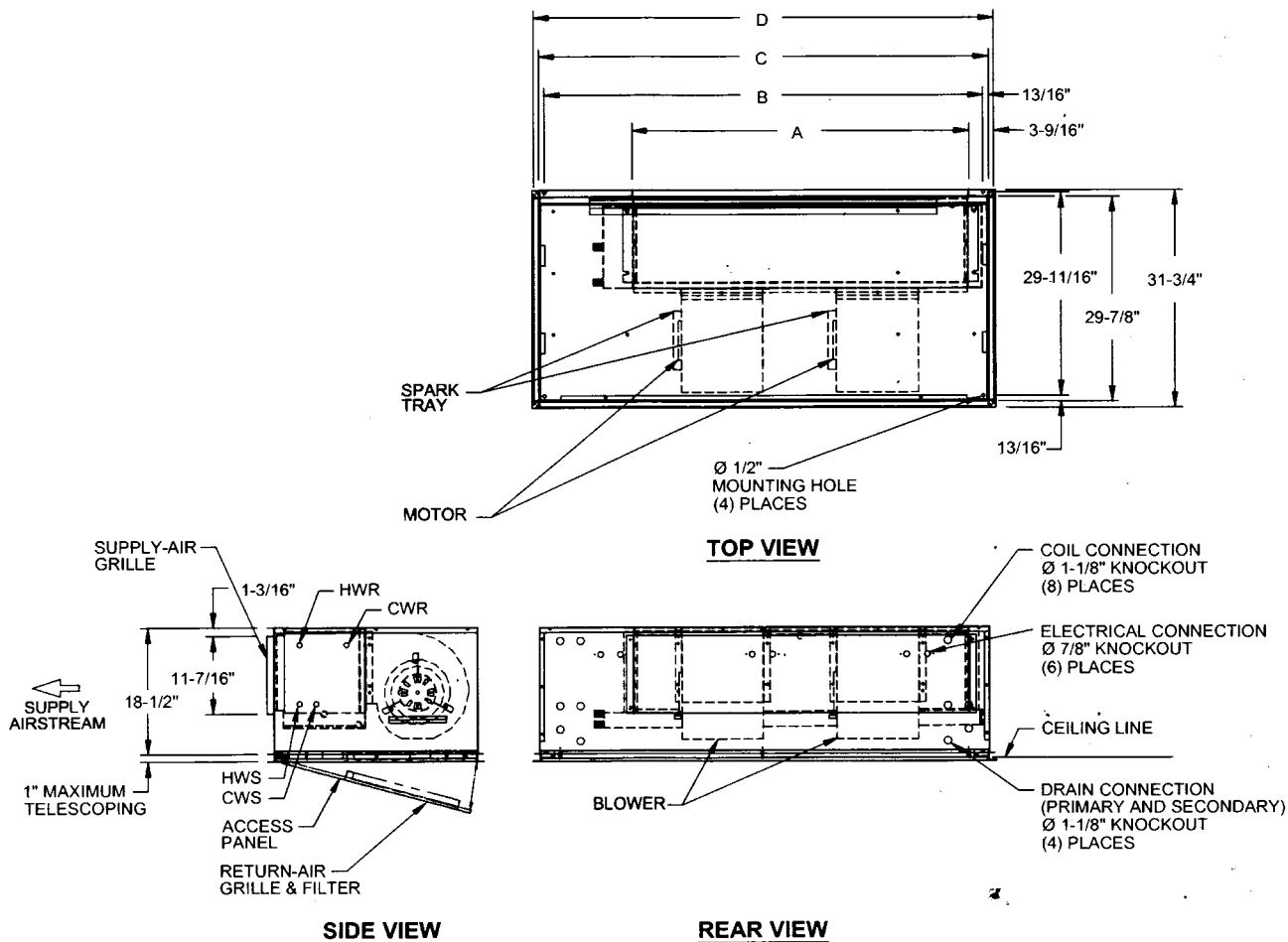
HORIZONTAL FLUSH - HIGH PERFORMANCE - 600-1200 CFM					
MODEL	A	B	C	D	FILTER SIZE
06	15 5/16	44 3/8	46	47 1/2	(2) 12x20x1
08	19 5/16	44 3/8	46	47 1/2	(2) 12x20x1
10	25 5/16	44 3/8	46	47 1/2	(2) 12x20x1
12	31 5/16	52 3/8	54	55 1/2	(2) 12x25x1

Horizontal Flush High Performance Models 06 thru 12

- Right-hand unit shown, left-hand unit opposite.
- Coil connections determined by facing the supply-air opening.
- Electrical junction box is located on the same side as the coil connections.
- Drain pan is powder-coated epoxy with a 1/4" thick closed-cell insulation and has 3/4" NPT primary and secondary drain connections.
- Entire cabinet, scroll and blower wheel are heavy-gauge, galvanized steel.
- Coil connections: 1/2" CW on size 06, 3/4" on sizes 08-12 and 1/2" HW on sizes 06-12

HORIZONTAL HIGH PERFORMANCE - FLUSH

HORIZONTAL FLUSH - BOTTOM RETURN HIGH PERFORMANCE - 1500 TO 2200 CFM - HFHW (WATER) - HFHX (DX)



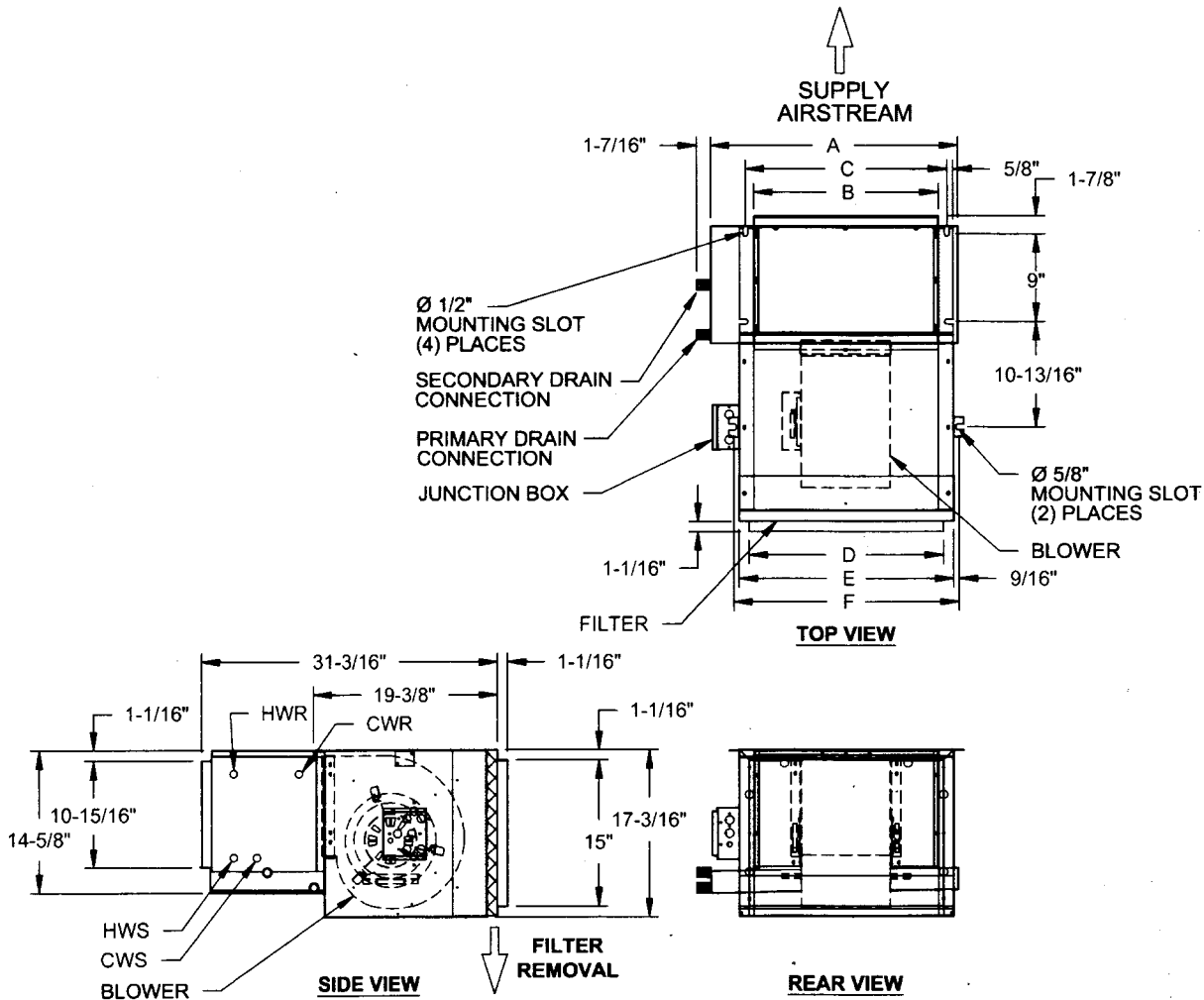
HORIZONTAL FLUSH - HIGH PERFORMANCE - 1500-2200 CFM					
MODEL	A	B	C	D	FILTER SIZE
15	37 5/16	54 3/8	56	57 1/2	(2) 12x25x1
18	43 5/16	58 3/8	60	61 1/2	(3) 12x20x1
22	49 5/16	64 3/8	66	67 1/2	(3) 12x20x1

Horizontal Flush High Performance Models 15 thru 22

- Right-hand unit shown, left-hand unit opposite.
- Coil connections determined by facing the supply-air opening.
- Electrical junction box is located on the same side as the coil connections.
- Drain pan is powder-coated epoxy with a 1/4" thick closed-cell insulation and has 3/4" NPT primary and secondary drain connections.
- Entire cabinet, scroll and blower wheel are heavy-gauge, galvanized steel.
- Coil connections: 3/4" cw on sizes 15-22 and 1/2" HW on sizes 15-22

HORIZONTAL HIGH PERFORMANCE - REAR RETURN

HORIZONTAL REAR RETURN-AIR PLENUM - HIGH PERFORMANCE 600 TO 1200 CFM - HRHW (WATER) - HRHX (DX) - R (REAR RETURN)



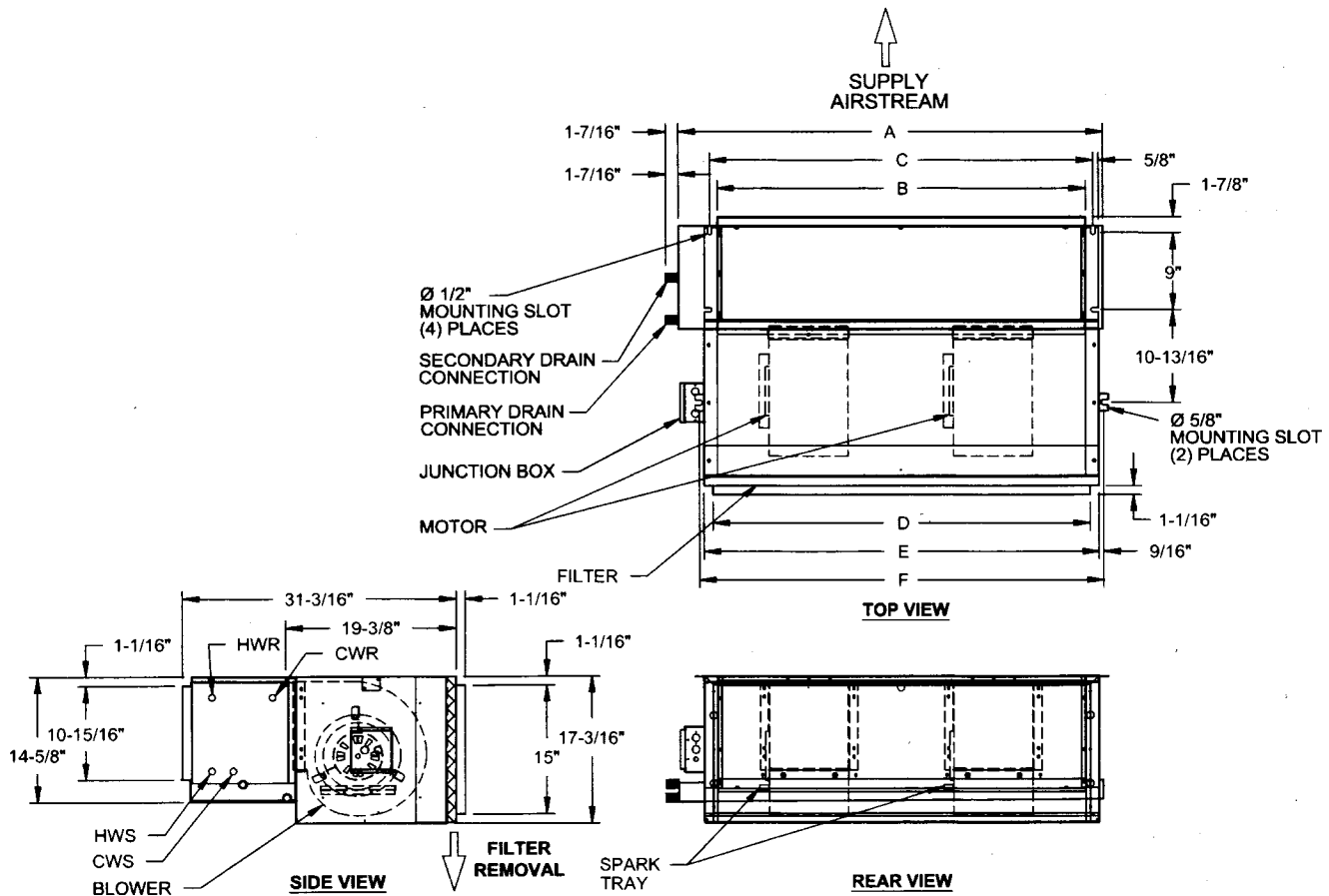
HORIZONTAL BOTTOM RETURN-AIR PLENUM- HIGH PERFORMANCE - 600-1200 CFM							
MODEL	A	B	C	D	E	F	FILTER SIZE
06	21 1/2	15	16	16 1/16	19 3/16	19 3/8	17x18x1
08	25 1/2	19	20	20 1/16	23 3/16	23 3/8	17x22x1
10	31 1/2	25	26	26 1/16	29 3/16	29 3/8	17x28x1
12	37 1/2	31	32	32 1/16	35 3/16	35 3/8	17x34x1

Horizontal Rear Return-Air Plenum Models 06 thru 12

- Right-hand unit shown, left-hand unit opposite.
- Coil connections determined by facing the supply-air opening.
- Electrical junction box is located on the same side as the coil connections.
- Drain pan is powder-coated epoxy with a 1/4" thick closed-cell insulation and has 3/4" NPT primary and secondary drain connections.
- Entire cabinet, scroll and blower wheel are heavy-gauge, galvanized steel.
- Coil connections: 1/2" CW on size 06, 3/4" on sizes 08-12 and 1/2" HW on sizes 06-12

HORIZONTAL HIGH PERFORMANCE - REAR RETURN

HORIZONTAL REAR RETURN-AIR PLENUM - HIGH PERFORMANCE 1500 TO 2200 CFM - HRHW (WATER) - HRHX (DX) - R (REAR RETURN)



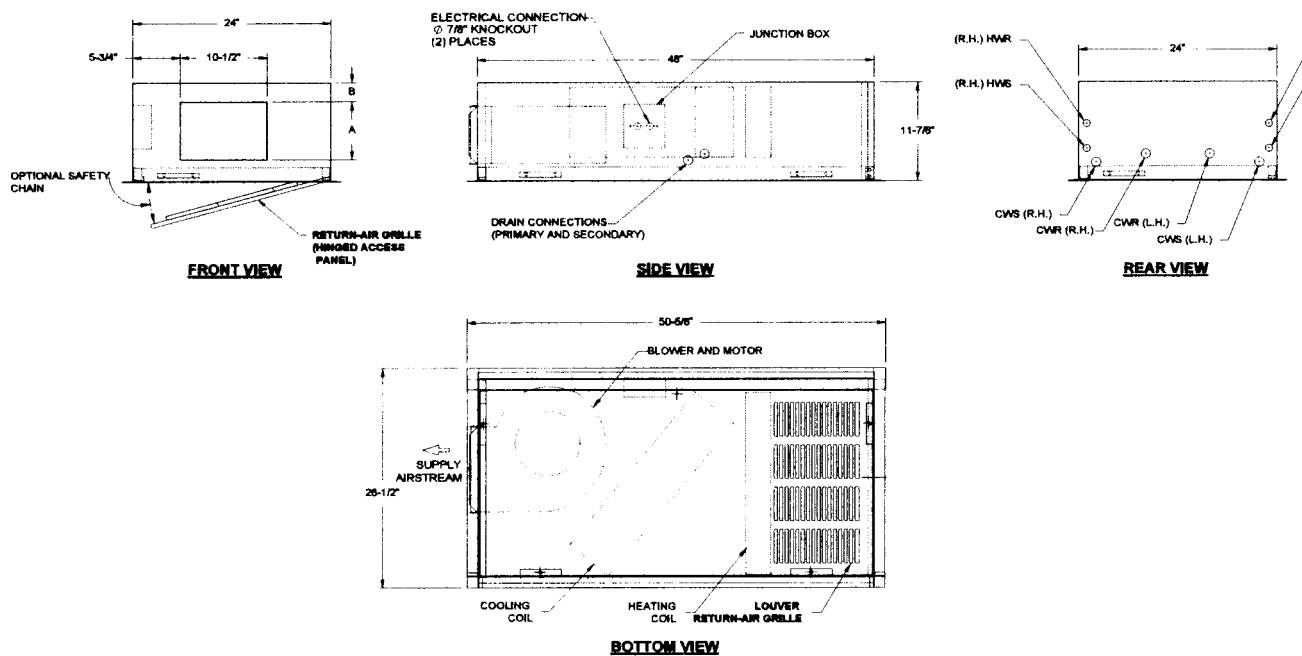
HORIZONTAL BOTTOM RETURN-AIR PLENUM- HIGH PERFORMANCE 1500-2200 CFM							
MODEL	A	B	C	D	E	F	FILTER SIZE
15	43 1/2	37	38 3/4	38 1/16	40 1/8	41 3/16	17x40x1
18	49 1/2	43	44 3/4	44 1/16	46 1/8	47 3/16	17x46x1
22	55 1/2	49	50 3/4	50 1/16	52 1/8	53 3/16	17x52x1

Horizontal Rear Return-Air Plenum High Performance Models 15 thru 22 (Rear)

- Right-hand unit shown, left-hand unit opposite.
- Coil connections determined by facing the supply-air opening.
- Electrical junction box is located on the same side as the coil connections.
- Drain pan is powder-coated epoxy with a 1/4" thick closed-cell insulation and has 3/4" NPT primary and secondary drain connections.
- Entire cabinet, scroll and blower wheel are heavy-gauge, galvanized steel.
- Coil connections: 3/4" cw on sizes 15-22 and 1/2" HW on sizes 15-22

HORIZONTAL HIGH PERFORMANCE - DUCTED FLUSH

HORIZONTAL DUCTED FLUSH - HIGH PERFORMANCE 400 TO 800 CFM - HFHW (WATER) - HFHX (DX)



HORIZONTAL DUCTED FLUSH - HI. PERF. - 600-1200 CFM			
MODEL	A	B	FILTER SIZE
04	7	2	12 X 20
06	8 3/8	2 11/16	12 X 20
08	8 3/8	2 11/16	12 X 20

Horizontal Ducted Flush - High Performance Models 04 thru 08

- Right-hand unit shown, left-hand unit opposite.
- Coil connections determined by facing the supply-air opening.
- Electrical junction box is located on the same side as the coil connections.
- Drain pan is powder-coated epoxy with a 1/4" thick closed-cell insulation and has 3/4" NPT primary and secondary drain connections.
- Entire cabinet, scroll and blower wheel are heavy-gauge, galvanized steel.
- Coil connections: 1/2" CW on size 04-06, 3/4" on sizes 08 and 1/2" HW on sizes 04-08

HORIZONTAL HIGH PERFORMANCE - Weights & Measures

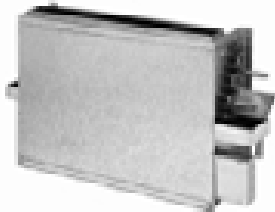
UNIT	MODEL	ROWS	DIMENSIONS/INCHES			WEIGHT/LBS		DIMENSIONS/MILLIMETERS			WEIGHT/kg	
			HEIGHT	WIDTH	DEPTH	DRY	WET	HEIGHT	WIDTH	DEPTH	DRY	WET
DUCTED FLUSH	04	3	12	27	51	180	185	305	686	1295	82	84
	04	4	12	27	51	186	192	305	686	1295	84	87
	06	3	12	27	51	180	185	305	686	1295	82	84
	06	4	12	27	51	186	192	305	686	1295	84	87
	08	3	12	27	51	180	185	305	686	1295	82	84
	08	4	12	27	51	186	192	305	686	1295	84	87
HI-PERFOR. BASIC	06	3	17	22	28	110	114	432	559	711	50	52
	06	4	17	22	28	114	119	432	559	711	52	54
	08	3	17	26	28	120	125	432	661	711	54	57
	08	4	17	26	28	125	132	432	661	711	57	60
	10	3	17	32	28	127	136	432	813	711	58	61
	10	4	17	32	28	132	143	432	813	711	60	64
	12	3	17	38	28	135	143	432	965	711	61	66
	12	4	17	38	28	141	155	432	965	711	64	70
	15	3	17	44	28	190	203	432	1118	711	86	92
	15	4	17	44	28	196	213	432	1118	711	89	97
	18	3	17	50	28	225	241	432	1270	711	102	109
	18	4	17	50	28	232	252	432	1270	711	105	114
HI-PERFOR. RETURN-AIR PLENUM	22	3	17	56	28	245	263	432	1423	711	111	119
	22	4	17	56	28	252	274	432	1423	711	114	124
	06	3	18	22	32	125	129	457	559	813	57	59
	06	4	18	22	32	129	134	457	559	813	58	61
	08	3	18	26	32	135	140	457	661	813	61	64
	08	4	18	26	32	140	147	457	661	813	63	67
	10	3	18	32	32	145	154	457	813	813	66	70
	10	4	18	32	32	150	161	457	813	813	68	73
	12	3	18	38	32	150	161	457	965	813	68	73
	12	4	18	38	32	156	170	457	965	813	71	77
	15	3	18	44	32	210	223	457	1118	813	95	101
	15	4	18	44	32	156	233	457	1118	813	98	106
HI-PERFOR. DELUXE	18	3	18	50	32	250	266	457	1270	813	113	120
	18	4	18	50	32	257	277	457	1270	813	117	125
	22	3	18	56	32	270	288	457	1423	813	122	130
	22	4	18	56	32	277	299	457	1423	813	126	136
	06	3	19	33	32	140	144	483	838	813	64	65
	06	4	19	33	32	144	149	483	838	813	65	68
	08	3	19	37	32	155	160	483	940	813	70	73
	08	4	19	37	32	160	167	483	940	813	72	76
	10	3	19	43	32	165	174	483	1092	813	75	79
	10	4	19	43	32	170	181	483	1092	813	77	82
	12	3	19	49	32	175	186	483	1245	813	79	84
	12	4	19	49	32	181	195	483	1245	813	82	89
HI-PERFOR. FLUSH	15	3	19	55	32	230	243	483	1397	813	104	110
	15	4	19	55	32	236	253	483	1397	813	107	115
	18	3	19	61	32	270	286	483	1549	813	122	130
	18	4	19	61	32	277	297	483	1549	813	126	135
	22	3	19	67	32	290	308	483	1702	813	132	140
	22	4	19	67	32	297	319	483	1702	813	135	145
	06	3	19	48	32	130	134	483	1219	813	59	61
	06	4	19	48	32	134	139	483	1219	813	61	63
	08	3	19	48	32	145	150	483	1219	813	66	68
	08	4	19	48	32	150	157	483	1219	813	68	71
	10	3	19	48	32	150	159	483	1219	813	68	72
	10	4	19	48	32	155	166	483	1219	813	70	75
	12	3	19	56	32	160	171	483	1422	813	73	78
	12	4	19	56	32	166	180	483	1422	813	75	82
	15	3	19	58	32	215	228	483	1473	813	98	104
	15	4	19	58	32	221	238	483	1473	813	100	108
	18	3	19	62	32	255	271	483	1575	813	116	123
	18	4	19	62	32	262	282	483	1575	813	119	128
	22	3	19	68	32	275	293	483	1727	813	125	133
	22	4	19	68	32	282	304	483	1727	813	128	138

NOTE: Consult product catalog for certified dimensional data.

Weights and measures are based on fan coil units only; add approximately 20% for packaging/crating.

VERTICAL- 200 thru 1200 CFM

Vertical Fan Coils from Coil Company



Basic Vertical
200 To 1200 CFM

Basic Vertical Model is a slim compact design for exposed wall mounting. Most commonly installed under windows, the one-piece, wrap-around front panel is easily removed for servicing. Filters are concealed and can be removed without the need for tools.



Deluxe Vertical
200 To 1200 CFM

Deluxe Vertical is the same as the Basic Model installed into a fully cased, soft-white, powder epoxy finish cabinet and designed for exposed wall mounting. Most commonly installed under windows, the one-piece, wrap-around front panel is easily removed for servicing. Filters are concealed and can be removed without the need for tools.

Slope Top Vertical
200 To 1200 CFM



Slope Top Vertical is the same as the Deluxe Model, and the cabinet is designed with a full sloping top. The Vertical Slope Top also features solid side panels so that units may be set side by side for long corridor applications. This unit is ideal for any application in which books or materials are likely to be placed over discharge grilles.

Vertical Wrap Slope Top
200 To 1200 CFM



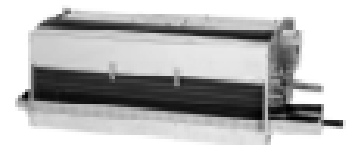
Vertical Wrap Slope Top is our standard Vertical Slope Top with a wrap-around front panel. The cabinet top is flat for three inches out from the wall to accommodate blinds or draperies, then gradually slopes forward. Ideal for hotel, motel and dormitory rooms, this modified cabinet still discourages items being placed over discharge grilles.

Low-Silhouette Vertical Deluxe Top-Discharge
400 To 600 CFM



Low-Silhouette Vertical Deluxe Top-Discharge is similar to the Basic, only specifically designed for exposed under-window applications. The attractive, streamlined cabinetry blends with any room decor and is a favorite of architects and contractors. The cabinet comes with our soft-white, powder-coat epoxy. Also available as Front Discharge and Recessed.

Low-Silhouette Vertical Basic
400 To 600 CFM



Low-Silhouette Vertical Basic is designed for furred-in, under-the-window applications. The Low Silhouette Vertical Basic stands only 15 1/2" high and accommodates a field-furnished and installed decorative enclosure that conceals the unit. The basic unit consists of a chassis, fan deck, drain pan, throwaway filter and a top-discharge duct collar.

VERTICAL- 200 thru 1200 CFM

Shipped with the Features and Options You Want.

VERTICAL FAN COIL STANDARD FEATURES

Coils – 1/2" OD copper tube with aluminum fins (12 FPI) equipped with manual-air vent. DX and steam coils do not include manual-air vent. Coils are 100% underwater pressure tested at 350 PSI with a 300 PSI working pressure.

Cabinet – Heavy-gauge galvanized steel with neoprene-coated 1/2" thick fiberglass insulation with 3.35 PCF density.

Drain Pan – Galvanized and powder coated epoxy with a 1/8" thick closed-cell insulation and has primary and secondary drain connections.

Motors – All motors are 3-speed, 115V/1/60, 208/1/50-60 or 277/1/60 PSC with quick-connect plug.

Discharge Grille – Stamped, louvered on Vertical Slope Top, Wrap Top and Recessed. Black, bar-type on Vertical Front Discharge, Modular and Low Silhouette Deluxe Front Discharge. Multiple, four-way quadrafuser discharge grilles on Vertical Deluxe and Low Silhouette Deluxe.

Filter – One-inch fiberglass, throwaway filter.

Added Features – Designed to be floor- or wall-mounted with six mounting holes provided for wall mounting. Individually tagged, crated and shipped as scheduled for installation.

Certification – UL and cUL approved, ARI certified.

OPTIONAL FEATURES FOR 'BEST IN THE INDUSTRY' FAN/COILS.

Cabinet – Soft-white, powder-coated epoxy cabinet. Deluxe, Front Discharge, Recessed, Slope Top and Modular.

Drain Pans – Stainless steel and double-wall.

Coils – Copper fins/tubes, stainless-steel fins/tubes, phenolic coated, stainless steel end plates. All options are available on one to five- row for Vertical units and one- to three-row for Low Silhouette units.

Insulation – fiberglass, foil-faced, elastomeric and double-wall (solid or perforated) in 1/2" and 1" thickness.

Systems – two or four-pipe, hydronic cooling/heating, steam, DX and/or Electric Heat.

Grilles – eliminate the need for closet doors - available in custom colors.

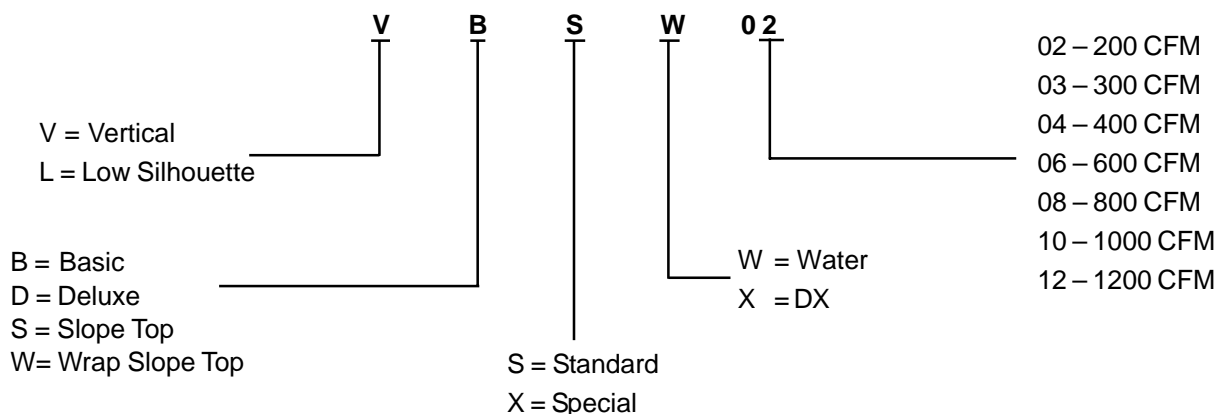
Controls – Unlimited selection of factory-mounted valves and controls.

Filters – Washable and metallic.

Flow-Control Circulator – For water heating applications.

Electric Strip Heat – From 0.5 to 5 kW

VERTICAL FAN COIL NOMENCLATURE



VERTICAL- 200 thru 1200 CFM

ARI CERTIFIED COOLING CAPACITY

Coil Company Vertical Fan Coils have been rated in accordance with ARI Standard 440-2005 for room fan-coils air-conditioners and are certified by the Air-

Conditioning and Refrigeration Institute to meet the following product performance ratings.

ARI APPROVED STANDARD RATINGS						COOLING CAPACITY		POWER INPUT (WATTS)
MODEL / SIZE	MOTOR / TYPE	STYLE	RATED CFM	GPM	WPD (FT./H ₂ O)	TOTAL COOLING (BTUH)	SENSIBLE COOLING (BTUH)	
02	STANDARD	BASIC/RECESSED	230	1.2	0.8	6,080	5,030	106
		ALL OTHERS*	210	1.1	0.7	5,700	4,670	104
03	STANDARD	BASIC/RECESSED	330	1.6	1.1	7,940	6,820	116
		ALL OTHERS*	305	1.5	1.0	7,470	6,370	113
04	STANDARD	BASIC/RECESSED	390	2.5	2.6	12,460	9,480	132
		ALL OTHERS*	350	2.3	2.3	11,380	8,610	118
06	STANDARD	BASIC/RECESSED	550	3.6	5.0	18,020	13,780	146
		ALL OTHERS*	510	3.4	4.5	16,960	12,890	136
08	STANDARD	BASIC/RECESSED	690	5.0	3.9	25,110	18,310	236
		ALL OTHERS*	640	4.7	3.6	23,540	17,090	228
10	STANDARD	BASIC/RECESSED	840	6.4	6.0	31,810	22,770	283
		ALL OTHERS*	790	6.0	5.5	30,110	21,510	273
12	STANDARD	BASIC/RECESSED	980	7.5	7.8	37,440	26,700	316
		ALL OTHERS*	920	7.1	7.5	35,370	25,160	298
LS04	STANDARD	BASIC/RECESSED	405	2.6	3.0	13,220	9,960	123
		DELUXE/FRONT DISCHARGE	370	2.5	2.7	12,260	9,200	119
LS06	STANDARD	BASIC/RECESSED	440	2.8	3.3	14,170	10,730	134
		DELUXE/FRONT DISCHARGE	400	2.6	3.0	13,070	9,850	127

Notes: 1) Based on 80°F DB and 67°F WB EAT, 10°F temperature rise, high fan speed. Motor voltage 115/1/60 power source. Air flow under dry coil conditions. Water pressure drops shown in feet of water.

All units are listed under UL Category Control No. LZFE.

2) Ratings are based on actual CFM. Standard coils for 02-04 & LS-04-06 is 3 rows and 06-12 is 4 rows.

VERTICAL- 200 thru 1200 CFM

HEATING PERFORMANCE

HEATING PERFORMANCE					
MODEL / SIZE	COIL ROWS / (FPI)	RATED CFM	MBH	GPM	WPD (FT. / H ₂ O)
02	1 ROW (12)	245	13.2	0.7	0.6
	2 ROWS (12)	245	23.3	1.2	2.4
03	1 ROW (12)	365	13.6	0.7	0.6
	2 ROWS (12)	365	24.1	1.2	2.5
04	1 ROW (12)	435	20.4	1.0	1.3
	2 ROWS (12)	435	33.1	1.7	5.2
06	1 ROW (12)	710	28.5	1.4	2.3
	2 ROWS (12)	710	44.3	2.2	1.7
08	1 ROW (12)	925	38.2	1.9	4.5
	2 ROWS (12)	925	58.8	2.9	3.1
10	1 ROW (12)	1080	41.6	2.1	1.0
	2 ROWS (12)	1080	71.0	3.5	4.4
12	1 ROW (12)	1290	47.4	2.4	1.3
	2 ROWS (12)	1290	77.5	3.9	2.9
LS04	1 ROW (12)	450	21.1	1.1	1.5
	2 ROWS (12)	450	31.9	1.6	1.0
LS06	1 ROW (12)	665	30.1	2.0	3.6
	2 ROWS (12)	665	47.1	3.2	2.5

Notes: 1) Based on 70°F DB EAT, 180°F EWT, 40°F temperature rise, high fan speed. Motor voltage 115/1/60 power source. Air flow under dry coil conditions. Water pressure drops shown in feet of water.

COIL DATA

Coils are made from 1/2" O.D. copper tubing with .017" wall thickness, and tubes are staggered for maximum heat transfer. A manual air vent is standard on all hydronic coils. DX and steam coils do not include manual-air vent. All coils are 100% underwater pressure tested to 350 PSIG with a 300 PSIG working pressure.

Steam coils are rated for up to 15 PSIG or 250°F.

Coils are available in two-pipe or four-pipe, and from one-row to five-row configurations for Standard models with any combination of chilled or hot water, steam or direct expansion. Custom circuiting is available.

COIL ROWS	LOW SILHOUETTE		STANDARD MODELS						
	04	06	02	03	04	06	08	10	12
SINGLE-ROW COIL	STANDARD								
TWO-ROW COIL									
THREE-ROW COIL									
FOUR-ROW COIL	NOT AVAILABLE		OPTIONAL						
*FIVE-ROW COIL									

*Note: Five-row maximum when selecting a DX coil with a hot water coil.

Coil Options:

- DX - Includes distributor and nozzle, TXV must be field furnished and installed
- Steam - 1-15 PSIG
- Opposite End Connection (E). Place the "E" - pipe-hand connection in the eleventh digit of the model number - when ordering.
- Preheat Coil Position (PREHEAT) - Standard coil is reheat position
- Phenolic Anti-Corrosion Coating (PAC)
- Stainless Steel Tubes/Fins/End Plates
- Copper Fins/Tubes/End Plates
- 6-16 Fins Per Inch (Standard is 12 FPI)

Coil connections on the chilled water side for models 02-06 is 1/2" and 3/4" on models 08-12. The hot water connection is 1/2" on models 02-12.

VERTICAL- 200 thru 1200 CFM

ELECTRIC HEAT

Electric heat may be furnished with either hydronic, direct expansion or steam coils and is factory-mounted, wired and tested. Option-equipped with low-watt density

(for long life) nichrome wire elements. The heater has a built-in, high limit, and fusible link to provide maximum safety.

MODEL / SIZE	KW	0.5	1.0	1.5	2.0	2.5	3.0	3.5	4.0	4.5	5.0
	VOLTAGE	AMPS									
02	115	4.4	8.7	13.0	17.4						
	208	2.4	4.8	7.2	9.6	12.0					
	230	2.2	4.4	6.5	8.7	10.9					
	277	1.8	3.6	5.4	7.2	9.0					
03	115	4.4	8.7	13.0	17.4	21.7					
	208	2.4	4.8	7.2	9.6	12.0					
	230	2.2	4.4	6.5	8.7	10.9					
	277	1.8	3.6	5.4	7.2	9.0					
04	115	4.4	8.7	13.0	17.4	21.7	26.1				
	208	2.4	4.8	7.2	9.6	12.0	14.4	16.8	19.2	21.6	24.0
	230	2.2	4.4	6.5	8.7	10.9	13.0	15.2	17.4	19.6	21.7
	277	1.8	3.6	5.4	7.2	9.0	10.8	12.6	12.6	16.3	18.1
06	115	4.4	8.7	13.0	17.4	21.7	26.1				
	208	2.4	4.8	7.2	9.6	12.0	14.4	16.8	19.2	21.6	24.0
	230	2.2	4.4	6.5	8.7	10.9	13.0	15.2	17.4	19.6	21.7
	277	1.8	3.6	5.4	7.2	9.0	10.8	12.6	12.6	16.3	18.1
08	115	4.4	8.7	13.0	17.4	21.7	26.1				
	208	2.4	4.8	7.2	9.6	12.0	14.4	16.8	19.2	21.6	24.0
	230	2.2	4.4	6.5	8.7	10.9	13.0	15.2	17.4	19.6	21.7
	277	1.8	3.6	5.4	7.2	9.0	10.8	12.6	12.6	16.3	18.1
10	115	4.4	8.7	13.0	17.4	21.7	26.1				
	208	2.4	4.8	7.2	9.6	12.0	14.4	16.8	19.2	21.6	24.0
	230	2.2	4.4	6.5	8.7	10.9	13.0	15.2	17.4	19.6	21.7
	277	1.8	3.6	5.4	7.2	9.0	10.8	12.6	12.6	16.3	18.1
12	115	4.4	8.7	13.0	17.4	21.7	26.1				
	208	2.4	4.8	7.2	9.6	12.0	14.4	16.8	19.2	21.6	24.0
	230	2.2	4.4	6.5	8.7	10.9	13.0	15.2	17.4	19.6	21.7
	277	1.8	3.6	5.4	7.2	9.0	10.8	12.6	12.6	16.3	18.1

AIR FLOW DATA

Air flow shown below is under dry coil conditions.

AIR FLOW DATA		EXTERNAL STATIC PRESSURE																	
SIZE	COIL ROWS	0.00			0.05			0.10			0.15			0.20			0.25		
		HI	MED	LOW	HI	MED	LOW	HI	MED	LOW	HI	MED	LOW	HI	MED	LOW	HI	MED	LOW
02	2 ROW	215	200	165	180	168	140	152	132	117	138	113	101	129	104	95	117	95	79
	3 ROW	210	195	160	175	163	135	147	128	112	133	108	96	124	99	91	112	89	74
03	2 ROW	325	295	250	255	223	190	195	152	135	152	128	115	130	113	105	116	100	99
	3 ROW	320	290	245	250	218	183	190	148	130	147	123	110	125	107	100	111	95	84
04	2 ROW	340	325	295	280	255	225	215	195	160	160	140	125	138	126	115	129	120	111
	3 ROW	335	320	290	275	250	220	210	190	155	155	135	120	133	121	110	125	115	106
06	2 ROW	510	420	315	460	375	275	425	335	235	375	303	201	346	280	193	328	260	187
	3 ROW	500	410	305	450	365	265	415	325	225	365	293	191	336	270	184	317	250	178
08	2 ROW	635	620	315	580	560	275	530	505	235	470	450	200	424	403	193	390	360	187
	3 ROW	625	610	305	570	550	265	520	495	225	460	440	190	414	393	183	379	350	177
10	2 ROW	790	725	455	745	695	405	710	665	370	681	638	340	651	618	312	634	600	312
	3 ROW	780	715	445	735	685	395	700	655	360	671	628	330	641	608	302	624	590	302
12	2 ROW	980	840	675	940	795	635	900	740	610	865	713	586	836	698	572	817	685	566
	3 ROW	965	825	660	925	781	620	885	725	605	850	698	571	821	683	557	802	670	551

VERTICAL- 200 thru 1200 CFM

MOTOR DATA

Motors are wired to a junction box ready for single-point field connection.

Outstanding motor features:

- Quick-Connect Plug
- Permanent Split Capacitor
- Thermal overload protection
- 1050 RPM for lower operating costs
- Oversized bearings and permanently lubricated and sealed
- 122°F maximum operating temperature rise
- Custom motor mounts designed to reduce noise and eliminate vibration
- Stators are epoxy-dipped for more efficient motor cooling

Optional motors:

- 208V-1Ø-60 motors
- 277V-1Ø-60 motors
- 230/220V-1Ø-60 motors
- 50-Hz motors in specified voltages

60 HERTZ SINGLE-PHASE MOTORS (1100) RPM			VOLTAGE / WATTS							
			115V		208V		230V		277V	
MODEL	HP (QTY)	BLOWERS	AMPS	WATTS	AMPS	WATTS	AMPS	WATTS	AMPS	WATTS
02	1/20 (1)	1	0.78	98	0.66	98	0.45	98	1.40	98
03	1/20 (1)	1	1.00	104	0.66	104	0.55	104	0.50	104
04	1/15 (1)	2	1.00	134	0.55	134	0.55	134	0.50	134
06	1/15 (1)	2	1.20	141	0.55	141	0.65	141	0.60	141
08	1/4 (1)	2	2.30	215	1.45	215	1.20	215	1.00	215
10	1/4 (1)	2	2.50	231	1.76	231	1.30	231	1.10	231
12	1/4 (1)	2	3.00	249	2.10	249	1.60	249	1.30	249

60 HERTZ SINGLE-PHASE MOTORS (1100) RPM			VOLTAGE / WATTS							
			115V		208V		230V		277V	
MODEL	HP (QTY)	BLOWERS	AMPS	WATTS	AMPS	WATTS	AMPS	WATTS	AMPS	WATTS
LS-04	1/15 (1)	1	1.00	126	0.55	126	0.50	126	0.50	126
LS-06	1/15 (1)	1	1.30	137	0.66	137	0.60	137	0.70	137

Note: Motor full load amps listed refer to NEC amps. Actual motor nameplate amps may vary.

VERTICAL - 200 thru 1200 CFM

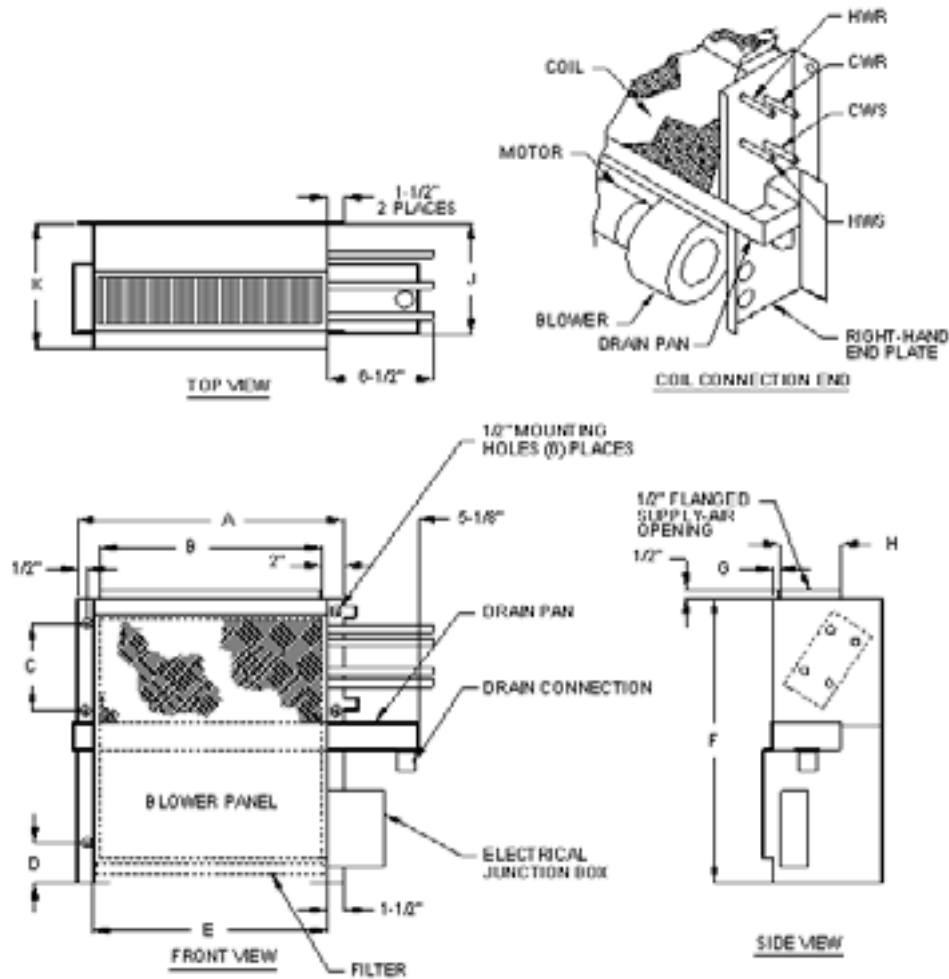
SOUND DATA

MODEL / SIZE	FAN SPEED	OCTAVE BAND						
		2	3	4	5	6	7	8
		CENTER FREQUENCY (CPS)						
		125	250	500	1000	2000	4000	8000
02	HIGH	46.0	47.0	44.0	40.0	36.0	30.0	26.0
	MEDIUM	45.0	45.0	41.0	38.0	32.0	27.0	24.0
	LOW	40.0	41.0	38.0	31.0	25.0	23.0	19.0
03	HIGH	48.0	48.5	46.0	43.0	37.0	32.0	28.0
	MEDIUM	46.0	47.0	44.0	41.0	34.0	29.5	25.5
	LOW	42.0	43.0	40.0	33.5	28.0	24.0	21.0
04	HIGH	50.0	51.0	49.0	45.0	39.0	34.5	29.5
	MEDIUM	48.0	49.5	46.5	42.5	36.5	31.0	27.0
	LOW	43.5	45.0	42.5	39.0	30.5	25.7	22.5
06	HIGH	51.0	52.0	49.5	44.5	38.5	33.0	29.0
	MEDIUM	48.5	50.0	47.0	41.5	37.0	31.5	27.0
	LOW	44.0	45.5	42.5	34.5	30.5	26.0	22.5
08	HIGH	52.0	53.0	47.5	42.5	36.0	31.5	28.0
	MEDIUM	50.5	50.0	46.5	40.0	35.5	29.0	25.0
	LOW	46.0	45.5	42.5	33.2	29.5	24.0	20.5
10	HIGH	51.0	52.5	48.0	42.5	36.5	33.0	29.5
	MEDIUM	49.0	50.0	46.0	42.0	34.0	30.0	26.5
	LOW	44.5	45.5	41.5	35.0	28.2	24.5	22.0
12	HIGH	50.0	51.5	46.0	42.0	36.0	31.5	29.0
	MEDIUM	48.5	49.5	44.0	40.0	33.5	29.0	26.0
	LOW	43.5	45.0	40.0	33.2	27.0	24.0	21.5
LS04	HIGH	49.0	51.0	47.0	43.0	40.0	34.0	27.0
	MEDIUM	46.0	48.0	45.5	41.0	37.0	30.0	24.0
	LOW	42.5	45.0	41.5	38.0	31.0	24.0	22.0
LS06	HIGH	50.0	51.5	48.0	43.0	36.0	31.0	27.5
	MEDIUM	48.0	47.0	46.0	39.0	35.5	30.0	25.0
	LOW	43.0	45.0	42.0	32.0	27.0	26.0	21.0

- Notes:
- 1) Power levels are in dB RE 10-12 watts.
 - 2) Sound data tested in accordance with ASHRE Standard 68 and ARI Standard 260 and 350.
 - 3) Ratings are based on actual CFM. Standard coils for 02-04 and LS04 is 3-row and 06-12 and LS06 is 4 rows.
 - 4) Air Flow under dry coil conditions.

VERTICAL- 200 thru 1200 CFM

VERTICAL BASIC - 200 TO 1200 CFM - VBSW (WATER) - VBSX (DX)



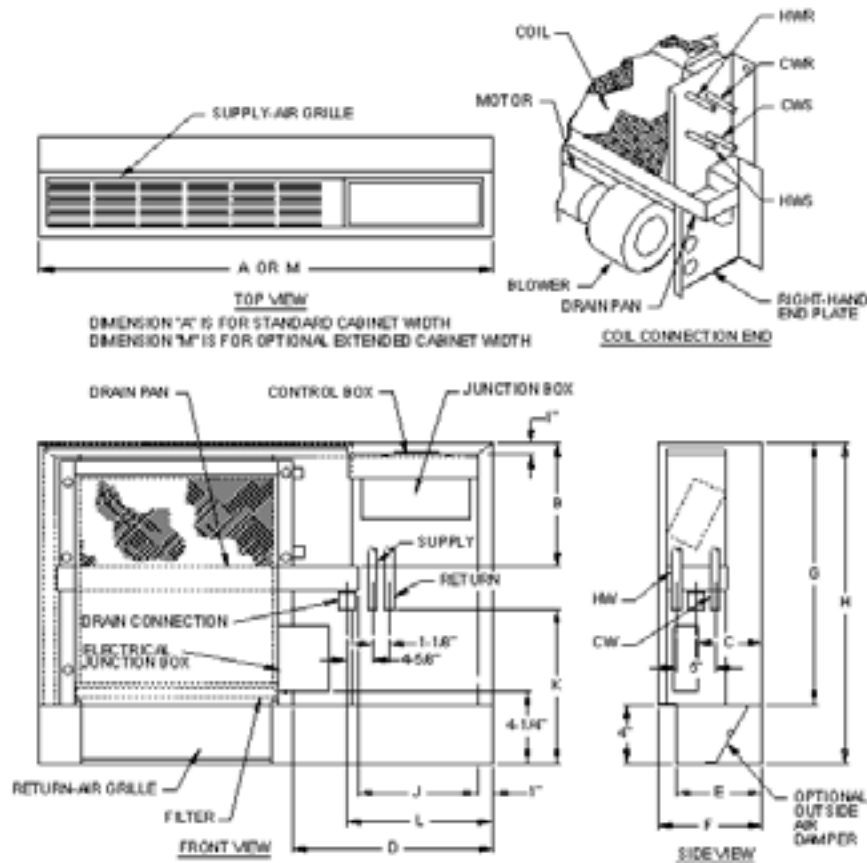
VERTICAL BASIC 200-1200 CFM											
MODEL	A	B	C	D	E	F	G	H	J	K	FILTER
02	20	16	N/A	3 1/4	20	22	1/4	4	9 1/2	10	10x20x1
03	20	16	N/A	3 1/4	20	22	1/4	4	9 1/2	10	10x20x1
04	31	27	N/A	3 1/4	31	22	1/4	4	9 1/2	10	10x31x1
06	36	32	N/A	3 1/4	36	22	1/4	4	9 1/2	10	10x36x1
08	37	33	10 1/4	3	34	25 1/2	1/4	5 1/2	11	11	11x34x1
10	41	37	10 1/4	3	38	25 1/2	1/4	5 1/2	11	11	11x38x1
12	45	41	10 1/4	3	42	25 1/2	1/4	5 1/2	11	11	11x42x1

Vertical Basic Models 02 thru 12.

- Right-hand unit shown, left-hand unit opposite.
- Coil connections determined by facing the front access panel.
- Electrical junction box is located on the same side as the coil connections.
- Drain pan is powder-coated epoxy with a 1/4" thick closed-cell insulation and has 3/4" drain connections.
- Entire cabinet, scroll and blower wheel are heavy-gauge, galvanized steel.
- Coil connections: 1/2" CW on model 02-06. 3/4" on 08-12 and 1/2" HW on 02-12.

VERTICAL - 200 thru 1200 CFM

VERTICAL DELUXE - 200-1200 CFM - VDSW (WATER) - VDSX (DX)



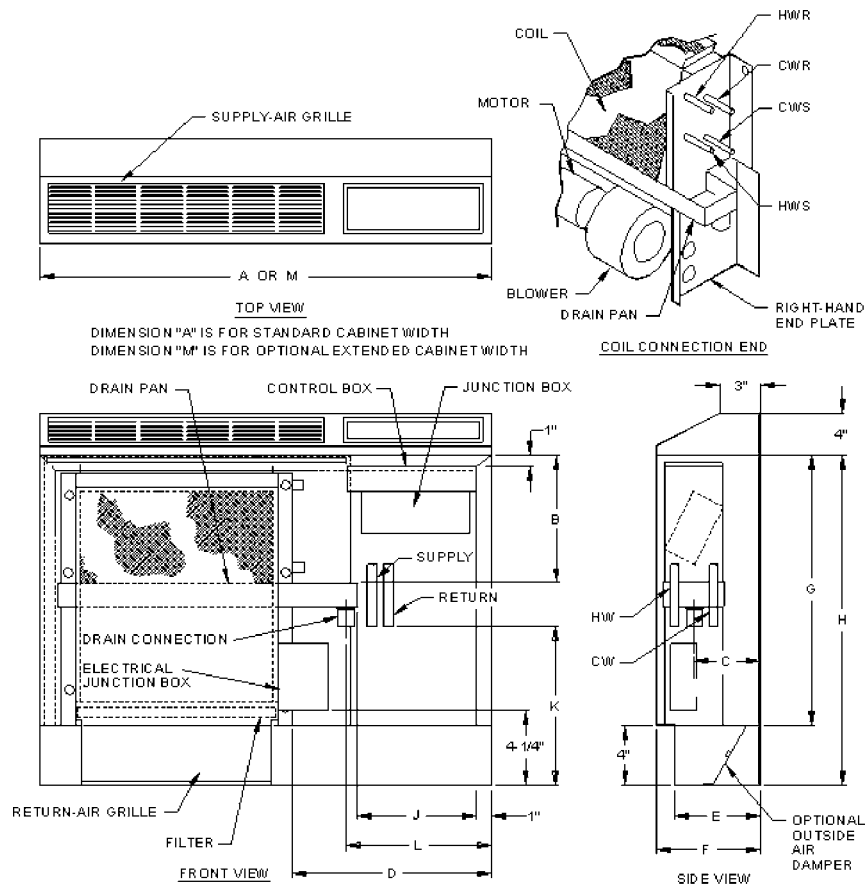
VERTICAL WRAP SLOPE TOP 200-1200 CFM													
MODEL	A	B	C	D	E	F	G	H	J	K	L	M	FILTER SIZE
02	35 1/4	11 3/8	6 3/4	14 1/8	8	11 1/4	22	26	7 7/8	10	9 5/8	40 7/8	10x20x1
03	35 1/4	11 3/8	6 3/4	14 1/8	8	11 1/4	22	26	7 7/8	10	9 5/8	40 7/8	10x20x1
04	52 1/8	11 3/8	7	18 1/2	8	11 1/4	22	26	13 7/8	10	15 3/4	57 3/4	10x31x1
06	52 1/8	11 3/8	7	13 1/4	8	11 1/4	22	26	8 3/4	10	10 1/2	57 3/4	10x36x1
08	57 3/4	13 5/8	8 1/2	18 1/8	10	12	26	30	13 3/8	11 7/8	15 1/8	63 3/8	11x34x1
10	57 3/4	13 5/8	8 1/2	14 1/8	10	12	26	30	9 3/8	11 7/8	11 1/8	63 3/8	11x38x1
12	69	13 5/8	8 3/4	21 1/4	10	12	26	30	16 3/4	11 7/8	18 1/2	66	11x42x1

Vertical Deluxe Models 02 thru 12.

- Right-hand unit shown, left-hand unit opposite.
- Coil connections determined by facing the front access panel.
- Electrical junction box is located on the same side as the coil connections.
- Drain pan is powder-coated epoxy with a 1/4" thick closed-cell insulation and has 3/4" drain connections.
- Entire cabinet, scroll and blower wheel are heavy-gauge, galvanized steel.
- Coil connections: 1/2" CW on model 02-06. 3/4" on 08-12 and 1/2" HW on 02-12.

VERTICAL- 200 thru 1200 CFM

VERTICAL SLOPE TOP - 200-1200 CFM - VSSW (WATER) - VSSX (DX)



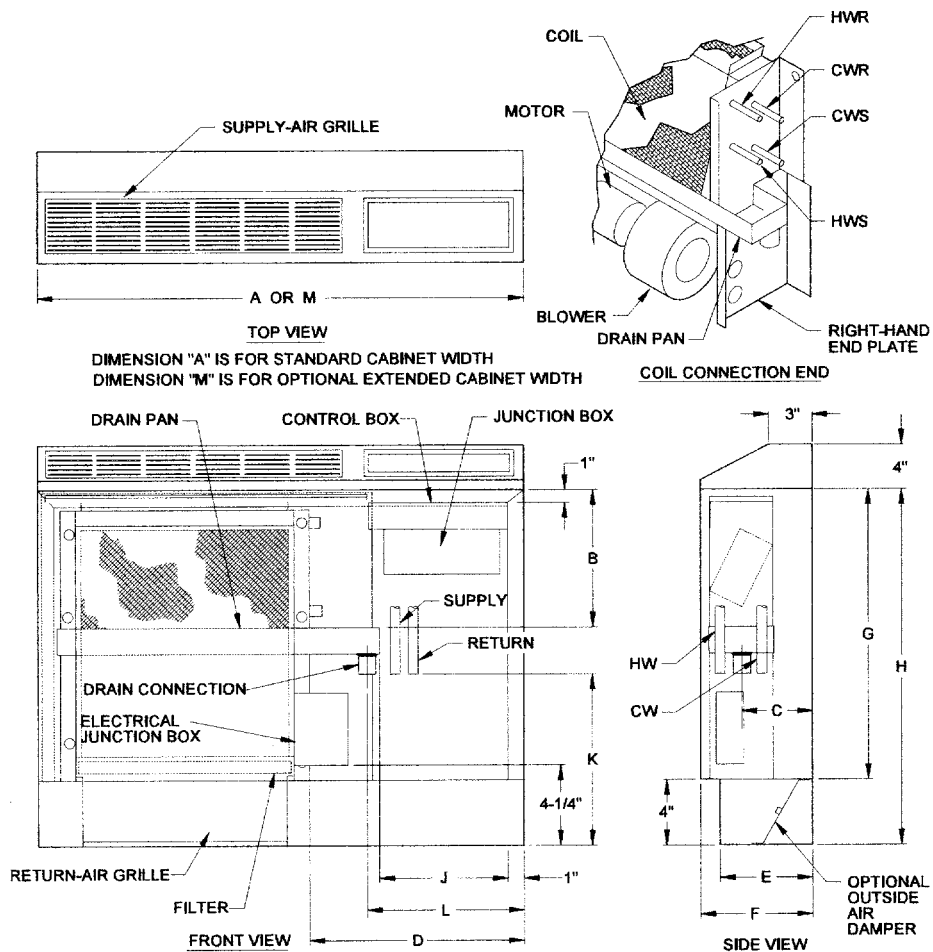
VERTICAL SLOPE TOP 200-1200 CFM												
MODEL	A	B	C	D	E	F	G	H	J	K	M	FILTER SIZE
02	35 1/4	11 3/8	6 3/4	14 1/8	8	11 1/4	30	7 7/8	10	9 5/8	40 7/8	10x20x1
03	35 1/4	11 3/8	6 3/4	14 1/8	8	11 1/4	30	7 7/8	10	9 5/8	40 7/8	10x20x1
04	52 1/8	11 3/8	6 3/4	18 1/2	8	11 1/4	30	13 7/8	10	15 3/4	57 3/4	10x31x1
06	52 1/8	11 3/8	6 3/4	13 1/4	8	11 1/4	30	8 3/4	10	10 1/2	57 3/4	10x36x1
08	57 3/4	14 5/8	8 1/2	18 1/8	10	12	34	13 3/8	11 7/8	15 1/8	63 3/8	11x34x1
10	57 3/4	14 5/8	8 1/2	14 1/8	10	12	34	9 3/8	11 7/8	11 1/8	63 3/8	11x38x1
12	69	14 5/8	8 3/4	21 1/4	10	12	34	16 3/4	11 7/8	18 1/2	66	11x42x1

Vertical Slope Top Models 02 thru 12.

- Right-hand unit shown, left-hand unit opposite.
- Coil connections determined by facing the front access panel.
- Electrical junction box is located on the same side as the coil connections.
- Drain pan is powder-coated epoxy with a 1/4" thick closed-cell insulation and has 3/4" drain connections.
- Entire cabinet, scroll and blower wheel are heavy-gauge, galvanized steel.
- Coil connections: 1/2" CW on model 02-06. 3/4" on 08-12 and 1/2" HW on 02-12.

VERTICAL - 200 thru 1200 CFM

VERTICAL WRAP SLOPE TOP - 200-1200 CFM - VWSW (WATER) - VWSX (DX)



VERTICAL WRAP SLOPE TOP 200-1200 CFM

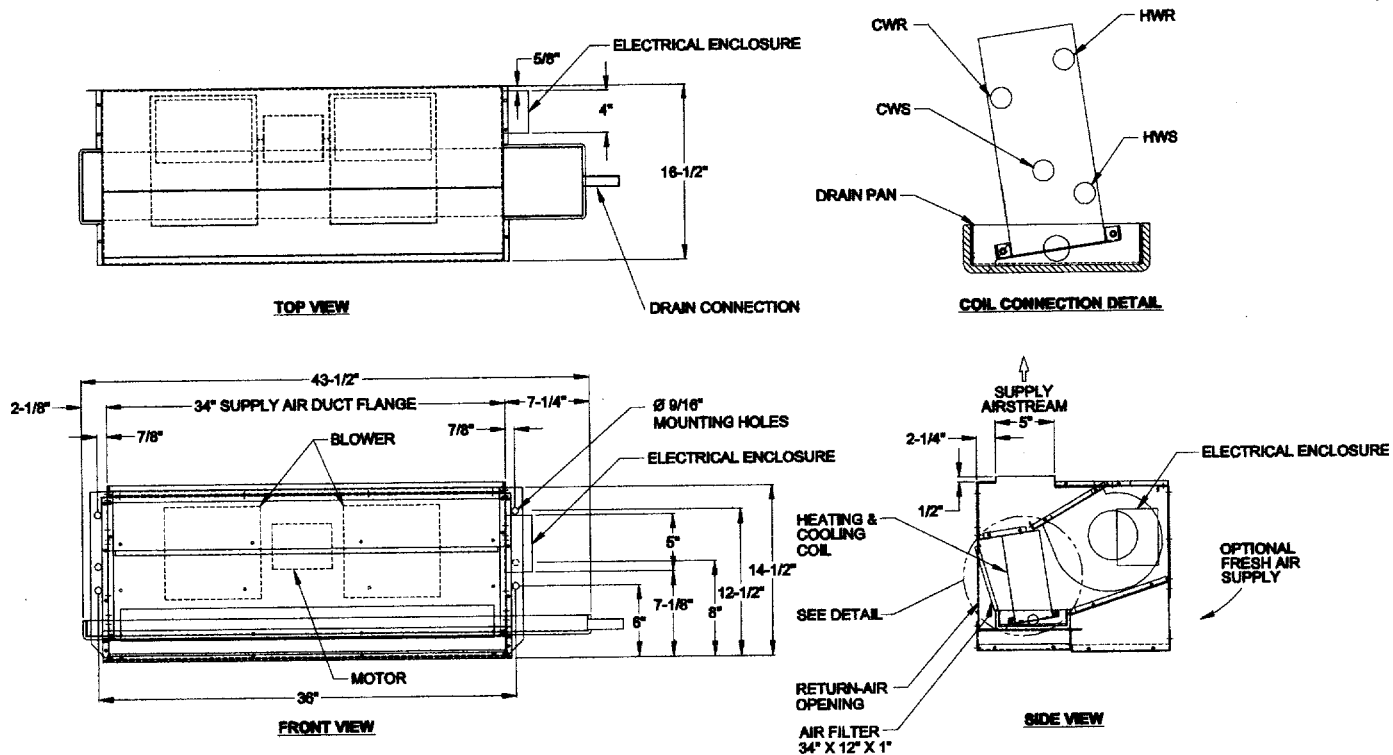
MODEL	A	B	C	D	E	F	G	H	J	K	L	M	FILTER SIZE
02	35 1/4	11 3/8	6 3/4	14 1/8	8	11 1/4	22	26	7 7/8	10	9 5/8	40 7/8	10x20x1
03	35 1/4	11 3/8	6 3/4	14 1/8	8	11 1/4	22	26	7 7/8	10	9 5/8	40 7/8	10x20x1
04	52 1/8	11 3/8	7	18 1/2	8	11 1/4	22	26	13 7/8	10	15 3/4	57 3/4	10x31x1
06	52 1/8	11 3/8	7	13 1/4	8	11 1/4	22	26	8 3/4	10	10 1/2	57 3/4	10x36x1
08	57 3/4	13 5/8	8 1/2	18 1/8	10	12	26	30	13 3/8	11 7/8	15 1/8	63 3/8	11x34x1
10	57 3/4	13 5/8	8 1/2	14 1/8	10	12	26	30	9 3/8	11 7/8	11 1/8	63 3/8	11x38x1
12	69	13 5/8	8 3/4	21 1/4	10	12	26	30	16 3/4	11 7/8	18 1/2	66	11x42x1

Vertical Slope Top Models.

- Right-hand unit shown, left-hand unit opposite.
- Coil connections determined by facing the front access panel.
- Electrical junction box is located on the same side as the coil connections.
- Drain pan is powder-coated epoxy with a 1/4" thick closed-cell insulation and has 3/4" drain connections.
- Entire cabinet, scroll and blower wheel are heavy-gauge, galvanized steel.
- Coil connections: 1/2" CW on model 02-06. 3/4" on 08-12 and 1/2" HW on 02-12.

VERTICAL - 200 thru 1200 CFM

VERTICAL LOW-SILHOUETTE BASIC - 400-600 CFM - LBSW (WATER) - LBSX (DX)

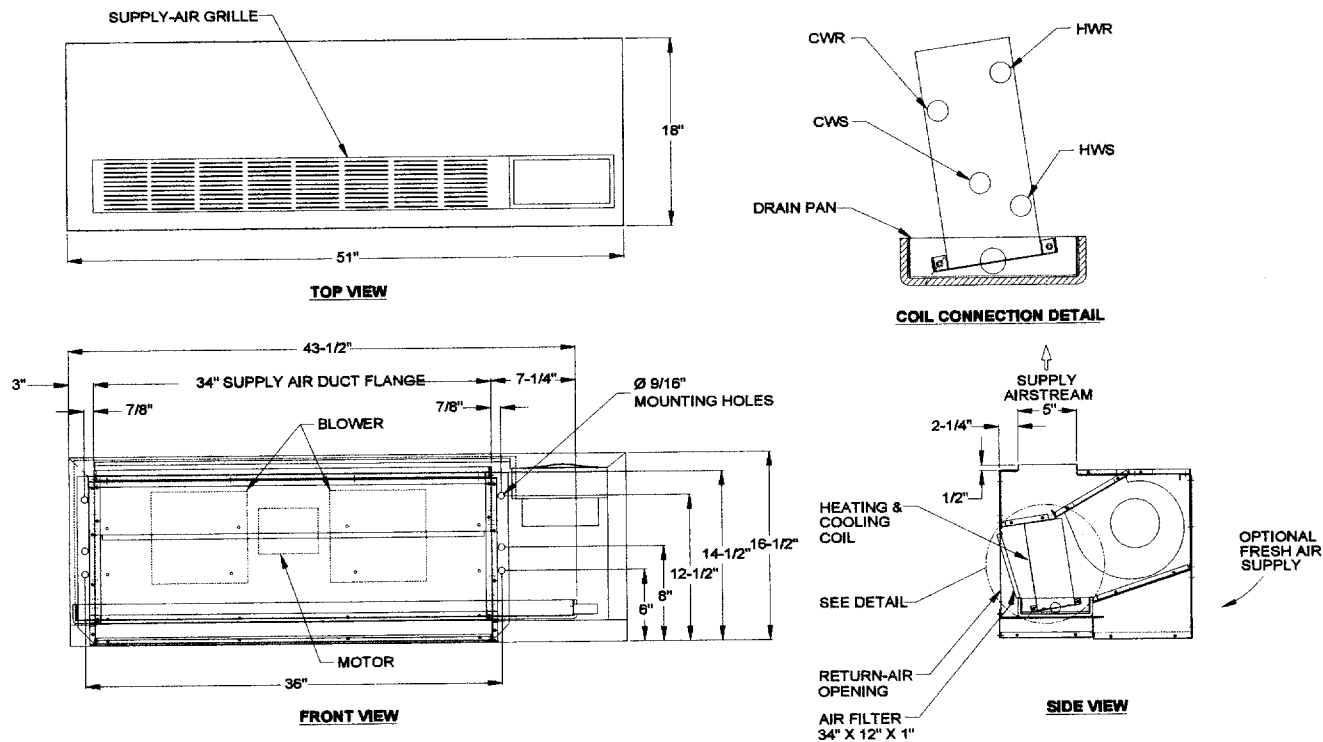


Vertical Low-Silhouette Models 04 thru 06.

- Right-hand unit shown, left-hand unit opposite.
- Coil connections determined by facing the front access panel.
- Electrical junction box is located on the same side as the coil connections.
- Drain pan is powder-coated epoxy with a 1/4" thick closed-cell insulation and has 3/4" drain connections.
- Entire cabinet, scroll and blower wheel are heavy-gauge, galvanized steel.
- Coil connections: 1/2" CW on model 04-06.

VERTICAL- 200 thru 1200 CFM

VERTICAL LOW-SILHOUETTE DELUXE - 400-600 CFM - LDSW (WATER) - LDSX (DX)



Vertical Low-Silhouette Deluxe Models 04 thru 06.

- Right-hand unit shown, left-hand unit opposite.
- Coil connections determined by facing the front access panel.
- Electrical junction box is located on the same side as the coil connections.
- Drain pan is powder-coated epoxy with a 1/4" thick closed-cell insulation and has 3/4" drain connections.
- Entire cabinet, scroll and blower wheel are heavy-gauge, galvanized steel.
- Coil connections: 1/2" CW on model 04-06.

VERTICAL - 200 thru 1200 CFM

VERTICAL BASIC - DELUXE - SLOPE TOP - WRAP SLOPE TOP

The following Vertical Fan Coil weights and measures are based on fan coil units only. Add approximately 20% for packaging and crating.

	MODEL	ROWS	DIMENSIONS - INCHES			POUNDS		DIMENSIONS - MILLIMETERS			KILOGRAMS	
			HEIGHT	WIDTH	DEPTH	DRY	WET	HEIGHT	WIDTH	DEPTH	DRY	WET
STANDARD BASIC	02	3	23	26	10	84	86	584	661	254	38	39
		2	23	26	10	89	92	584	661	254	40	42
	03	3	23	26	10	84	86	584	661	254	38	39
		2	23	26	10	89	92	584	661	254	40	42
	04	3	23	37	10	117	123	584	940	254	53	56
		4	23	37	10	123	130	584	940	254	56	59
	06	3	23	42	10	130	136	584	1067	254	59	62
		4	23	42	10	136	144	584	1067	254	62	65
	08	3	26	43	11	184	190	660	1092	280	83	86
		4	26	43	11	190	198	660	1092	280	86	90
	10	3	26	47	11	200	207	660	1194	280	91	94
		4	26	47	11	206	216	660	1194	280	94	98
STANDARD DELUXE	02	3	26	36	12	140	142	660	915	305	38	65
		2	26	36	12	145	148	660	915	305	40	67
	03	3	26	36	12	140	142	660	915	305	38	65
		2	26	36	12	145	148	660	915	305	40	67
	04	3	26	53	12	195	201	660	1346	305	53	91
		4	26	53	12	201	208	660	1346	305	56	94
	06	3	26	53	12	205	211	660	1346	305	59	96
		4	26	53	12	211	319	660	1346	305	62	99
	08	3	30	58	12	253	259	762	1473	305	83	117
		4	30	58	12	259	267	762	1473	305	86	121
	10	3	30	58	12	263	270	762	1473	305	91	122
		4	30	58	12	269	279	762	1473	305	94	126
STANDARD SLOPE TOP	02	3	30	36	12	140	142	762	915	305	64	65
		2	30	36	12	145	148	762	915	305	66	67
	03	3	30	36	12	140	142	762	915	305	64	65
		2	30	36	12	145	148	762	915	305	66	67
	04	3	30	53	12	195	201	762	1346	305	88	91
		4	30	53	12	201	208	762	1346	305	91	94
	06	3	30	53	12	205	211	762	1346	305	93	96
		4	30	53	12	211	219	762	1346	305	96	99
	08	3	34	58	13	253	259	864	1473	330	115	117
		4	34	58	13	259	267	864	1473	330	118	121
	10	3	34	58	13	263	270	864	1473	330	119	122
		4	34	58	13	269	279	864	1473	330	122	126
STANDARD WRAP SLOPE TOP	02	3	33	36	12	140	142	838	915	305	64	65
		2	33	36	12	145	148	838	915	305	66	67
	03	3	33	36	12	140	142	838	915	305	64	65
		2	33	36	12	145	148	838	915	305	66	67
	04	3	33	53	12	195	201	838	1346	305	88	91
		4	33	53	12	201	208	838	1346	305	91	94
	06	3	33	53	12	205	211	838	1346	305	93	96
		4	33	53	12	211	219	838	1346	305	96	99
	08	3	37	58	12	253	259	940	1473	305	115	117
		4	37	58	12	259	267	940	1473	305	118	121
	10	3	37	58	12	263	270	940	1473	305	119	122
		4	37	58	12	269	279	940	1473	305	122	126
STANDARD WRAP SLOPE TOP	12	3	37	69	12	300	308	940	1753	305	136	140
		4	37	69	12	307	318	940	1753	305	139	144

VERTICAL- 200 thru 1200 CFM

LOW SILHOUETTE

The following Vertical Fan Coil weights and measures are based on fan coil units only. Add approximately 20% for packaging and crating.

LOW SILHOUETTE BASIC	04	2	15	44	17	110	114	381	1118	432	50	52
		3	15	44	17	116	121	381	1118	432	53	55
	06	2	15	44	17	110	114	381	1118	432	50	52
		3	15	44	17	116	122	381	1118	432	53	55
LOW SILHOUETTE DELUXE	04	2	17	51	18	140	144	432	1296	457	64	65
		3	17	51	18	146	151	432	1296	457	66	69
	06	2	17	51	18	142	146	432	1296	457	64	66
		3	17	51	18	148	154	432	1296	457	67	70
LOW SILHOUETTE FRONT DISCHARGE	04	2	17	51	18	140	144	432	1296	457	64	65
		3	17	51	18	146	151	432	1296	457	66	69
	06	2	17	51	18	142	146	432	1296	457	64	66
		3	17	51	18	148	154	432	1296	457	67	70
LOW SILHOUETTE RECESSED	04	2	16	45	18	135	139	407	1143	457	61	63
		3	16	45	18	141	146	407	1143	457	64	66
	06	2	16	45	18	135	139	407	1143	457	61	63
		3	16	45	18	141	147	407	1143	457	64	67

VERTICAL - 200 thru 1200 CFM

GENERAL

Furnish and install Coil Company Vertical Direct Drive Fan Coil Units as indicated on the plans and in the specifications. Units shall be completely factory-assembled, tested and shipped as one piece. All units shall be capable of meeting or exceeding the scheduled capacities for cooling, heating and air delivery. All unit dimensions for each model and size shall be considered maximums. Units shall be UL listed and also in compliance with UL/ANSI Standard 1995, and be certified as complying with the latest edition of ARI Standard 440.

CONSTRUCTION

All unit chassis shall be fabricated of heavy gauge galvanized steel panels able to meet 125-hour salt spray test per ASTM B-117. All exterior panels shall be insulated with 1/2" thick, 3.35 pound per cubic foot, dual density fiberglass insulation rated for a maximum air velocity of 3600 f.p.m. Insulation shall conform to UL 181 for erosion and NFPA 90A and 90B for flame spread (25) and smoke developed (50) rating per ASTM E-84 and UL 723 and CAN./ULC, S102-M88.

All exposed units shall have exterior panels fabricated of not less than 18-gauge galvanized steel. The front panel of recessed units shall be attached with quarter-turn quick open fasteners to allow for easy removal and access for service.

OPTION: Provide a 16-gauge front panel on exposed units

Slope Top and recessed units shall include a recessed stamped louver discharge grille.

OPTION: Provide an architectural grade single deflection discharge grille with a powder-coated paint finish to match cabinet color.

OPTION: Provide an architectural grade bar discharge grille with a powder-coated paint finish to match cabinet color.

OPTION: Provide foil-faced insulation in lieu of standard. Foil insulation shall meet or exceed the requirements stated above, and in addition, meet ASTM Standards C665 and C-1136 for biological growth in insulation. Insulation shall be lined with aluminum foil, fiberglass scrim reinforcement, and 30-pound kraft paper laminated together with a flame resistant adhesive. All exposed edges shall be sealed to prevent any fibers from reaching the air stream.

OPTION: Provide Elastometric Closed Cell Foam Insulation in lieu of standard. Insulation shall conform to UL 181 for erosion and NFPA 90A for fire, smoke and melting, and comply with a 25/50 Flame Spread and Smoke Developed Index per ASTM E-84 or UL 723. Additionally, insulation shall comply with Antimicrobial Performance Rating of zero, no observed growth, per ASTM G21. Polyethylene insulation is not acceptable.

Unit mounting shall be to the wall through 1/2" holes in four locations in the back of the unit.

PAINTED FINISH

All exposed cabinet exterior panels shall be finished with a soft-white powder coated epoxy finish.

SOUND

Units shall have published sound power level data tested in accordance with ARI Standard 350-2000.

FAN/DRAIN PAN ASSEMBLY

Unit fan shall be dynamically balanced, forwardly curved, DWDI centrifugal type constructed of heavy gauge zinc coated galvanized steel for corrosion resistance. Motors shall be high efficiency, permanently lubricated sleeve bearing, permanent split-capacitor type with UL and C-UL listed automatic reset thermal overload protection and three separate horsepower taps. Single speed motors are not acceptable.

Primary condensate drain pans shall be single wall, heavy gauge, galvanized steel for corrosion resistance and extend under the entire coil section. Drain pans shall be of one-piece construction and be positively sloped for condensate removal.

The drain pan shall be externally insulated with a fire retardant, closed cell foam insulation. The insulation shall carry no more than a 25/50 Flame Spread and Smoke Developed Rating per ASTM E-84 and UL 723 and fungi resistant per ASTM G21/C1338, bacteria resistant per ASTM G22 and mold growth per UL 181. The fan/drain pan assembly shall be removed and serviced through the front panel. The entire assembly shall be able to come out of the unit easily by removing two wing nuts and unplugging the motor.

OPTION: Provide a primary drain pan constructed entirely of heavy gauge type 304 stainless steel for superior corrosion resistance. Stainless steel drain pans shall be externally insulated and meet or exceed the requirements stated above.

OPTION: Devices used to energize and de-energize (switch) fan speeds must be totally silent. Mercury and/or quiet relays and/or contactors are not acceptable.

VERTICAL- 200 thru 1200 CFM

COILS

All cooling and heating coils shall optimize rows and fins per inch to meet the specified capacity. Coils shall have seamless copper tubes and shall be mechanically expanded to provide an efficient, permanent bond between the tube and fin.

Fins shall have high efficiency aluminum surface optimized for heat transfer, air pressure drop and carryover.

All coils shall be tested at 350 PSIG air pressure under water, and rated for a maximum of 300 PSIG working pressure at 180°F maximum water temperature. Heating coils shall be furnished in the reheat position as standard.

Direct expansion cooling coils shall include a fixed orifice distributor and nozzle.

Steam coils shall be standard single tube steam type suitable for temperatures above 35°F and 15 PSIG maximum working pressure.

All coils shall be provided with a manual-air vent fitting to allow for coil venting.

OPTION: Provide automatic air vents in lieu of manual-air vents.

FILTERS

All units shall be furnished with a minimum 1" nominal glass fiber throwaway filter. Filters shall be tight fitting to prevent air bypass. Filters shall be easily removable from the return-air opening without the need for tools or removal of the front panel.

OPTION: Provide unit with 1" pleated filter (MERV 6).

OPTION: Provide a decorative stamped louver grille in the return-air opening.

ELECTRICAL

Units shall be furnished with single point power connection. Provide an electrical junction box with for motor and other electrical terminations, termination or wiring connections in accordance with wiring diagram supplied with the unit.

ELECTRIC HEAT

Furnish an electric resistance heating assembly as an integral part of the fan coil unit, with the heating capacity, voltage and kilowatts scheduled. The heater assembly shall be rated for installation on the fan coil unit and be located so as to not expose the fan assembly to excessive leaving air temperatures that could affect motor performance.

The heater and unit assembly shall be listed for zero clearance and meet all NEC requirements, and be UL listed with the unit as an assembly in compliance with UL/ANSI Standard 1995.

All internal wiring shall be rated for 90°C minimum.

All heaters shall include over-temperature protection consisting of an automatic reset primary thermal limit and back up secondary thermal limit. All heaters shall be single stage.

All heaters shall be provided with an incoming line power distribution block designated to accept single point power wiring capable of carrying 125% of the calculated load current.

OPTION: Devices used to energize and de-energize (switch) electric heat must be totally silent. Mercury and/or quiet relays and/or contactors are not acceptable.

PIPING PACKAGES

Provide a factory assembled valve piping package to consist of a 2 or 3 way, on/off, motorized electric control valve and two ball isolation valves. Control valves are piped normally closed to the coil. Maximum entering water temperature on the control valve is 180°F, and maximum close-off pressure is 75 PSIG (1/2") or 50 PSIG (3/4"). Maximum operating pressure shall be 300 PSIG.

OPTION: Provide 3-wire floating point modulating control valve in lieu of 2-position control valve with factory assembled valve piping package.

OPTION: Provide either a fixed or adjustable flow control device for each piping package.

OPTION: Provide pressure-temperature ports for each piping package.

Piping packages are shipped installed on all units and can be shipped separately by request only.

OUTSIDE AIR DAMPER

Provide a manual or two position motorized outside air damper integral to the unit.

OPTION: Provide an aluminum outside air wall box with louvers and integral bug screen and weep holes for field installation as indicated in catalog.

WARRANTY

COIL COMPANY WARRANTS TO THE ORIGINAL OWNER/USER OF THE COIL COMPANY UNIT IDENTIFIED ABOVE TO BE FREE OF ORIGINAL DEFECTS IN MATERIAL OR WORKMANSHIP FOR A PERIOD OF ONE YEAR FROM THE EFFECTIVE DATE OF THIS WARRANTY.

The Warranty extends for twelve (12) months from date of start-up, but no longer than eighteen (18) months from the date of shipment. The warranty does not include the filter.

This Warranty on the units obligates Coil Company to repair or replace, free of charge, any part or parts that show evidence of being defective in material and workmanship and are deemed so defective by personnel of Coil Company. The part must be returned for replacement with the proper information as required.

Coil Company assumes no obligation for labor required to replace the defective part or parts nor the freight or postage required to return or to secure the part which shall be at the cost and expense of the Original Owner/User. Warranty does not include breakage or rupture of water tubing and/or water condenser coil when subjected to freezing temperatures.

Coil Company, will replace the defective part or parts within 21 days after the return to the Coil Company of such defective part or parts provided notice of such defect was given by Original Owner/User within the Warranty period.

An optional, additional four-year protection plan on the compressor is available at modest cost at the time of original unit sale only. This obligates Coil Company to replace f.o.b. factory, a defective compressor with a comparable compressor of equal capacity free of charge. No responsibility is assumed by Coil Company for refrigerant, labor, or freight to and from factory.

THIS WARRANTY IS EXPRESSLY IN LIEU OF ALL OTHER EXPRESS WARRANTIES. ALL IMPLIED WARRANTIES, INCLUDING WARRANTIES OF MERCHANTABILITY OR FITNESS FOR ANY PARTICULAR PURPOSE ARE LIMITED IN DURATION TO ONE (1) YEAR FROM EFFECTIVE DATE OF THIS WARRANTY. COIL COMPANY IS NOT LIABLE FOR CONSEQUENTIAL DAMAGES RESULTING FROM ANY DEFECT IN PART. THERE ARE NO OTHER OBLIGATIONS ON THE PART OF THE COIL COMPANY.

Warranty of Fitness

Coil Company does not provide a warranty of fitness since, in good faith Coil Company cannot anticipate or control the many different conditions under which the products of Coil Company may be used.

Coil Company Manufacturers:

- Space Coolers
- Air Handlers
- Coils



P.O. Box 956
Paoli, PA 19301
(800) 523-7590
FAX (610) 251-0805
www.coilcompany.com

YOU HAVE A DIRECT LINE TO US!