

Style W-2

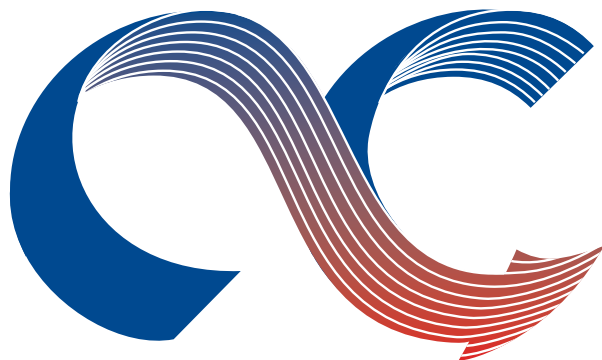
1/14

QUICKAIRE

Vertical Fan Coils
Utility/Closet

QUICK SHIPMENT

COIL COMPANY



HEAT EXCHANGE • AIR HANDLING

P.O. Box 956
Paoli, PA 19301
(800) 523-7590

FAX (610) 251-0805
www.coilcompany.com



YOU HAVE A DIRECT LINE TO US!

QUICKAIRE Fan/Coil Units

***Coil Company builds 8 sizes
of Vertical Direct Drive Fan/Coils
in both Chilled Water and DX.***

When it comes to building Fan/Coil Units for any application Coil Company has the capability to meet your requirements. We build units for almost any commercial application that you might run across. You need a unit next week and certainly can't wait 8 to 10 weeks for two or three small Fan/Coil units. Or maybe you have a cooling or heating emergency, or maybe the job just has to be completed by a certain time. In any case, you can't obtain the units that are required in a reasonable amount of time. Well now you can!

We offer quick shipments

Coil Company builds Vertical units in 8 sizes from 400 CFM to 2200 CFM. We offer (3) different shipment programs from 5 to 7 Work Days, 4 Week Shipments and 7-8 Week Shipments. You pay for the required shipping that you need. All units are built specifically for you and you order the options that you require.

Coil Company is responsive to small jobs

In an industry that treats Fan/Coil units as second class equipment, Coil Company builds quality Fan/Coil units, and that's 'saying something'! While everybody seems concerned with chillers, compressors, central station air handlers and major equipment on major jobs, Coil Company can meet your needs on small jobs or the large number of Fan/Coil units on large jobs. And quality is equally important at Coil Company so you can meet the most rugged conditions.

Our units are individually factory tested and inspected to insure the highest quality in the industry.



P.O. Box 956
Paoli, PA 19301
(800) 523-7590
FAX (610) 251-0805
www.coilcompany.com

TABLE OF CONTENTS

Section	Description	Page No.
Vertical Fan Coils	Description	4
	Features & Nomenclature	5
	Performance Data, Capacities & Sound Levels	6-12
	Dimensional Drawings	13-18
	Dimensions & Weights	19
	Guide Specifications	20-21
	Warranty	23

Coil Company reserves the right to change dimensional, construction, performance or any other criteria shown in this publication without notice to its customers.

Acceptance of orders. Purchase orders are subject to acceptance and approval by Coil Company (seller). No Terms or Conditions appearing on purchase orders of other related documents that are contrary to our Standard Terms and Conditions shall be binding unless specifically agreed to beforehand by the Seller in writing.

Cancellation of orders. The Purchaser can cancel or modify an order upon written notice and Purchaser shall

pay all costs (cancellation or modification) and charges as determined in an equitable way by seller.

Quotations. Any quotation in writing by Coil Company may or may not include freight charges within the quoted price(s). Regardless, all equipment is sent F.O.B. Factory and it is the Purchaser's responsibility to make claim for loss or damage with transportation (delivering) carrier.

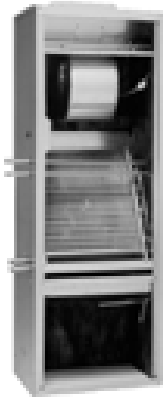
Warranty. See page 23.



P.O. Box 956
Paoli, PA 19301
(800) 523-7590
FAX (610) 251-0805
www.coilcompany.com

DESCRIPTION & FEATURES

Stock Vertical Fan Coils from Coil Company



**Front Return/Top Outlet
Basic Vertical
Direct Drive
in Water and DX**

Basic Vertical Model (BDVW-B & BDVX-B) is a high-static, ducted vertical cased fan coil with bottom return. It is primarily used in vertical floor-mounted or hideaway applications. Fan coil is furred into partition walls or hidden in closets, utility rooms and other concealed locations with a ducted discharge. A removable front access panel facilitates easy servicing of the coil, blower assembly, with quick-connect plug, and filter. A one-inch discharge duct flange is standard on top panel of each unit.



**Front Return/Top Outlet
Deluxe Vertical
Direct Drive
in Water and DX**

Deluxe Vertical Model (DDVW-B & DDVX-B) is primarily used in floor mounted or exposed applications. It is manufactured of cold-rolled steel, phosphate conversion-coated then finished in a soft-white, powder-coated epoxy that has been tested to 500 hours of salt spray test in accordance with ASTM B117.

**Front Return/Top Outlet
Basic Vertical
Direct Drive
in Water and DX**



Front Return with Top Supply Vertical Model (BDVW-R & BDVX-R) is a high-static, ducted vertical fan coil for installation in a closet-type enclosure. The front panel is removable for easy service access to the slide-out blower assembly, with quick-connect plug. Front return-air filter may be removed without removing front panel. Top-discharge opening has a one-inch duct collar. The Return-Air grille option allows unit to be furred in. Grille mounts to drywall for easy access without the expense of a closet door.

Vertical - 1 thru 5 1/2 TONS

Quick Shipped with Features and Options You Want.

VERTICAL FAN COIL STANDARD FEATURES

Coils – 1/2" OD copper tube with aluminum fins (12 FPI) equipped with manual-air vent. DX and steam coils do not include manual-air vent. Coils are 100% underwater pressure tested at 350 PSI with a 300 PSI working pressure.

Cabinet – Heavy-gauge galvanized steel with 1/2" thick, over three pound density, neoprene coated fiberglass.

Drain Pan – Galvanized drain pan is powder-coated epoxy and subjected to a 650-hour salt spray test in accordance with ASTM-B117. Also comes with 1/8" thick closed-cell insulation and primary and secondary drain connections.

Motors – All motors are 3-speed, 115V/1/60 PSC with quick-connect plug.

Blower – Easy slide-out, draw-through blower and motor assembly.

Controls – Controls and motors are factory-wired and terminated in a junction box for single-point power supply.

Air Openings – One-inch duct collar on supply-air openings.

Filter – One-inch fiberglass, throwaway filter.

Added Features – Protective cardboard covers openings during shipment and construction. Each unit is tagged and crated as scheduled for installation.

Certification – UL and cUL approved

OPTIONAL FEATURES*

Cabinet – Soft-white, powder-coated epoxy cabinet.

Drain Pans – Stainless steel, double-wall.

Coils – Copper fins, phenolic coated, stainless-steel end plates. All options are available on one to six rows.

Insulation – fiberglass, foil-faced, elastomeric and double-wall (solid or perforated) in 1/2" and 1" thickness.

Systems – Two or Four-pipe, Hydronic cooling/heating, Steam, Direct-expansion (DX) and/or Electric Heat.

Grilles – available as double-deflection; available in custom colors.

Controls – Wide selection of factory-mounted valves and controls.

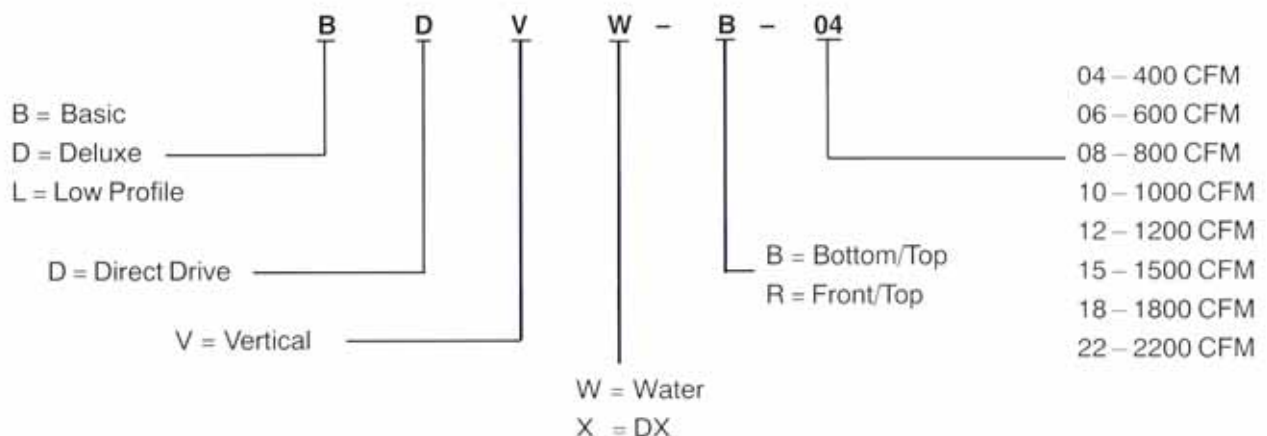
Filters – Two-inch thick throwaway, washable.

Flow-Control Pump – For water heating applications.

Electric Strip Heat – From .05 to 5 kW

*Not all options available on Quickship.

VERTICAL FAN COIL NOMENCLATURE



VERTICAL - 1 thru 5 1/2 TONS

AIR FLOW DATA

Air flow shown below is under dry coil conditions.

UNIT SIZE	EXTERNAL STATIC PRESSURE (INCHES H ₂ O)																			
	STYLE	COIL ROWS	0.00			0.05			0.10			0.15			0.20			0.25		
			HI	MED	LO	HI	MED	LO	HI	MED	LO	HI	MED	LO	HI	MED	LO	HI	MED	LO
04	STANDARD	3	545	440	355	525	425	350	510	415	340	500	405	325	490	395	310	480	380	295
		4	535	430	345	515	415	340	510	415	340	500	405	325	490	395	300	470	370	285
06	STANDARD	3	624	490	380	600	470	360	585	555	340	570	440	335	560	425	310	545	410	295
		4	614	480	370	590	460	350	575	545	330	560	430	315	550	415	300	535	400	285
	LOW PROFILE	3	765	650	560	735	635	550	715	620	540	695	605	525	675	585	510	655	565	495
		4	755	640	550	725	625	540	705	610	530	685	595	515	665	575	500	645	555	485
08	STANDARD	3	790	620	515	775	610	505	765	600	500	745	590	490	725	575	500	645	555	485
		4	775	605	500	765	595	490	750	585	485	730	575	480	710	560	470	690	545	450
	LOW PROFILE	3	985	875	685	970	845	675	950	825	660	925	805	645	900	785	630	875	765	615
		4	970	860	670	960	830	660	935	810	645	910	790	630	885	770	615	860	750	600
10	STANDARD	3	935	715	555	920	705	550	905	695	545	890	685	535	865	675	525	835	655	510
		4	920	700	540	905	690	535	890	680	530	875	670	520	850	660	510	820	640	495
	LOW PROFILE	3	1110	980	800	1075	950	785	1045	920	765	1010	895	745	975	865	725	940	835	700
		4	1095	965	785	1060	935	770	1030	910	750	1000	880	730	960	850	710	925	820	685
12	STANDARD	3	1145	935	715	1125	920	705	1095	905	695	1065	885	685	1030	865	675	1005	835	655
		4	1130	920	700	1110	905	690	1080	890	680	1050	870	670	1020	850	660	990	820	640
	LOW PROFILE	3	1370	1125	645	1330	1115	635	1295	1100	630	1255	1085	625	1215	1065	620	1185	1050	610
		4	1355	1110	630	1315	1100	625	1280	1085	615	1240	1070	610	1200	1055	605	1170	1040	595
15	STANDARD	3	CONTACT FACTORY																	
		4																		
	LOW PROFILE	3																		
		4																		
18	STANDARD	3	CONTACT FACTORY																	
		4																		
	LOW PROFILE	3																		
		4																		
22	STANDARD	3	CONTACT FACTORY																	
		4																		
	LOW PROFILE	3																		
		4																		

Note: Ratings and capacity tables based on nominal CFM.

VERTICAL - 1 thru 5 1/2 TONS

ARI APPROVED STANDARD RATINGS					COOLING CAPACITY		POWER INPUT (WATTS)
SIZE	STYLE	RATED CFM	GPM	WPD (FT./H ₂ O)	TOTAL COOLING (BTUH)	SENSIBLE COOLING (BTUH)	
04	STANDARD	530	3.2	2.1	15,930	11,690	175
	LOW PROFILE	550	2.9	4.3	14,260	11,040	228
06	STANDARD	600	3.5	2.4	17,540	13,130	181
	LOW PROFILE	750	3.5	6.4	17,460	14,410	260
08	STANDARD	760	4.2	3.1	20,820	17,190	316
	LOW PROFILE	960	4.8	3.5	24,080	19,570	360
10	STANDARD	900	4.9	4.6	24,650	20,290	356
	LOW PROFILE	1,060	5.7	5.3	28,480	23,560	383
12	STANDARD	970	5.2	5.0	25,990	21,580	413
	LOW PROFILE	1,310	7.8	8.8	39,100	30,780	540
15	STANDARD	1,616	10.0	5.1	49,865	40,095	529
	LOW PROFILE	1,550	9.7	7.9	48,624	37,500	553
18	STANDARD	1,898	12.4	7.0	62,141	48,454	736
	LOW PROFILE	1,898	13.0	10.9	65,009	49,559	736
22	STANDARD	2,075	14.4	8.8	71,879	54,529	1035
	LOW PROFILE	2,075	14.4	8.8	71,879	54,529	1035

NOTES: 1) Based on 80°F DB and 67°F WB EAT, 45°F EWT, 10°F temperature rise, high fan speed. Motor voltage 115/1/60 power source. Air flow under dry coil conditions. Water pressure drops shown in feet of water.

All units are listed under UL Category Control No. LZFE.

2) Ratings are based on actual CFM. Standard coils for 04 is 3 rows and 06-22 is 4 rows.

VERTICAL - 1 thru 5 1/2 TONS

HEATING PERFORMANCE

UNIT SIZE	SERIES/MODEL	COIL ROWS/(FPI)	RATED CFM	MBH	GPM	WPD (FT./H ₂ O)
04	BASIC/DELUXE	1 ROW / (12)	525	26.7	1.3	1.8
		2 ROWS / (12)	525	40.1	2.0	1.3
06	BASIC/DELUXE	1 ROW / (12)	610	33.6	1.7	2.9
		2 ROWS / (12)	610	49.9	2.5	2.1
	LOW PROFILE	1 ROW / (12)	750	37.8	1.9	3.3
		2 ROWS / (12)	750	57.3	2.8	2.4
08	BASIC/DELUXE	1 ROW / (12)	780	35.3	1.8	2.7
		2 ROWS / (12)	780	55.3	2.7	2.0
	LOW PROFILE	1 ROW / (12)	975	38.7	1.9	3.1
		2 ROWS / (12)	975	62.3	3.1	2.3
10	BASIC/DELUXE	1 ROW / (12)	930	36.4	1.8	3.3
		2 ROWS / (12)	930	59.1	2.9	2.5
	LOW PROFILE	1 ROW / (12)	1100	39.0	1.9	3.7
		2 ROWS / (12)	1100	64.4	3.2	2.8
12	BASIC/DELUXE	1 ROW / (12)	1135	43.2	2.2	4.9
		2 ROWS / (12)	1135	70.7	3.5	3.7
	LOW PROFILE	1 ROW / (12)	1350	38.5	1.9	0.7
		2 ROWS / (12)	1350	69.3	3.4	1.2
15	BASIC/DELUXE	1 ROW / (12)	1625	62.8	3.1	4.0
		2 ROWS / (12)	1625	100.9	5.0	3.4
	LOW PROFILE	1 ROW / (12)	1625	62.8	3.1	5.2
		2 ROWS / (12)	1625	103.7	5.2	5.4
18	BASIC/DELUXE	1 ROW / (12)	1910	75.5	3.8	5.4
		2 ROWS / (12)	1910	121.5	6.0	4.5
	LOW PROFILE	1 ROW / (12)	1910	54.2	2.6	0.9
		2 ROWS / (12)	1910	124.2	6.2	7.0
22	BASIC/DELUXE	1 ROW / (12)	2090	86.8	4.3	6.8
		2 ROWS / (12)	2090	138.8	6.9	5.7
	LOW PROFILE	1 ROW / (12)	2090	63.9	3.2	1.2
		2 ROWS / (12)	2090	138.8	6.9	5.7

NOTES: Based on 70°F DB EAT, 180°F EWT, 40°F temperature drop, high fan speed. Motor voltage 115/60 power source. Air flow under dry conditions. Water pressure drops shown in feet of water.

VERTICAL - 1 thru 5 1/2 TONS

COIL DATA

Coils are made from 1/2" O.D. copper tubing with .016" wall thickness, and tubes are staggered for maximum heat transfer. A manual air vent is standard on all hydronic coils. DX and steam coils do not include manual-air vent. All coils are 100% underwater pressure tested to 350 PSIG with a 300 PSIG working pressure. Steam coils are rated for up to 15 PSIG or 250°F.

Coils are available in two- or four-pipe, and from one- to eight-row configurations for Vertical Units. All units available with any combination of chilled or hot water, steam or direct expansion. Custom circuiting is available.

COIL ROWS	04	06	08	10	12	15	18	22
SINGLE ROW COIL	STANDARD							
TWO-ROW COIL								
THREE-ROW COIL								
FOUR-ROW COIL					OPTIONAL			
FIVE-ROW COIL								
SIX-ROW COIL				OPTIONAL				
SEVEN-ROW COIL								
* EIGHT-ROW COIL								

*Seven-row coil maximum when selecting a DX coil with hot water coil.

Coil Options:

- DX - Includes distributor and nozzle, TXV must be field furnished and installed
- Steam - 1-15 PSIG
- Opposite End Connection (E). Contact Factory when ordering.
- Preheat Coil Position (PREHEAT) - Standard coil is reheat position
- Phenolic Anti-Corrosion Coating (PAC)
- Stainless Steel Tubes/Fins/End Plates
- Copper Fins/Tubes/End Plates
- 6-16 Fins Per Inch (Standard is 12 FPI)

Coil connections on the chilled water side for 04-06 is 1/2" and 3/4" on 08-22. The hot water connection is 1/2" on 04-22.

VERTICAL - 1 thru 5 1/2 TONS

ELECTRIC HEAT

Electric heat may be furnished with either hydronic, direct expansion or steam coils and is factory mounted, wired, and tested. Option-equipped with low-watt density

(for long life) nichrome wire elements. The heater has a built-in, high limit, and fusible link to provide maximum safety.

SIZE	kW	1.0	1.5	2.0	2.5	3.0	3.5	4.0	4.5	5.0	5.5	6.0	6.5	7.0	7.5	8.0	8.5	9.0
	Voltage	AMPS																
04	115	8.7	13.0	17.4	21.7	26.1												
	208	4.8	7.2	9.6	12.0	14.4	16.8	19.2										
	230	4.4	6.5	8.7	10.9	13.0	15.2	17.4										
	277	3.6	5.4	7.2	9.0	10.8	12.6	14.4										
06	115	8.7	13.0	17.4	21.7	26.1												
	208	4.8	7.2	9.6	12.0	14.4	16.8	19.2	21.6	24.0								
	230	4.4	6.5	8.7	10.9	13.0	15.2	17.4	19.6	21.7								
	277	3.6	5.4	7.2	9.0	10.8	12.6	14.4	16.3	18.1								
08	115	8.7	13.0	17.4	21.7	26.1												
	208	4.8	7.2	9.6	12.0	14.4	16.8	19.2	21.6	24.0								
	230	4.4	6.5	8.7	10.9	13.0	15.2	17.4	19.6	21.7								
	277	3.6	5.4	7.2	9.0	10.8	12.6	14.4	16.3	18.1								
10	115	8.7	13.0	17.4	21.7	26.1												
	208	4.8	7.2	9.6	12.0	14.4	16.8	19.2	21.6	24.0	26.4	28.9	31.3	33.7	36.1	38.5		
	230	4.4	6.5	8.7	10.9	13.0	15.2	17.4	19.6	21.7	23.9	26.1	28.3	30.4	32.6	34.8		
	277	3.6	5.4	7.2	9.0	10.8	12.6	14.4	16.3	18.1	19.9	21.7	23.5	25.3	27.1	28.9		
12	115	8.7	13.0	17.4	21.7	26.1												
	208	4.8	7.2	9.6	12.0	14.4	16.8	19.2	21.6	24.0	26.4	28.9	31.3	33.7	36.1	38.5	40.9	43.3
	230	4.4	6.5	8.7	10.9	13.0	15.2	17.4	19.6	21.7	23.9	26.1	28.3	30.4	32.6	34.8	37.0	39.1
	277	3.6	5.4	7.2	9.0	10.8	12.6	14.4	16.3	18.1	19.9	21.7	23.5	25.3	27.1	28.9	30.7	32.5
15	115	8.7	13.0	17.4	21.7	26.1												
	208	4.8	7.2	9.6	12.0	14.4	16.8	19.2	21.6	24.0	26.4	28.9	31.3	33.7	36.1	38.5	40.9	43.3
	230	4.4	6.5	8.7	10.9	13.0	15.2	17.4	19.6	21.7	23.9	26.1	28.3	30.4	32.6	34.8	37.0	39.1
	277	3.6	5.4	7.2	9.0	10.8	12.6	14.4	16.3	18.1	19.9	21.7	23.5	25.3	27.1	28.9	30.7	32.5
18	115	8.7	13.0	17.4	21.7	26.1												
	208	4.8	7.2	9.6	12.0	14.4	16.8	19.2	21.6	24.0	26.4	28.9	31.3	33.7	36.1	38.5	40.9	43.3
	230	4.4	6.5	8.7	10.9	13.0	15.2	17.4	19.6	21.7	23.9	26.1	28.3	30.4	32.6	34.8	37.0	39.1
	277	3.6	5.4	7.2	9.0	10.8	12.6	14.4	16.3	18.1	19.9	21.7	23.5	25.3	27.1	28.9	30.7	32.5
22	115	8.7	13.0	17.4	21.7	26.1												
	208	4.8	7.2	9.6	12.0	14.4	16.8	19.2	21.6	24.0	26.4	28.9	31.3	33.7	36.1	38.5	40.9	43.3
	230	4.4	6.5	8.7	10.9	13.0	15.2	17.4	19.6	21.7	23.9	26.1	28.3	30.4	32.6	34.8	37.0	39.1
	277	3.6	5.4	7.2	9.0	10.8	12.6	14.4	16.3	18.1	19.9	21.7	23.5	25.3	27.1	28.9	30.7	32.5

VERTICAL - 1 thru 5 1/2 TONS

MOTOR DATA

Motors are wired to a junction box ready for single-point field connection. Outstanding features include:

- Quick-Connect Plug
- Permanent Split Capacitor
- Thermal overload protection
- 1050 RPM for lower operating costs
- Oversized bearings and permanently lubricated and sealed
- 122°F maximum operating temperature
- Custom motor mounts designed to reduce noise and eliminate vibration
- Stators are epoxy-dipped for more efficient motor cooling

Optional Motors

- 208V-1Ø-60 motors
- 277V-1Ø-60 motors
- 230/220V-1Ø-60 motors
- 50-Hz motors in specified voltages

60 HERTZ SINGLE-PHASE MOTORS (1100 RPM)				VOLTAGE / WATTS							
				115V		208V		230V		277V	
SIZE	MODEL / MOTOR TYPE	HP (QTY)	BLOWER-S	AMPS	WATTS	AMPS	WATTS	AMPS	WATTS	AMPS	WATTS
04	STANDARD / (STD)	1/10 (1)	1	1.5	175	0.80	175	0.7	175	0.5	175
	LOW PROFILE / (STD)	1/10 (1)	1	1.4	228	0.70	228	0.6	228	0.5	228
06	STANDARD / (STD)	1/10 (1)	1	1.6	181	0.90	181	0.8	181	0.8	181
	LOW PROFILE / (STD)	1/6 (1)	1	2.3	260	1.20	260	1.1	260	0.8	260
08	STANDARD / (STD)	1/6 (1)	1	2.2	316	1.10	316	1.0	316	1.3	316
	LOW PROFILE / (STD)	1/4 (1)	1	3.2	360	1.60	360	1.5	360	1.2	360
10	STANDARD / (STD)	1/6 (1)	1	2.4	356	1.20	356	1.1	356	1.5	356
	LOW PROFILE / (STD)	1/4 (1)	1	3.3	383	1.80	383	1.6	383	1.3	383
12	STANDARD / (STD)	1/4 (1)	1	3.2	413	1.70	413	1.5	413	1.7	413
	LOW PROFILE / (STD)	1/3 (1)	1	4.5	540	2.60	540	2.4	540	1.8	540
15	STANDARD / (STD)	1/6 (2)	2	4.6	547	2.30	547	2.1	547	1.6	547
	LOW PROFILE / (STD)	1/6 (2)	2	4.6	553	2.40	553	2.2	553	1.6	553
18	STANDARD / (STD)	1/4 (2)	2	6.4	644	3.30	644	3.0	644	2.4	644
	LOW PROFILE / (STD)	1/4 (2)	2	6.4	654	3.30	654	3.0	654	2.6	654
22	STANDARD / (STD)	1/3 (2)	2	9.0	793	5.30	793	4.8	793	3.6	793
	LOW PROFILE / (STD)	1/3 (2)	2	9.0	798	5.30	798	4.8	798	3.6	798

*Model 15-22, data reflects combined performance of (2) motors.

NOTES: Motor full load amps listed refer to NEC amps. Actual motor nameplate amps may vary.

VERTICAL - 1 thru 5 1/2 TONS

SOUND DATA

SIZE	MODEL	FAN SPEED	OCTAVE BAND						
			2	3	4	5	6	7	8
			CENTER FREQUENCY (CPS)						
			125	250	500	1000	2000	4000	8000
04	STANDARD	HIGH	58.1	51.8	48.6	44.5	36.3	32.5	30.8
		MEDIUM	54.5	39.5	38.1	33.6	27.3	24.3	26.3
		LOW	49.6	38.5	37.2	32.1	26.1	22.7	24.6
	LOW PROFILE	HIGH	CONTACT FACTORY						
		MEDIUM							
		LOW							
06	STANDARD	HIGH	59.5	50.1	49.1	43.2	38.1	34.7	35.1
		MEDIUM	56.3	47.3	44.6	38.8	33.4	32.0	33.4
		LOW	50.9	45.5	41.2	35.6	30.7	27.3	26.1
	LOW PROFILE	HIGH	59.2	52.1	51.6	46.4	41.4	36.0	33.6
		MEDIUM	53.6	49.3	47.7	41.5	35.5	33.8	26.0
		LOW	51.8	47.1	44.3	36.4	34.2	31.5	24.4
08	STANDARD	HIGH	62.1	56.6	53.3	48.3	44.2	40.8	36.5
		MEDIUM	56.6	48.2	45.7	41.6	38.2	32.9	29.7
		LOW	51.8	44.6	39.6	36.2	33.8	27.8	24.4
	LOW PROFILE	HIGH	60.1	57.0	55.7	53.0	49.7	45.0	37.0
		MEDIUM	56.7	52.3	47.0	45.4	41.2	34.2	27.8
		LOW	53.4	46.5	43.7	42.2	39.6	32.7	25.4
10	STANDARD	HIGH	63.2	56.9	57.3	53.1	47.3	41.8	39.8
		MEDIUM	58.1	51.7	53.8	48.3	42.4	37.2	31.7
		LOW	55.5	46.9	46.1	41.4	35.6	32.3	29.1
	LOW PROFILE	HIGH	61.2	59.8	57.2	56.0	52.1	47.1	39.1
		MEDIUM	57.2	54.1	52.2	49.3	42.1	38.9	27.3
		LOW	54.1	48.6	45.8	44.5	39.7	36.7	26.1
12	STANDARD	HIGH	65.3	61.4	60.1	56.5	49.9	45.1	43.1
		MEDIUM	60.4	55.9	54.2	52.1	44.7	41.1	35.4
		LOW	56.3	51.7	46.8	44.3	36.9	35.6	30.1
	LOW PROFILE	HIGH	62.5	61.3	59.8	57.8	54.7	47.6	40.8
		MEDIUM	58.8	57.2	54.1	50.3	44.1	38.6	28.7
		LOW	54.3	53.7	48.6	46.5	41.4	34.2	27.7
15	STANDARD	HIGH	CONTACT FACTORY						
		MEDIUM							
		LOW							
	LOW PROFILE	HIGH							
		MEDIUM							
		LOW							
18	STANDARD	HIGH	CONTACT FACTORY						
		MEDIUM							
		LOW							
	LOW PROFILE	HIGH							
		MEDIUM							
		LOW							
22	STANDARD	HIGH	CONTACT FACTORY						
		MEDIUM							
		LOW							
	LOW PROFILE	HIGH							
		MEDIUM							
		LOW							

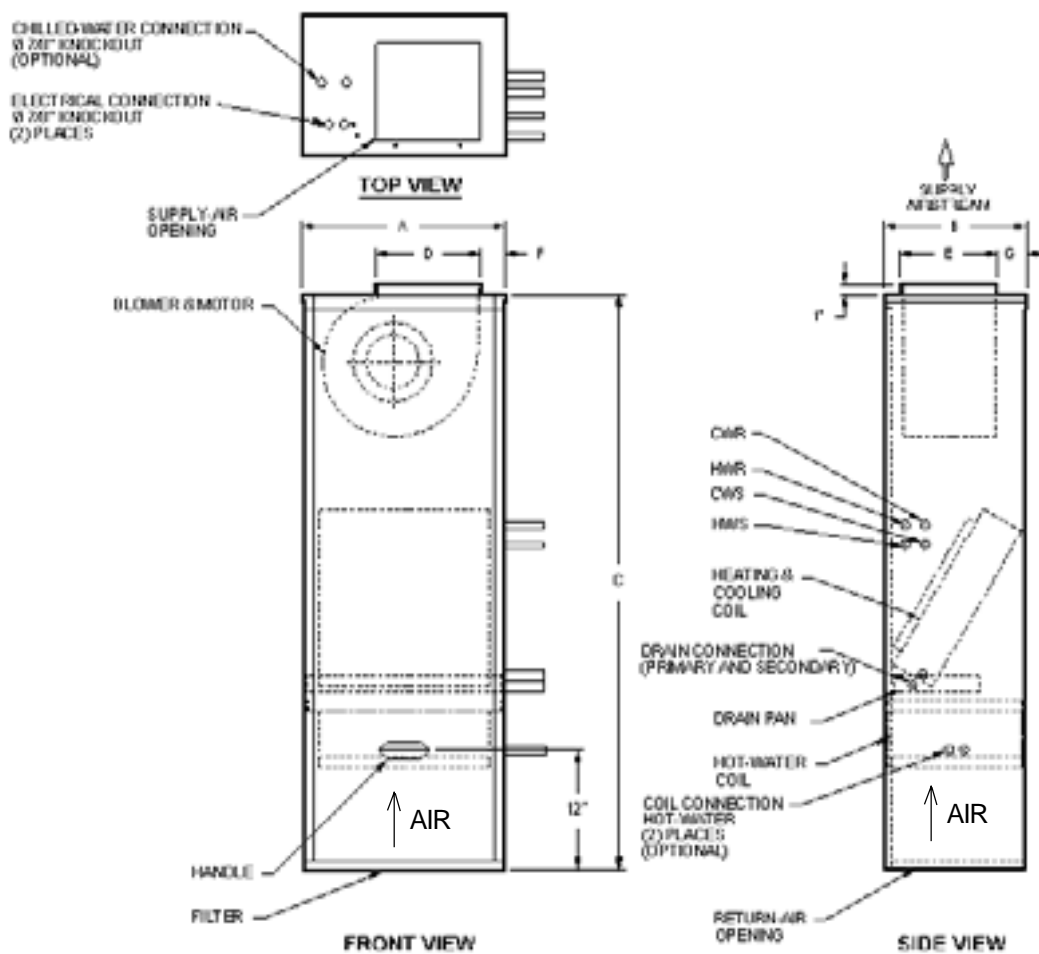
NOTES: 1) Power levels are in dB RE 10-12 watts.

2) Sound data tested in accordance with ASHRE Standard 68.

3) Air Flow under dry coil conditions.

VERTICAL - 1 thru 2 TONS

STANDARD CASED VERTICAL BASIC & DELUXE - BOTTOM RETURN - 400-800 CFM
BDVW-B (WATER) - BDVX-B (DX) OR DDVW-B (WATER) - DDVX-B (DX)



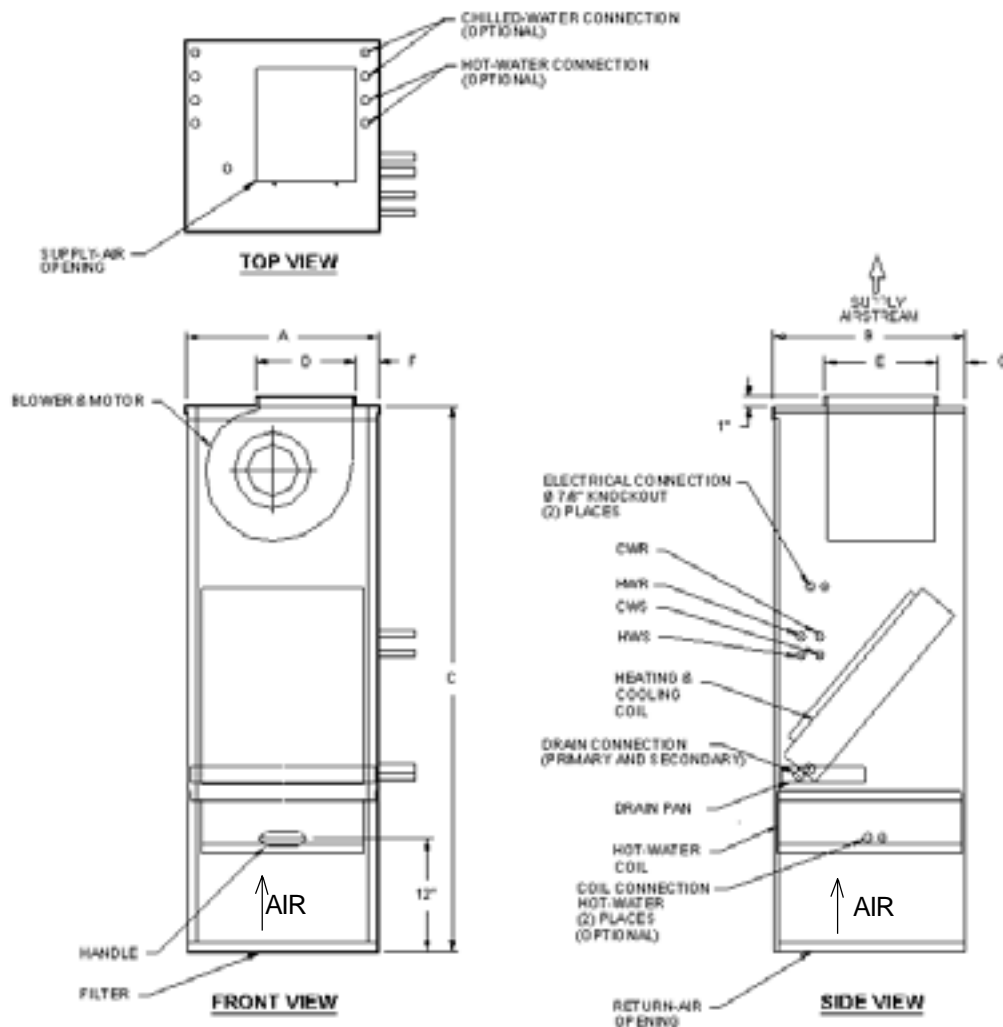
STANDARD MODEL	A	B	C	D	E	F	G	FILTER SIZE
04	20 5/32	14 5/32	57 5/8	10 15/32	7 3/32	2 7/8	3 1/32	16x16x1
06	20 5/32	14 5/32	57 5/8	10 15/32	8 15/32	2 7/8	3 1/32	16x20x1
08	20 5/32	14 5/32	57 5/8	10 15/32	9 13/32	2 7/8	3 1/32	20x20x1

Standard Models 04 thru 08.

- All sizes shown in inches
- Right-hand unit shown, left-hand unit opposite.
- Coil connections determined by facing the supply-air opening.
- Electrical junction box is located on the same side as the coil connections.
- Unit must be installed level and condensate drain lines should be trapped.
- Drain pan is powder-coated epoxy with a 1/8" thick closed-cell insulation and has 3/4" NPT primary and secondary drain connections.
- Entire cabinet, scroll and blower wheel are heavy-gauge, galvanized steel.
- Coil connections: 1/2" CW and HW on sizes 04-08.

VERTICAL - 2 1/2 thru 5 1/2 TONS

STANDARD CASED VERTICAL BASIC & DELUXE - BOTTOM RETURN - 1000-2200 CFM
BDVW-B (WATER) - BDVX-B (DX) OR DDVW-B (WATER) - DDVX-B (DX)



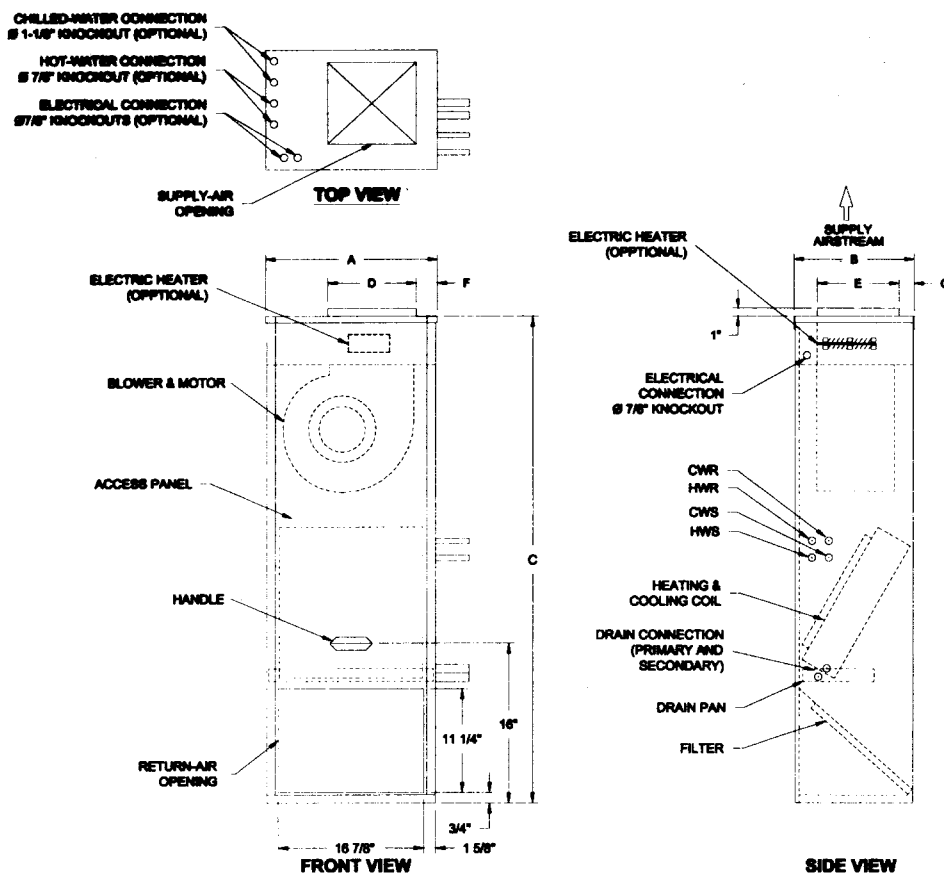
STANDARD MODEL	A	B	C	D	E	F	G	FILTER SIZE
10	20 11/32	20 5/16	57 5/8	10 3/8	11 15/16	2 1/8	3 1/16	20x20x1
12	20 11/32	20 5/16	57 5/8	10 3/8	11 15/16	2 1/8	3 1/16	20x20x1
15	36	24 5/8	62 3/4	24	10 1/2	3	3	30x24x1
18	36	24 5/8	62 3/4	24	10 1/2	3	3	30x24x1
22	36	24 5/8	62 3/4	24	10 1/2	3	3	30x24x1

Standard Models 10 thru 22.

- All sizes shown in inches
- Right-hand unit shown, left-hand unit opposite.
- Coil connections determined by facing the supply-air opening.
- Electrical junction box is located on the same side as the coil connections.
- Unit must be installed level and condensate drain lines should be trapped.
- Drain pan is powder-coated epoxy with a 1/8" thick closed-cell insulation and has 3/4" NPT primary and secondary drain connections.
- Entire cabinet, scroll and blower wheel are heavy-gauge, galvanized steel.
- Coil connections: 1/2" CW on size 10; 3/4" on sizes 12-22 and 1/2" HW on sizes 10-22.

VERTICAL - 1 thru 2 TONS

STANDARD CASED VERTICAL BASIC & DELUXE - FRONT RETURN - 400-800 CFM
BDVW-R (WATER) - BDVX-R (DX) OR DDVW-R (WATER) - DDVX-R (DX)



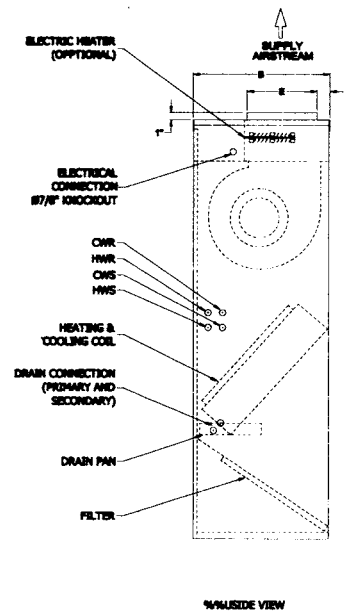
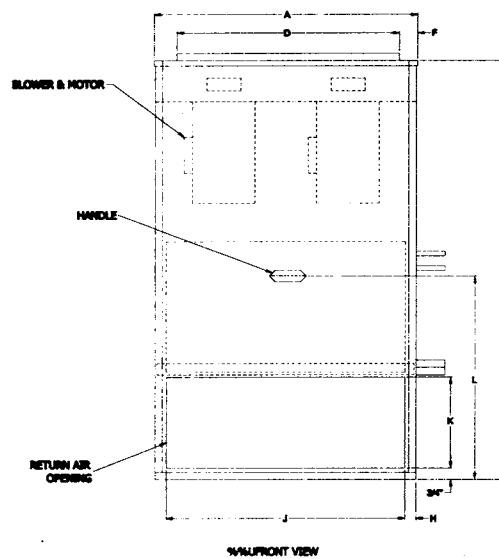
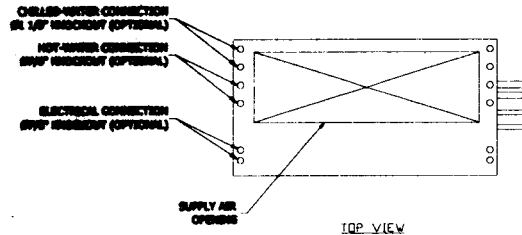
MODEL	A	B	C	D	E	F	G	FILTER SIZE
04	20 5/32	14 5/32	57 5/8	10 15/32	7 3/32	2 7/32	3 1/32	16x16x1
06	20 5/32	14 5/32	57 5/8	10 15/32	8 15/32	2 7/32	3 1/32	16x20x1
08	20 5/32	14 5/32	57 5/8	10 15/32	9 13/32	2 7/32	3 1/32	20x20x1

Standard Cased Models 04 thru 08.

- All sizes shown in inches
- Right-hand unit shown, left-hand unit opposite.
- Coil connections determined by facing the supply-air opening.
- Electrical junction box is located on the same side as the coil connections.
- Unit must be installed level and condensate drain lines should be trapped.
- Drain pan is powder-coated epoxy with a 1/8" thick closed-cell insulation and has 3/4" NPT primary and secondary drain connections.
- Entire cabinet, scroll and blower wheel are heavy-gauge, galvanized steel.
- Coil connections: 1/2" CW and HW on sizes 04-08.

VERTICAL - 2 1/2 thru 5 1/2 TONS

STANDARD CASED VERTICAL BASIC & DELUXE - FRONT RETURN - 1000-2200 CFM
BDVW-R (WATER) - BDVX-R (DX) OR DDVW-R (WATER) - DDVX-R (DX)



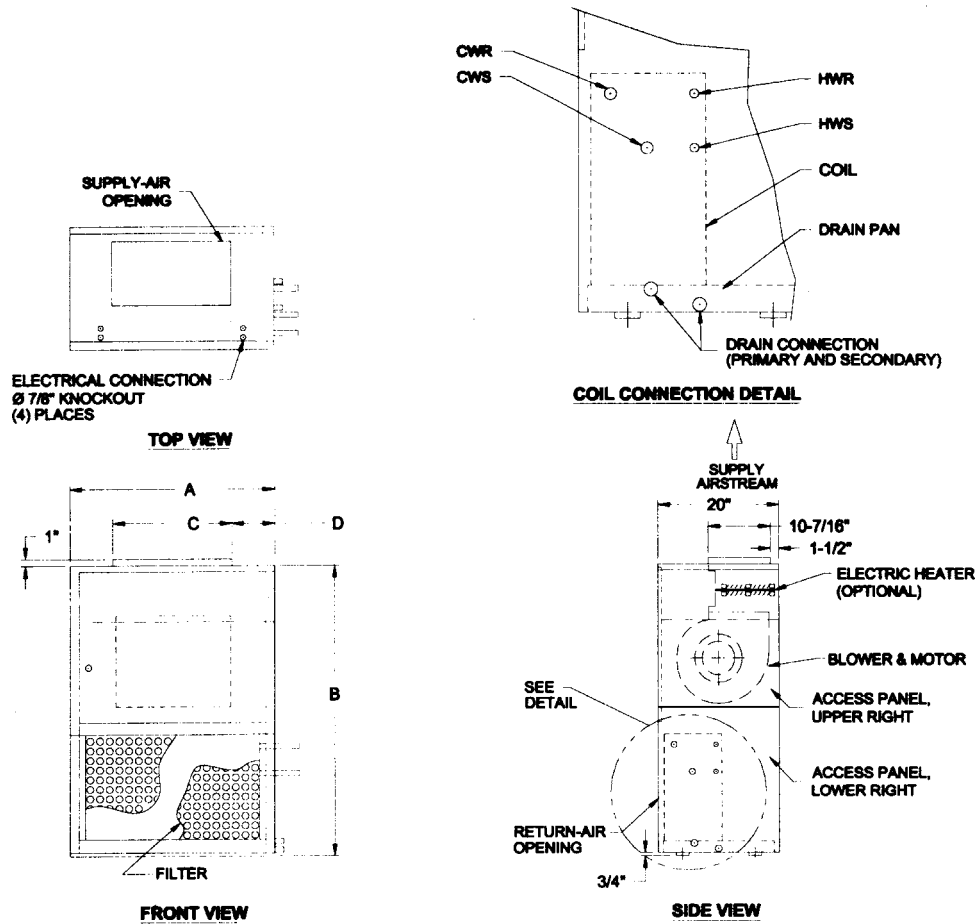
MODEL	A	B	C	D	E	F	G	FILTER SIZE
10	20 11/32	20 5/16	57 5/8	10 3/8	11 15/16	2 1/8	3 1/16	20x20x1
12	20 11/32	20 5/16	57 5/8	10 3/8	11 15/16	2 1/8	3 1/16	20x20x1
15	36	24 5/8	62 3/4	24	10 1/2	3	3	30x24x1
18	36	24 5/8	62 3/4	24	10 1/2	3	3	30x24x1
22	36	24 5/8	62 3/4	24	10 1/2	3	3	30x24x1

Standard Cased Models 10 thru 22.

- All sizes shown in inches
- Right-hand unit shown, left-hand unit opposite.
- Coil connections determined by facing the supply-air opening.
- Electrical junction box is located on the same side as the coil connections.
- Unit must be installed level and condensate drain lines should be trapped.
- Drain pan is powder-coated epoxy with a 1/8" thick closed-cell insulation and has 3/4" NPT primary and secondary drain connections.
- Entire cabinet, scroll and blower wheel are heavy-gauge, galvanized steel.
- Coil connections: 1/2" CW on size 10; 3/4" on sizes 12-22 and 1/2" HW on sizes 10-22.

VERTICAL - 1 1/2 thru 3 TONS

LOW PROFILE CASED VERTICAL FRONT RETURN/TOP SUPPLY - 600-1200 CFM - LDVW-R (WATER) - LDVX-R (DX)



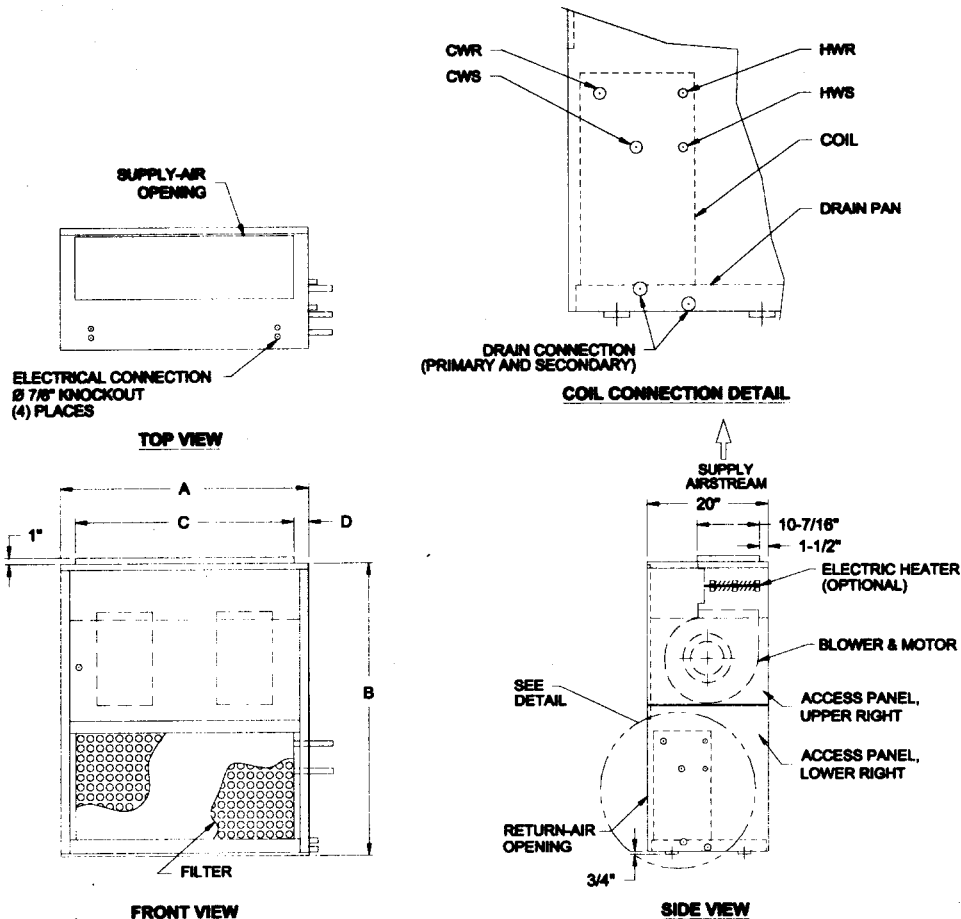
MODEL	A	B	C	D	FILTER SIZE
06	21	42	12 1/4	4 3/8	16X16X1
08	25	42	12 1/4	6 3/8	16X20X1
10	25	45	12 1/4	6 3/8	20X20X1
12	30	45	12 1/4	8 7/8	20X25X1

Low Profile Cased Models with Front Return/Top Supply 06 thru 12.

- All sizes shown in inches
- Right-hand unit shown, left-hand unit opposite.
- Coil connections determined by facing the supply-air opening.
- Electrical junction box is located on the same side as the coil connections.
- Unit must be installed level and condensate drain lines should be trapped.
- Drain pan is powder-coated epoxy with a 1/8" thick closed-cell insulation and has 3/4" NPT primary and secondary drain connections.
- Entire cabinet, scroll and blower wheel are heavy-gauge, galvanized steel.
- Coil connections: 1/2" CW on size 06; 3/4" on sizes 08-12 chilled water and 1/2" HW on sizes 06-12 hot water.

VERTICAL - 4 thru 5 1/2 TONS

LOW PROFILE CASED VERTICAL FRONT RETURN/TOP SUPPLY - 1500-2200 CFM - LDVW-R (WATER) - LDVX-R (DX)



MODEL	A	B	C	D	FILTER SIZE
15	37	48	25 1/4	5 7/8	25x25x1
18	37	48	32 1/4	2 3/8	(2)25x16x1
22	41	48	36 1/4	2 3/8	(2) 25x20x1

Low Profile Cased Models with Front Return/Top Supply 15 thru 22.

- All sizes shown in inches
- Right-hand unit shown, left-hand unit opposite.
- Coil connections determined by facing the supply-air opening.
- Electrical junction box is located on the same side as the coil connections.
- Unit must be installed level and condensate drain lines should be trapped.
- Drain pan is powder-coated epoxy with a 1/8" thick closed-cell insulation and has 3/4" NPT primary and secondary drain connections.
- Entire cabinet, scroll and blower wheel are heavy-gauge, galvanized steel.
- Coil connections: 3/4" CW on sizes 15-22 chilled water; 3/4" and 1/2" HW on sizes 15-22 hot water.

VERTICAL - 1 thru 5 1/2 TONS

VERTICAL UNITS

UNIT	MODEL	ROWS	DIMENSIONS/INCHES			WEIGHT/LBS.		DIMENSIONS/MILLIMETERS			WEIGHT/kg	
			HEIGHT	WIDTH	DEPTH	DRY	WET	HEIGHT	WIDTH	DEPTH	DRY	WET
STANDARD BASIC/DELUXE BOTTOM/ FRONT RETURN	04	3	59	21	15	104	109	1499	533	381	47	50
		4	59	21	15	109	116	1499	533	381	49	53
	06	3	59	21	15	110	115	1499	533	381	50	52
		4	59	21	15	116	122	1499	533	381	52	55
	08	3	59	21	15	142	147	1499	533	381	64	67
		4	59	21	15	147	154	1499	533	381	67	70
	10	3	59	21	21	151	156	1499	533	533	58	71
		4	59	21	21	156	167	1499	533	533	71	74
	12	3	59	21	21	167	172	1499	533	533	76	78
		4	59	21	21	172	179	1499	533	533	78	81
	15	3	59	22	30	224	234	1499	559	762	102	106
		4	59	22	30	230	243	1499	559	762	104	110
	18	3	59	22	30	234	244	1499	559	762	106	111
		4	59	22	30	240	253	1499	559	762	109	115
	22	3	59	22	30	234	244	1499	559	762	106	111
		4	59	22	30	240	253	1499	559	762	109	115

UNIT	MODEL	ROWS	DIMENSIONS/INCHES			WEIGHT/LBS.		DIMENSIONS/MILLIMETERS			WEIGHT/kg	
			HEIGHT	WIDTH	DEPTH	DRY	WET	HEIGHT	WIDTH	DEPTH	DRY	WET
LOW PROFILE FRONT RETURN	04	3	43	21	15	116	121	1092	533	508	53	55
		4	43	21	15	121	128	1092	533	508	55	58
	06	3	43	21	15	116	121	1092	533	508	53	55
		4	43	21	15	121	128	1092	533	508	55	58
	08	3	43	25	15	131	136	1092	635	508	59	62
		4	43	25	15	136	143	1092	635	508	62	65
	10	3	46	25	21	141	146	1092	635	508	64	66
		4	46	25	21	146	153	1168	635	508	66	70
	12	3	46	30	21	152	157	1168	762	508	69	71
		4	46	30	21	157	164	1168	762	508	71	75
	15	3	49	37	30	202	212	1245	940	508	92	96
		4	49	37	30	208	221	1245	940	508	94	100
	18	3	49	37	30	213	223	1245	940	508	97	101
		4	49	37	30	219	232	1245	940	508	99	105
	22	3	49	41	30	230	240	1245	1041	508	104	109
		4	49	41	30	236	249	1245	1041	508	107	113

VERTICAL - 1 thru 5 1/2 TONS

GENERAL

Furnish and install Coil Company Vertical Direct Drive Fan Coil Units as indicated on the plans and in the specifications. Units shall be completely factory-assembled, tested and shipped as one piece. All units shall be capable of meeting or exceeding the scheduled capacities for cooling, heating and air delivery. All unit dimensions for each model and size shall be considered maximums. Units shall be UL listed and also in compliance with UL/ANSI Standard 1995.

CONSTRUCTION

All unit chassis shall be fabricated of heavy gauge galvanized steel panels able to meet 125-hour salt spray test per ASTM B-117. All exterior panels shall be insulated with 1/2" thick, 3.35 pound per cubic foot, dual density fiberglass insulation rated for a maximum air velocity of 3600 f.p.m. Insulation shall conform to UL 181 for erosion and NFPA 90A and 90B for flame spread (25) and smoke developed (50) rating per ASTM E-84 and UL 723 and CAN./ULC, S102-M88.

All exposed units shall have exterior panels fabricated of not less than 18-gauge galvanized steel. The front panel of recessed units shall be attached with quarter-turn quick open fasteners to allow for easy removal and access for service.

OPTION: Provide a 16-gauge front panel on exposed units

Slope Top and recessed units shall include a recessed stamped louver discharge grille.

OPTION: Provide an architectural grade single deflection discharge grille with a powder-coated paint finish to match cabinet color.

OPTION: Provide an architectural grade bar discharge grille with a powder-coated paint finish to match cabinet color.

OPTION: Provide foil-faced insulation in lieu of standard. Foil insulation shall meet or exceed the requirements stated above, and in addition, meet ASTM Standards C665 and C-1136 for biological growth in insulation. Insulation shall be lined with aluminum foil, fiberglass scrim reinforcement, and 30-pound kraft paper laminated together with a flame resistant adhesive. All exposed edges shall be sealed to prevent any fibers from reaching the air stream.

OPTION: Provide Elastometric Closed Cell Foam Insulation in lieu of standard. Insulation shall conform to UL 181 for erosion and NFPA 90A for fire, smoke and melting, and comply with a 25/50 Flame Spread and Smoke Developed Index per ASTM E-84 or UL 723. Additionally, insulation shall comply with Anti-microbial

Performance Rating of zero, no observed growth, per ASTM G21. Polyethylene insulation is not acceptable.

Unit mounting shall be to the wall through 1/2" holes in four locations in the back of the unit.

PAINTED FINISH

All exposed cabinet exterior panels shall be provided with soft-white powder-coated epoxy finish and subjected to a 1500-hour salt spray test in accordance with ASTM B117.

SOUND

Units shall have published sound power level data tested in accordance with ARI Standard 350-2000 (non-ducted equipment) and ARI Standard 260-2001 (ducted equipment).

FAN ASSEMBLY

Unit fan shall be dynamically balanced, forwardly curved, DWDI centrifugal type constructed of heavy gauge zinc coated galvanized steel for corrosion resistance. Motors shall be high efficiency, permanently lubricated sleeve bearing, permanent split-capacitor type with UL and C-UL listed automatic reset thermal overload protection and three separate horsepower taps. Single speed motors are not acceptable.

The fan assembly shall be easily removable for servicing the motor and blower at or away from the unit. The entire fan assembly shall be able to come out of the unit by removing two wing nuts and unplugging the motor.

Plenum unit fan assemblies shall be easily serviced through an access panel provided.

OPTION: Devices used to energize and de-energize (switch) fan speeds must be totally silent. Mercury and/or quiet relays and/or contactors are not acceptable.

COILS

All cooling and heating coils shall optimize rows and fins per inch to meet the specified capacity. Coils shall have seamless copper tubes and shall be mechanically expanded to provide an efficient, permanent bond between the tube and fin. Fins shall have high efficiency aluminum surface optimized for heat transfer, air pressure drop and carryover.

All coils shall be hydrostatically tested at 350 PSIG air pressure under water, and rated for a maximum of 300 PSIG working pressure at 200°F maximum water temperature. Direct expansion cooling coils shall include a fixed orifice distributor and nozzle.

Steam coils shall be standard steam type suitable for temperatures above 35°F and 15 PSIG maximum working pressure.

VERTICAL - 1 thru 5 1/2 TONS

OPTION: Coil casing shall be fabricated from 304 Stainless Steel. All coils shall be provided with a manual-air vent fitting to allow for coil venting.

OPTION: Provide automatic air vents in lieu of manual-air vents.

Cooling and heating coils shall be in the common coil casing, heating coils shall be furnished in the re-heat or pre-heat position on the unit with chilled water coils, and DX heating coil shall be in pre-heat position only.

DRAIN PANS

Primary condensate drain pans shall be single wall, heavy gauge, powder-coated epoxy subjected to a 650-hour salt spray test in accordance with ASTM B117, and shall extend under the entire cooling coil. Drain pans shall be of one-piece construction and be positively sloped for condensate removal. Drain pans shall have primary and secondary drain connections.

The drain pan shall be externally insulated with a closed cell foam insulation. The insulation shall carry no more than a 25/50 Flame Spread and Smoke Developed Rating per ASTM E-84 and UL 723 and fungi resistant per ASTM G21/C1338, bacteria resistant per ASTM G22 and mold growth per UL 181.

OPTION: Provide a single wall primary drain pan constructed entirely of heavy gauge type 304 stainless steel for superior corrosion resistance. Stainless steel drain pans shall be externally insulated and meet or exceed the requirements stated above.

Provide a secondary drain connection on the primary drain pan for condensate overflow.

OPTION: Provide a condensate overflow switch in the primary drain pan for condensate overflow.

FILTERS

All plenum and exposed units shall be furnished with a minimum 1" nominal glass fiber throwaway filter. Filters shall be tight fitting to prevent air bypass. Plenum and exposed unit filters shall be easily removable from the bottom or rear of the unit without the need for tools.

OPTION: Provide unit with 1" pleated filters rated at 25-30% efficiency and MERV 6 based ASHRAE 52.2 - 1999.

ELECTRIC HEAT

Furnish an electric resistance heating assembly as an integral part of the fan coil unit, with the heating capacity, voltage and kilowatts scheduled. The heater assembly shall be designed and rated for installation on the fan coil unit without the use of duct extensions or transitions, and be located in the unit as to not expose the fan assembly to excessive leaving air temperatures that could affect motor performance.

The heater and unit assembly shall be listed for zero clearance and meet all NEC requirements, and be UL listed with the unit as an assembly in compliance with UL/ANSI Standard 1995.

All heating elements shall be open coil type Nichrome wire mounted in ceramic insulators and located in an insulated heavy gauge galvanized steel housing. All elements shall terminate in a machine staked stainless steel terminal secured with stainless steel hardware for corrosion resistance. The element support brackets shall be spaced no greater than 3 1/2" on center. All internal wiring shall be rated for 105°C minimum.

All heaters shall include over temperature protection consisting of an automatic reset primary thermal limit and back up secondary thermal limit. All heaters shall be single stage.

An incoming line power distribution block shall be provided and designated to accept single point power wiring capable of carrying 125% of the calculated load current.

OPTION: Devices used to energize and de-energize (switch) electric heat must be totally silent. Mercury and/or quiet relays and/or contactors are not acceptable.

PIPING PACKAGES

Provide a factory assembled valve piping package to consist of a 2 or 3 way, on/off, motorized electric control valve and two ball isolation valves. Control valves are piped normally closed to the coil. Maximum entering water temperature on the control valve is 180°F, and maximum close-off pressure is 75 PSIG (1/2") or 50 PSIG (3/4"). Maximum operating pressure shall be 300 PSIG.

OPTION: Provide 3-wire floating point modulating control valve in lieu of 2-position control valve with factory assembled valve piping package.

OPTION: Provide either a fixed or adjustable flow control device for each piping package.

OPTION: Provide pressure-temperature ports for each piping package.

Piping packages are shipped installed on all units and can be shipped separately by request only.

VERTICAL - 1 thru 5 1/2 TONS

VERTICAL - 1 thru 5 1/2 TONS

WARRANTY

COIL COMPANY WARRANTS TO THE ORIGINAL OWNER/USER OF THE COIL COMPANY UNIT IDENTIFIED ABOVE TO BE FREE OF ORIGINAL DEFECTS IN MATERIAL OR WORKMANSHIP FOR A PERIOD OF ONE YEAR FROM THE EFFECTIVE DATE OF THIS WARRANTY.

The Warranty extends for twelve (12) months from date of start-up, but no longer than eighteen (18) months from the date of shipment. The warranty does not include the filter.

This Warranty on the units obligates Coil Company to repair or replace, free of charge, any part or parts that show evidence of being defective in material and workmanship and are deemed so defective by personnel of Coil Company. The part must be returned for replacement with the proper information as required.

Coil Company assumes no obligation for labor required to replace the defective part or parts nor the freight or postage required to return or to secure the part which shall be at the cost and expense of the Original Owner/User. Warranty does not include breakage or rupture of water tubing and/or water condenser coil when subjected to freezing temperatures.

Coil Company, will replace the defective part or parts within 21 days after the return to the Coil Company of such defective part or parts provided notice of such defect was given by Original Owner/User within the Warranty period.

An optional, additional four-year protection plan on the compressor is available at modest cost at the time of original unit sale only. This obligates Coil Company to replace f.o.b. factory, a defective compressor with a comparable compressor of equal capacity free of charge. No responsibility is assumed by Coil Company for refrigerant, labor, or freight to and from factory.

THIS WARRANTY IS EXPRESSLY IN LIEU OF ALL OTHER EXPRESS WARRANTIES. ALL IMPLIED WARRANTIES, INCLUDING WARRANTIES OF MERCHANTABILITY OR FITNESS FOR ANY PARTICULAR PURPOSE ARE LIMITED IN DURATION TO ONE (1) YEAR FROM EFFECTIVE DATE OF THIS WARRANTY. COIL COMPANY IS NOT LIABLE FOR CONSEQUENTIAL DAMAGES RESULTING FROM ANY DEFECT IN PART. THERE ARE NO OTHER OBLIGATIONS ON THE PART OF THE COIL COMPANY.

Warranty of Fitness

Coil Company does not provide a warranty of fitness since, in good faith Coil Company cannot anticipate or control the many different conditions under which the products of Coil Company may be used.

Coil Company Manufacturers:

- Fan Coil Units
- Air Handlers
- Coils



P.O. Box 956
Paoli, PA 19301
(800) 523-7590
FAX (610) 251-0805
www.coilcompany.com

YOU HAVE A DIRECT LINE TO US!